

The image shows a bright, empty room with light-colored walls and a grey wood-grain floor. A large window on the left side offers a view of a residential street with a white car parked. A brick fireplace with a grey insert is located on the right wall. A three-bulb chandelier hangs from the ceiling. The room is presented as a clean, ready-to-move-in space.

Shelthorpe Road
Loughborough

3 Bed Terraced House • LE11 2PF • £1,050 pcm • £1,200 Deposit



Shelthorpe Road, Loughborough

Now available to let, a sizeable, three bedroom, terraced house set in Loughborough. This property comes with a large lounge, kitchen, sun room, three double bedrooms and shower room. This property boasts a large garden to the rear with driveway parking to the front. All photos and video tour are of actual property.

Lounge

A large and bright living room set on the ground floor, French doors give access to the sun room. An open space under the staircase is ideal for storage.

Sun Room

Overlooking the rear garden, a sun room accessed via the lounge. French doors give access to the garden.

Kitchen

A spacious L-shaped kitchen, that could also be used as a diner. This kitchen comes with an additional storage room. This room also includes a cooker and hob, with space for other appliances.

Master Bedroom

The largest of the three bedrooms, spans the full depth of the property.

Bedroom Two

A second double bedroom on the first floor, overlooking Shelthorpe Road.

Bedroom Three

A third double bedroom on the first floor, overlooking the rear garden.

Shower Room

Located on the first floor, a modern wash room, including a walk-in-shower, sink and toilet.

Garden

A large garden situated at the rear of the property. PLEASE NOTE: the garden will be cleared and fences repaired.

Parking

Driveway parking at the front of this property. PLEASE NOTE: this space will be cleared.

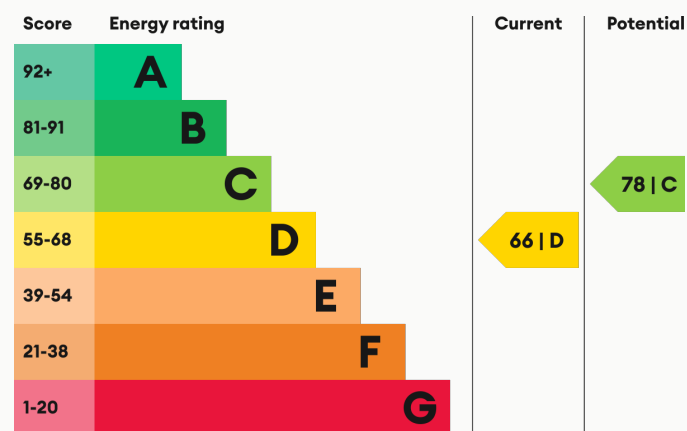
Heating

Gas-fired central heating.

Glazing

Modern, good quality, uPVC double glazing.

Energy Performance



We aim to make our particulars both accurate and reliable. However they are not guaranteed; nor do they form part of an offer or contract. If you require clarification on any points then please contact us, especially if you are traveling some distance to view. All measurements are to widest point.



Lounge



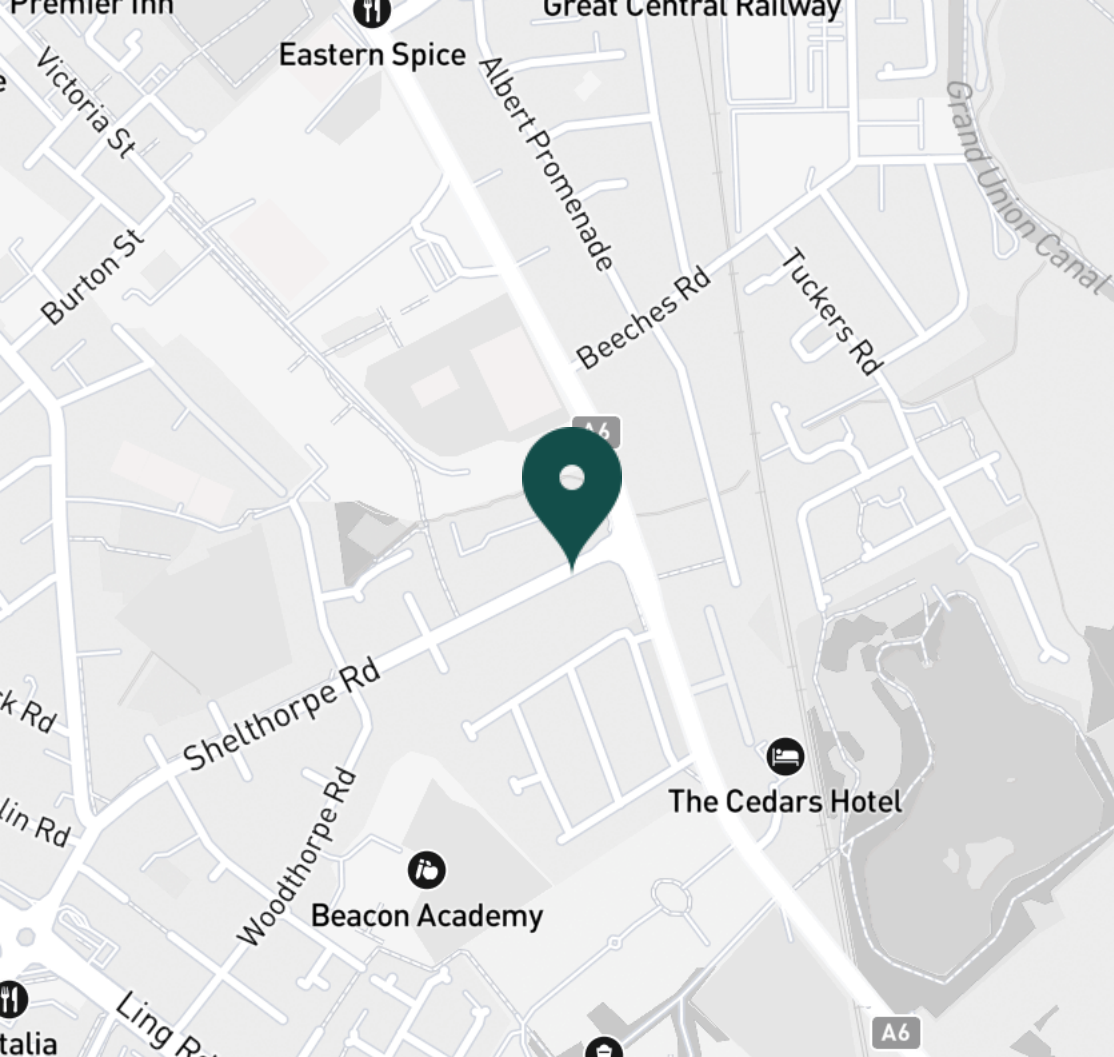
Lounge



Kitchen



Kitchen



SUPERMARKETS

Tesco Extra Loughborough	0.7 mi
Marks & Spencer	1.0 mi
Sainsburys Loughborough	1.1 mi
Tesco Superstore Loughborough	1.3 mi
Lidl Loughborough	1.5 mi

GYMS

NPC Performance Centre	0.6 mi
Dynamite Gym Ltd	0.7 mi
Fit4Less	0.9 mi
PureGym Loughborough	1.0 mi
Anytime Fitness Loughborough	1.2 mi

TRAIN STATIONS

Loughborough	1.5 mi
Barrow upon Soar	2.9 mi
Sileby	4.8 mi
Syston	9.7 mi
South Wigston	10.0 mi

NURSERY SCHOOLS

Shelthorpe Childrens Centre	0.3 mi
Lime Tree Nursery	0.5 mi
Parkside PS	0.5 mi
Westwards Nursery	0.8 mi
Small World Nursery	1.0 mi

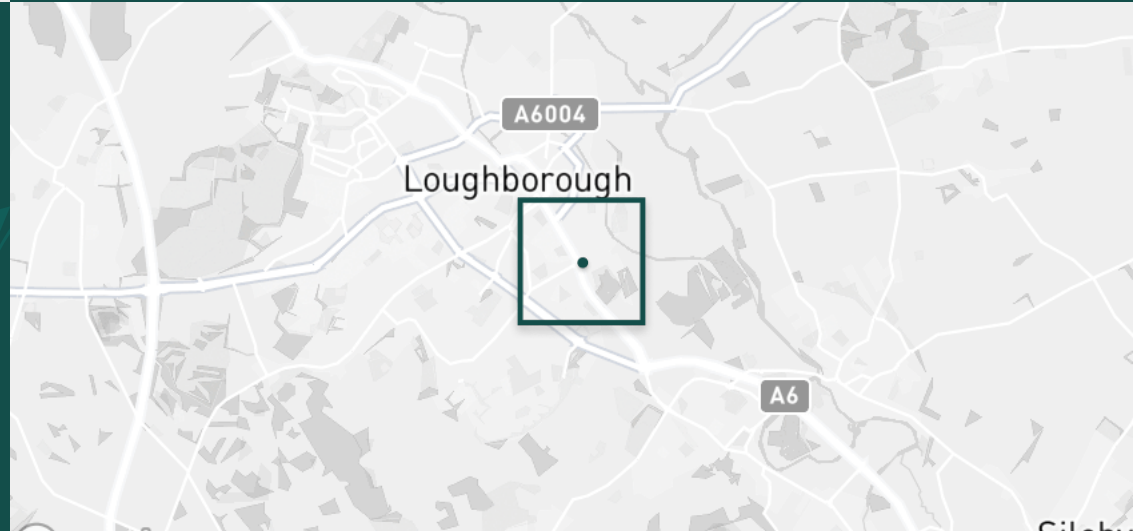
PRIMARY SCHOOLS

Beacon Primary Academy	0.3 mi
Loughborough Grammar Sch	0.5 mi
Fairfield Preparatory Sch	0.5 mi
Loughborough High Sch	0.5 mi
Our Lady's Convent Sch	0.8 mi

HIGH SCHOOLS

Loughborough Grammar Sch	0.5 mi
Loughborough High Sch	0.5 mi
Our Lady's Convent Sch	0.8 mi
Limehurst Academy	1.2 mi
Woodbrook Vale	1.4 mi

Discover
Loughborough



- ✓ Available Now
- ✓ Loughborough
- ✓ Three Double Bedrooms
- ✓ New Carpets
- ✓ Large Receptions
- ✓ Large Garden





Kitchen



Sun Room



Sun Room



Sun Room



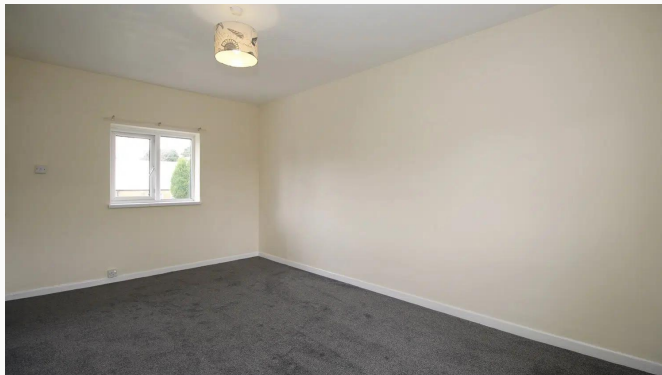
Master Bedroom



Master Bedroom



Master Bedroom



Master Bedroom



Bedroom Two



Bedroom Two



Bedroom Two



Bedroom Two



Bedroom Three



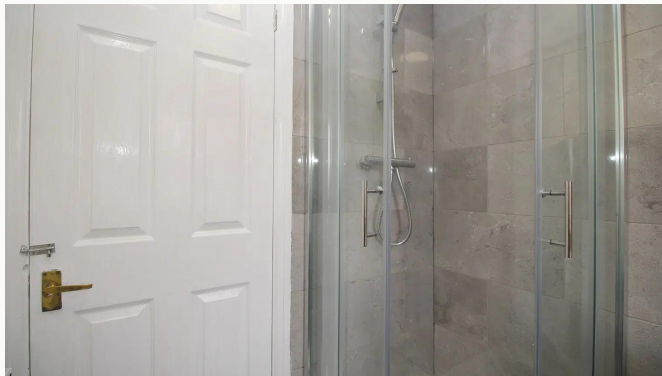
Bedroom Three



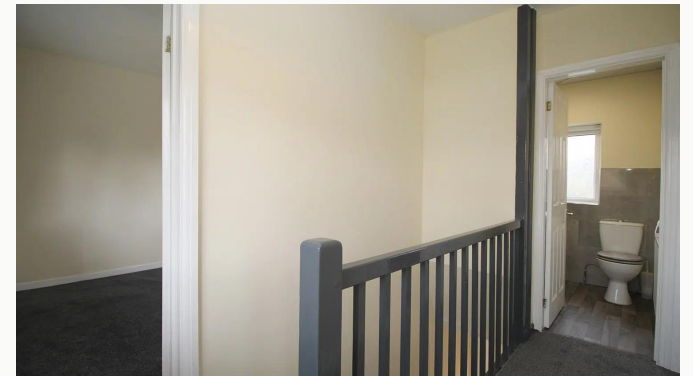
Bedroom Three



Shower Room



Shower Room



Landing



Hallway



Garden



Garden



Garden



Shelthorpe Road

Available
From 03/04/2024

Comes
Unfurnished

Bedrooms
3

Receptions
2

Bathrooms
1

Parking
Driveway

Postcode
LE11 2PF

Rent
£1,050 pcm

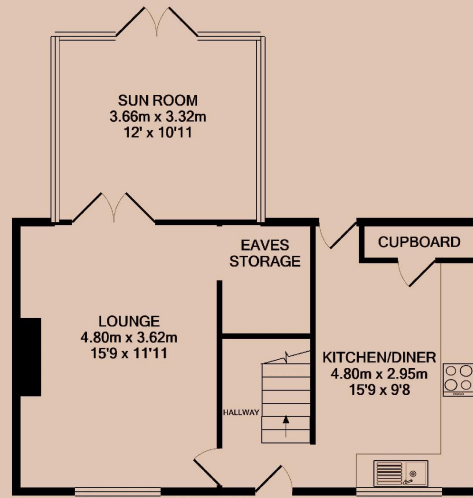
Deposit
£1,200

EPC
66 | D

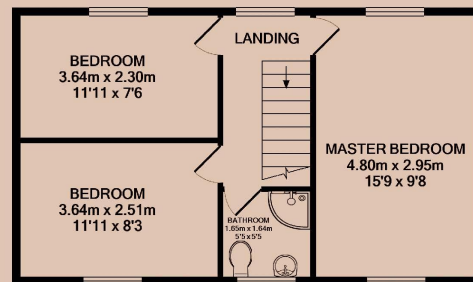
Council Tax Band
A

ID
#13023

Updated
24/04/2024



GROUND FLOOR



1ST FLOOR

Have a property like this? Let's work together.

Design and marketing are at the heart of our approach. With most people now looking for property online, we can get our clients' properties in front of as many people as the most prominent national agents. Where we differ is in the quality of our work. We create stunning digital particulars that highlight the individual attributes of every property we market, with videos and floor plans as standard.



OUR OFFICE
7 Biggin Street
Loughborough, LE11 1UA

CONTACT US
01509 320 320
let@huntleys.net

