



Heathcoat Street
Loughborough

2 Bed Terraced House • LE11 3BW • £950 pcm • £1,090 Deposit



Heathcoat Street, Loughborough

Conveniently situated on a quiet road, near the town centre and Queens park. This smart Victorian terrace house is a great choice for those wanting to be near all the towns amenities without all the usual noise. The well-presented accommodation comprises of a living room; dining room; kitchen; two double bedrooms; bathroom with shower over the bath; low maintenance rear garden; uPVC double glazing, gas central heating and on street parking.

Lounge 4.12m (13'6") x 3.57m (11'9")

Benefiting from a large bay window, functioning fireplace and light decor. This is a well proportioned room.

Dining Room 4.54m (14'11") x 3.57m (11'9")

The hub of the home with tall ceilings and light decor. Opens to the Kitchen keeping the home social, with french doors to the rear garden. Provides access to the first floor and Cellar.

Kitchen 3.02m (9'11") x 2.05m (6'9")

A clean and smart Kitchen. Complete with Fridge Freezer, hob, fan assisted oven, space for washing machine and ample storage.

Master Bedroom 3.57m (11'9") x 3.42m (11'3")

A large double bedroom overlooking the front of the property and spanning its full width. Contemporary decorated whilst retaining original features. Built-in wardrobes included.

Bedroom Two 3.68m (12'1") x 2.82m (9'3")

A well proportioned double bedroom overlooking the rear garden with cupboard over the stairs.

Bathroom

Three piece bathroom with shower over the bath, toilet, wash hand basin, heated towel rail and window to the rear. Smart tiling and feature bath completes the look.

Parking

On street parking with residents parking permit.

Garden

A practical and attractive rear garden. Outhouse included for storage.

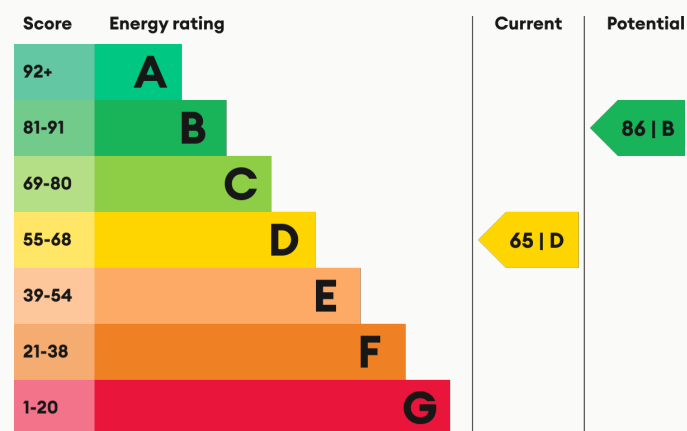
Heating

Gas-fired central heating.

Glazing

Modern, good quality, uPVC double glazing.

Energy Performance



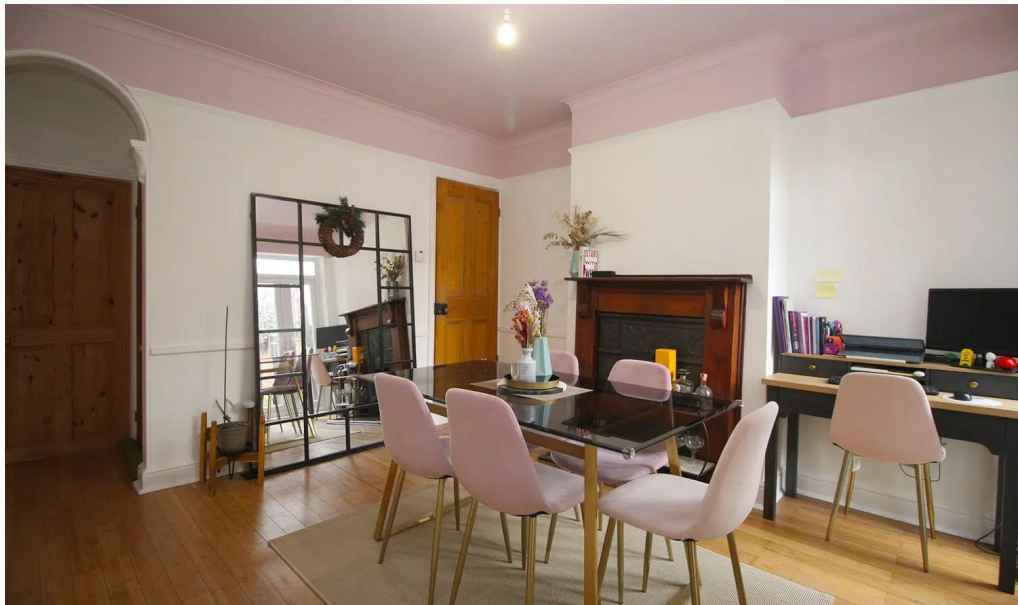
We aim to make our particulars both accurate and reliable. However they are not guaranteed; nor do they form part of an offer or contract. If you require clarification on any points then please contact us, especially if you are traveling some distance to view. All measurements are to widest point.



Lounge



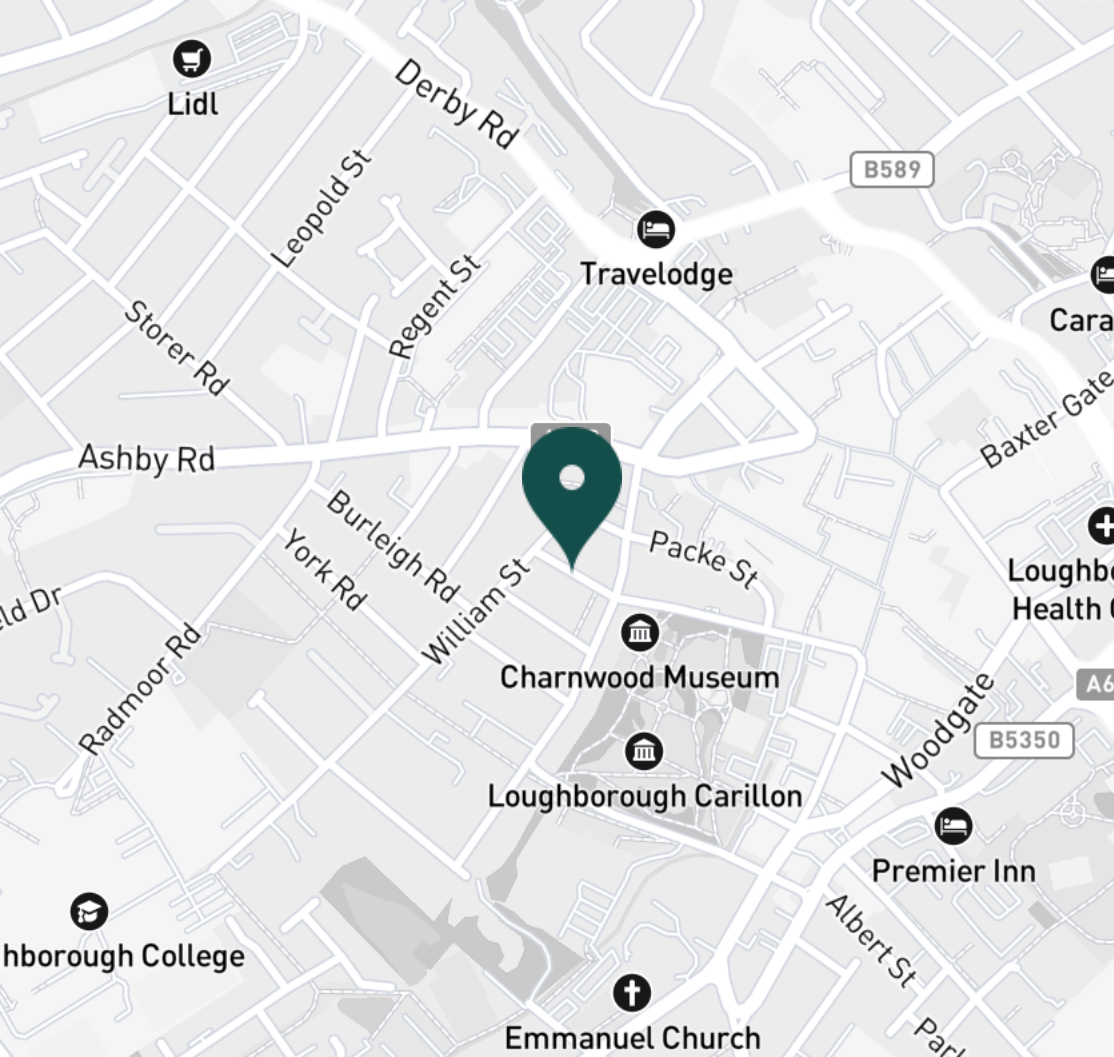
Lounge



Dining Room



Dining Room



SUPERMARKETS

Sainsburys Loughborough	0.3 mi
Tesco Superstore Loughborough	0.3 mi
Marks & Spencer	0.3 mi
Lidl Loughborough	0.7 mi
Aldi Loughborough	1.0 mi

GYMS

Anytime Fitness Loughborough	0.4 mi
PureGym Loughborough	0.5 mi
Fit4Less	0.6 mi
Dynamite Gym Ltd	0.7 mi
CrossFit Loughborough	0.8 mi

TRAIN STATIONS

Loughborough	1.3 mi
Barrow upon Soar	4.1 mi
Sileby	6.0 mi
East Midlands Parkway	10.1 mi
Syston	10.3 mi

NURSERY SCHOOLS

Small World Nursery	0.2 mi
Busy Bees in Loughborough	0.3 mi
Kingscliffe Day Nursery	0.4 mi
Babblebrooke Day Nursery	0.5 mi
Emmanuel PS	0.7 mi

PRIMARY SCHOOLS

Loughborough CE PS	0.3 mi
St Marys Catholic PS	0.3 mi
Our Lady's Convent Sch	0.8 mi
Rendell Primary School	0.8 mi
Fairfield Preparatory Sch	1.0 mi

HIGH SCHOOLS

RNIB College Loughborough	0.5 mi
Lbro Uni School Of The Arts	0.5 mi
Limehurst Academy	0.6 mi
Our Lady's Convent Sch	0.8 mi
Loughborough College	1.0 mi

Discover
Loughborough



- ✓ Close to Town and Uni
- ✓ Well Presented
- ✓ Low Maintenance Garden
- ✓ Two Double Bedrooms
- ✓ Large Bathroom
- ✓ Unfurnished





Dining Room



Kitchen



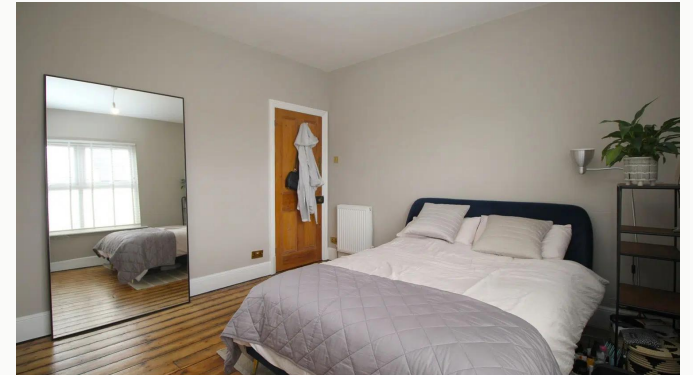
Kitchen



Master Bedroom



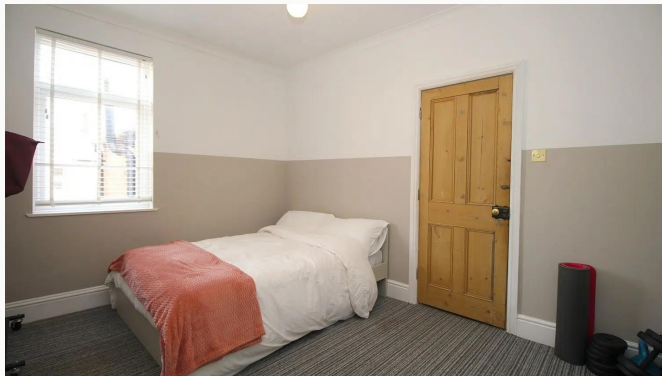
Master Bedroom



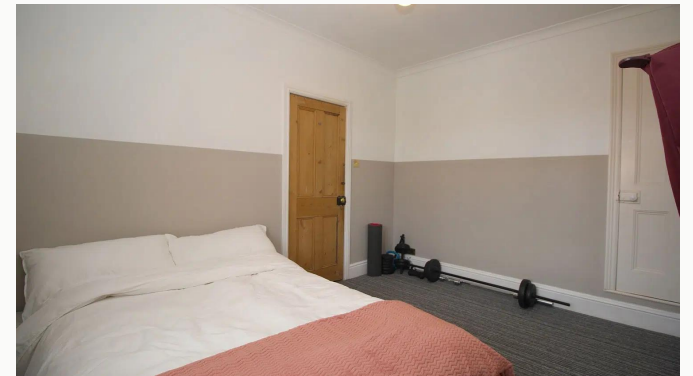
Master Bedroom



Bedroom Two



Bedroom Two



Bedroom Two



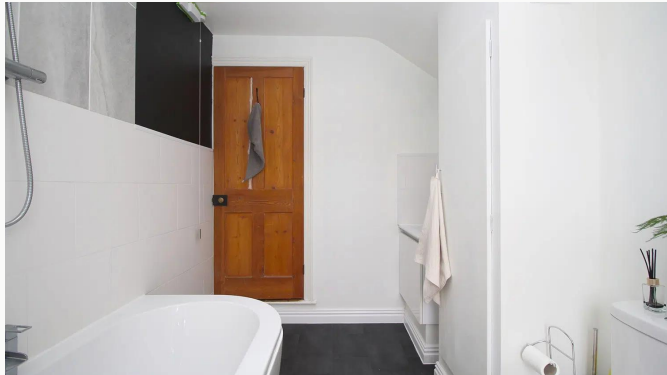
Bedroom Two



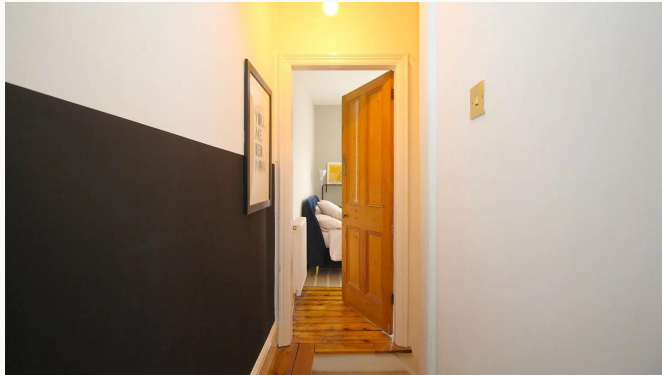
Bathroom



Bathroom



Bathroom



Landing



Garden



Garden



Garden



Heathcoat Street

Available
From 08/07/2026

Comes
Unfurnished

Bedrooms
2

Receptions
2

Bathrooms
1

Parking
With permit

Postcode
LE11 3BW

Rent
£950 pcm

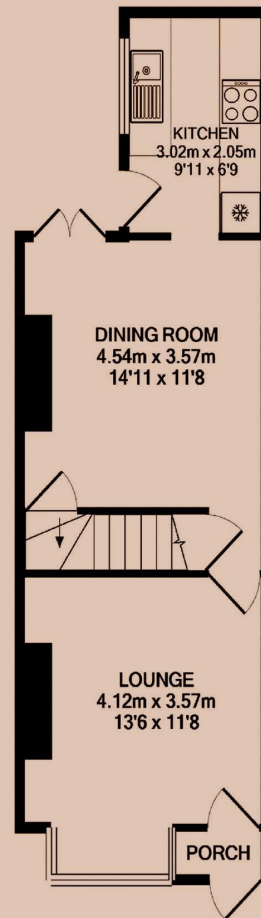
Deposit
£1,090

EPC
65 | D

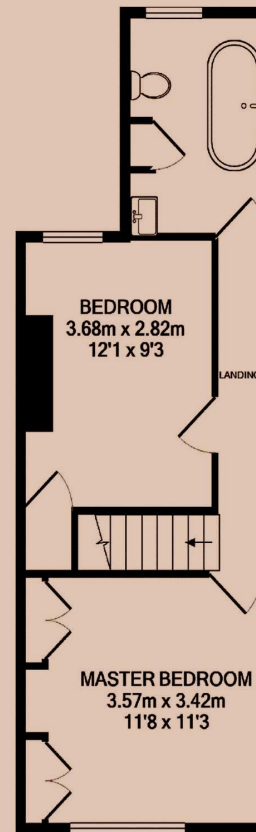
Council Tax Band
B

ID
#9865

Updated
02/06/2026



GROUND FLOOR



1ST FLOOR

Have a property like this? Let's work together.

Design and marketing are at the heart of our approach. With most people now looking for property online, we can get our clients' properties in front of as many people as the most prominent national agents. Where we differ is in the quality of our work. We create stunning digital particulars that highlight the individual attributes of every property we market, with videos and floor plans as standard.



OUR OFFICE
7 Biggin Street
Loughborough, LE11 1UA

CONTACT US
01509 320 320
let@huntleys.net

