



Tulip Crescent
Loughborough

2 Bed End of Terrace House • LE11 2WH • £995 pcm • £1,140 Deposit



Tulip Crescent, Loughborough

This well-presented two-bedroom home is now available to let. The property offers a generous size lounge, followed by a spacious kitchen area, which features French doors opening onto the garden, creating a bright and inviting space. Located on the first floor, the property offers a spacious master bedroom positioned at the rear, along with a second well-proportioned double bedroom and a modern family bathroom. Additional benefits include a convenient downstairs WC.

Kitchen

A bright and spacious kitchen featuring a fitted oven, gas hob, extractor hood and space for a dining table. It runs the full width of the house, with French doors affording views of the rear garden.

Lounge

A generous sized room, allowing natural light to flow through, with direct access to the kitchen.

Downstairs W/C

A modern WC and wash basin are located downstairs for added convenience.

Master Bedroom

With views to the rear of the property this room runs the full width of the house.

Bedroom Two

A double room with views to the front of the property.

Bathroom

A modern three-piece family bathroom complete with an electric shower over the bath.

Garden

The property features a walled and generously sized rear garden, laid mainly to lawn with gated access to the car parking area. Additional garden areas sit at the front and rear side of the property.

Parking

Two allocated car parking spaces at the rear of the property with additional parking available at the front.

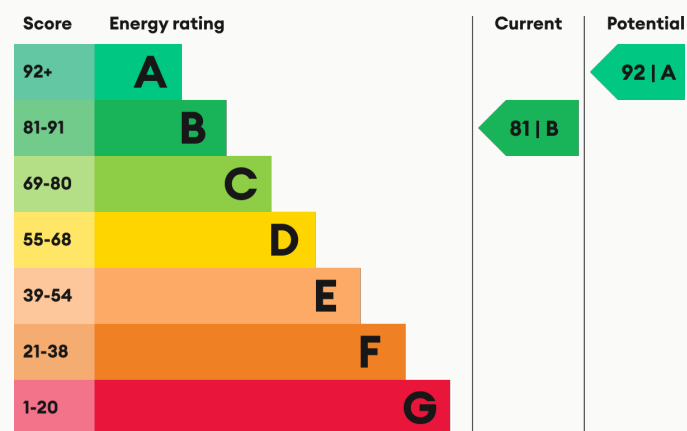
Heating

Gas-fired central heating.

Glazing

Modern, good quality, uPVC double glazing.

Energy Performance



We aim to make our particulars both accurate and reliable. However they are not guaranteed; nor do they form part of an offer or contract. If you require clarification on any points then please contact us, especially if you are traveling some distance to view. All measurements are to widest point.



Kitchen



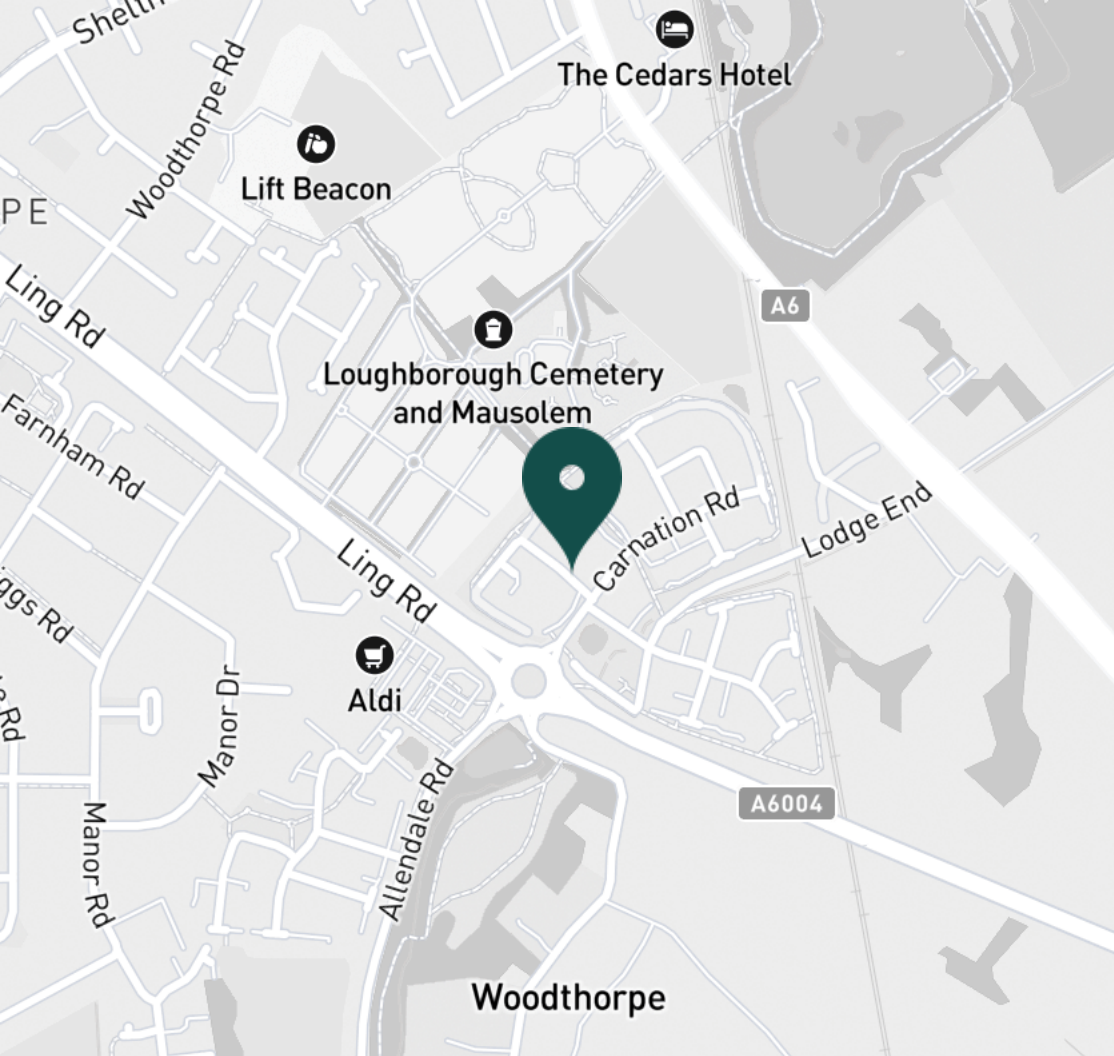
Kitchen



Kitchen



Kitchen



SUPERMARKETS

Tesco Extra Loughborough	0.9 mi
Co-op Food Quorn	1.3 mi
Sainsburys Loughborough	2.0 mi
Co-op Food Barrow Upon Soar	2.3 mi
Co-op Food Knightthorpe Rd	2.4 mi

GYMS

Fit4Less	1.6 mi
Radmoor Centre	1.7 mi
Rosemary Conley Fitness Club	1.7 mi
Loughborough University Pool	1.8 mi
Loughborough Sport	1.9 mi

TRAIN STATIONS

Barrow upon Soar	2.5 mi
Loughborough	3.0 mi
Sileby	4.4 mi
Syston	8.7 mi
South Wigston	9.6 mi

NURSERY SCHOOLS

Parkside PS	1.0 mi
Shelthorpe Childrens Centre	1.0 mi
Westwards Nursery	1.2 mi
Quorn Nursery School	1.5 mi
Radmoor Nursery	1.5 mi

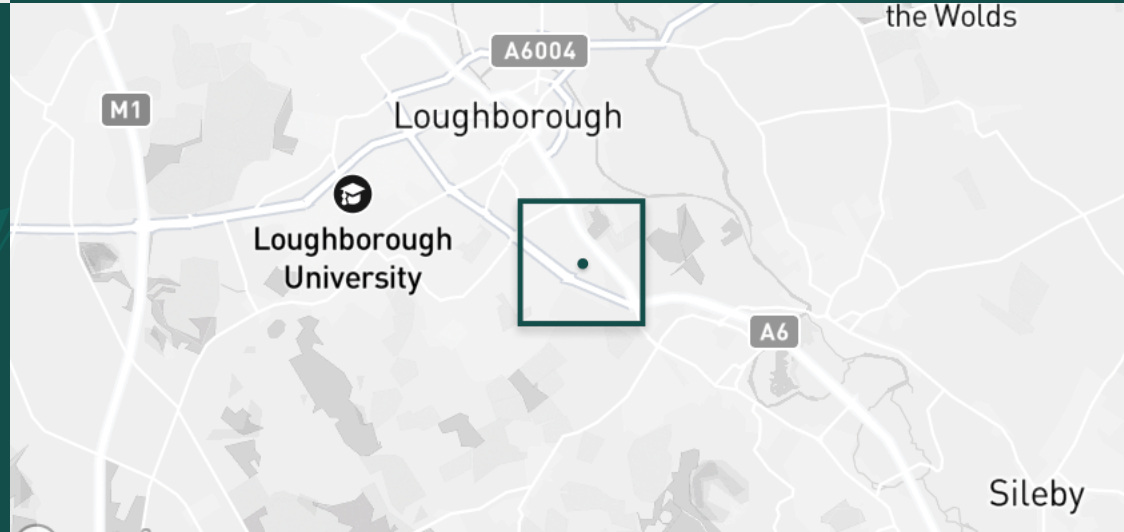
PRIMARY SCHOOLS

Beacon Primary Academy	1.0 mi
Sacred Heart Catholic PS	1.1 mi
Loughborough Grammar Sch	1.2 mi
Our Lady's Convent Sch	1.2 mi
Outwoods Edge PS	1.3 mi

HIGH SCHOOLS

Loughborough Grammar Sch	1.2 mi
Our Lady's Convent Sch	1.2 mi
Rawlins Academy	1.4 mi
Woodbrook Vale	1.6 mi
Loughborough College	1.7 mi

Discover
Loughborough





Lounge



Lounge



Lounge



Downstairs W/C



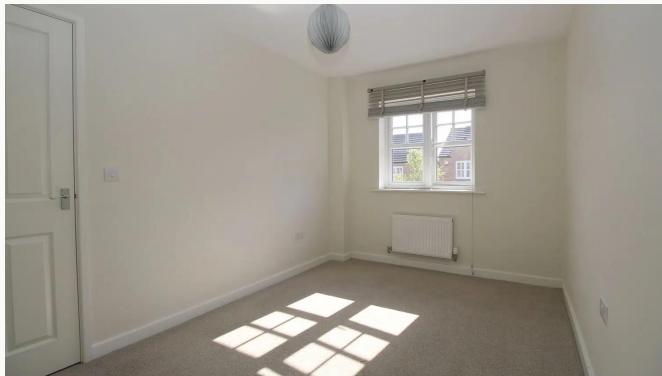
Master Bedroom



Master Bedroom



Second Bedroom



Second Bedroom



Second Bedroom



Bathroom



Bathroom



Bathroom



Garden



Garden



Allocated Parking



Garden Area

Available
From 09/04/2026

Comes
Unfurnished

Bedrooms
2

Receptions
1

Bathrooms
2

Parking
Allocated

Postcode
LE11 2WH

Rent
£995 pcm

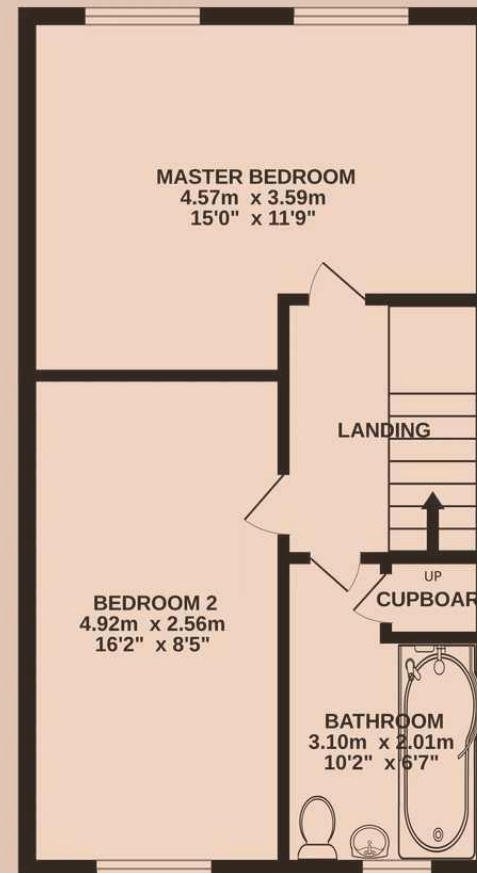
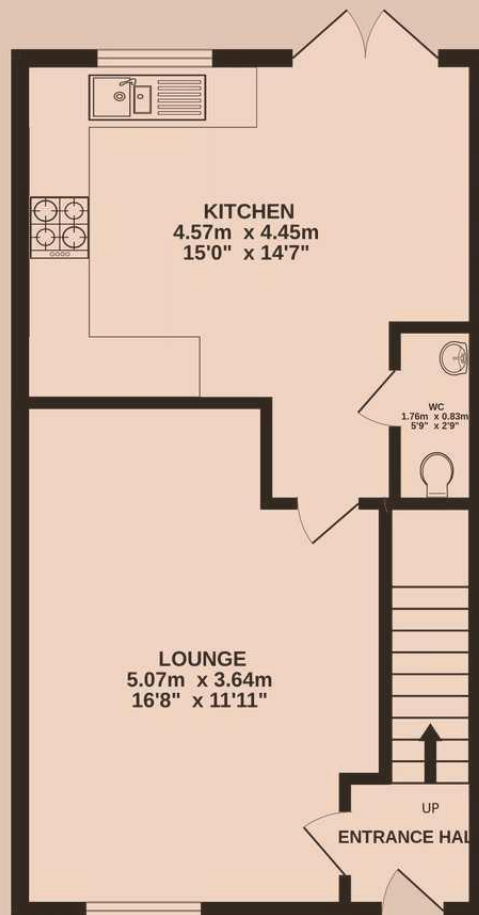
Deposit
£1,140

EPC
81 | B

Council Tax Band
B

ID
#19395

Updated
10/04/2026



Have a property like this? Let's work together.

Design and marketing are at the heart of our approach. With most people now looking for property online, we can get our clients' properties in front of as many people as the most prominent national agents. Where we differ is in the quality of our work. We create stunning digital particulars that highlight the individual attributes of every property we market, with videos and floor plans as standard.



OUR OFFICE
7 Biggin Street
Loughborough, LE11 1UA

CONTACT US
01509 320 320
let@huntleys.net



Huntleys

