



# *Villency Court*

Loughborough

1 Bed 1st Floor Apartment • LE11 1EB • £800 pcm • £920 Deposit



## Villency Court, Loughborough

A modern one-bedroom furnished apartment, situated close to Loughborough Town Centre and Loughborough Train Station. This property comes with an open living space and kitchen, kitted with appliances and furniture. A sizeable, contemporary bathroom is included as well as a furnished double bedroom. Allocated parking within the gated block car park. Now available to let.

### Lounge / Diner

An open living space, with a large floor-to-ceiling window overlooking Nottingham Street. This living space is large enough to be used as both lounge and diner, and includes furniture pictured. Open to the kitchen.

### Kitchen

Open to the lounge, this kitchen comes equipped with a breakfast bar, fridge/freezer, washing machine, dishwasher, oven and hob.

### Bedroom

A double bedroom, including the furniture pictured.

### Bathroom

A contemporary three piece bathroom. Includes a bath, sink, toilet, and shower above the bath.

### Parking

Allocated parking for one car within the gated car park.

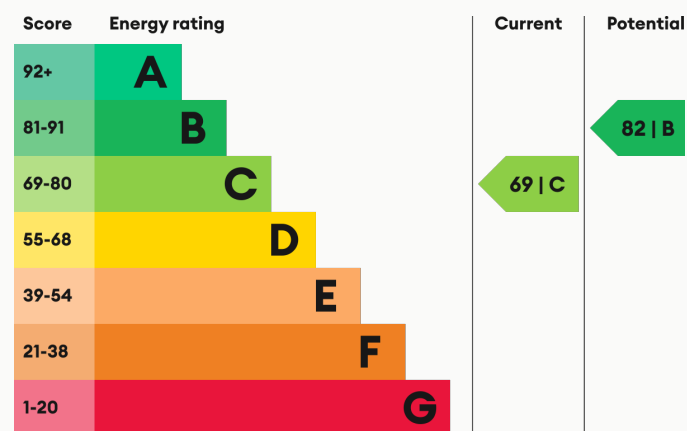
### Heating

Gas-fired central heating.

### Glazing

Modern, good quality, uPVC double glazing.

### Energy Performance



We aim to make our particulars both accurate and reliable. However they are not guaranteed; nor do they form part of an offer or contract. If you require clarification on any points then please contact us, especially if you are traveling some distance to view. All measurements are to widest point.





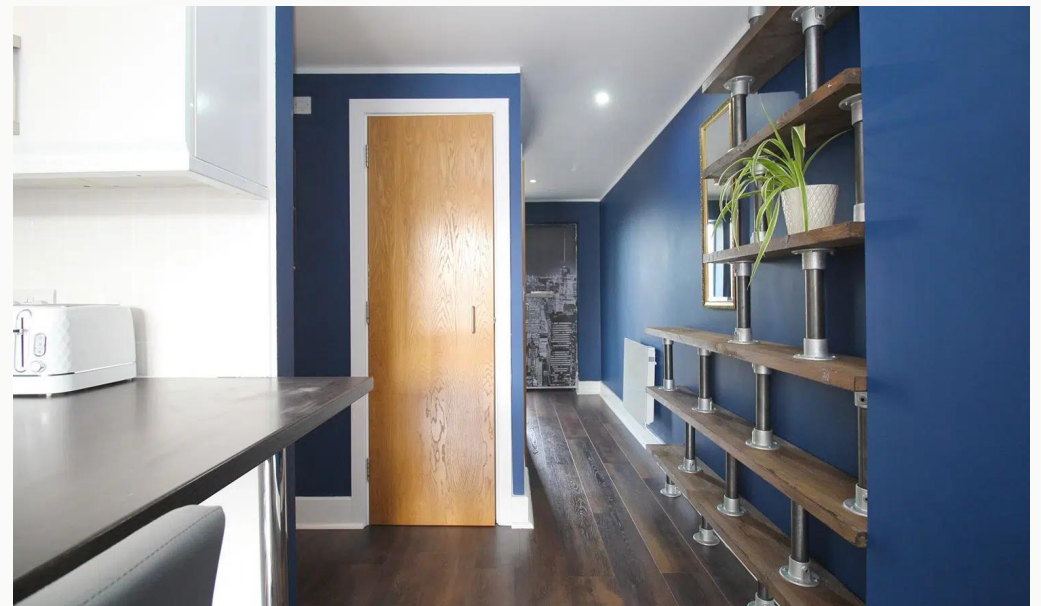
Kitchen / Lounge



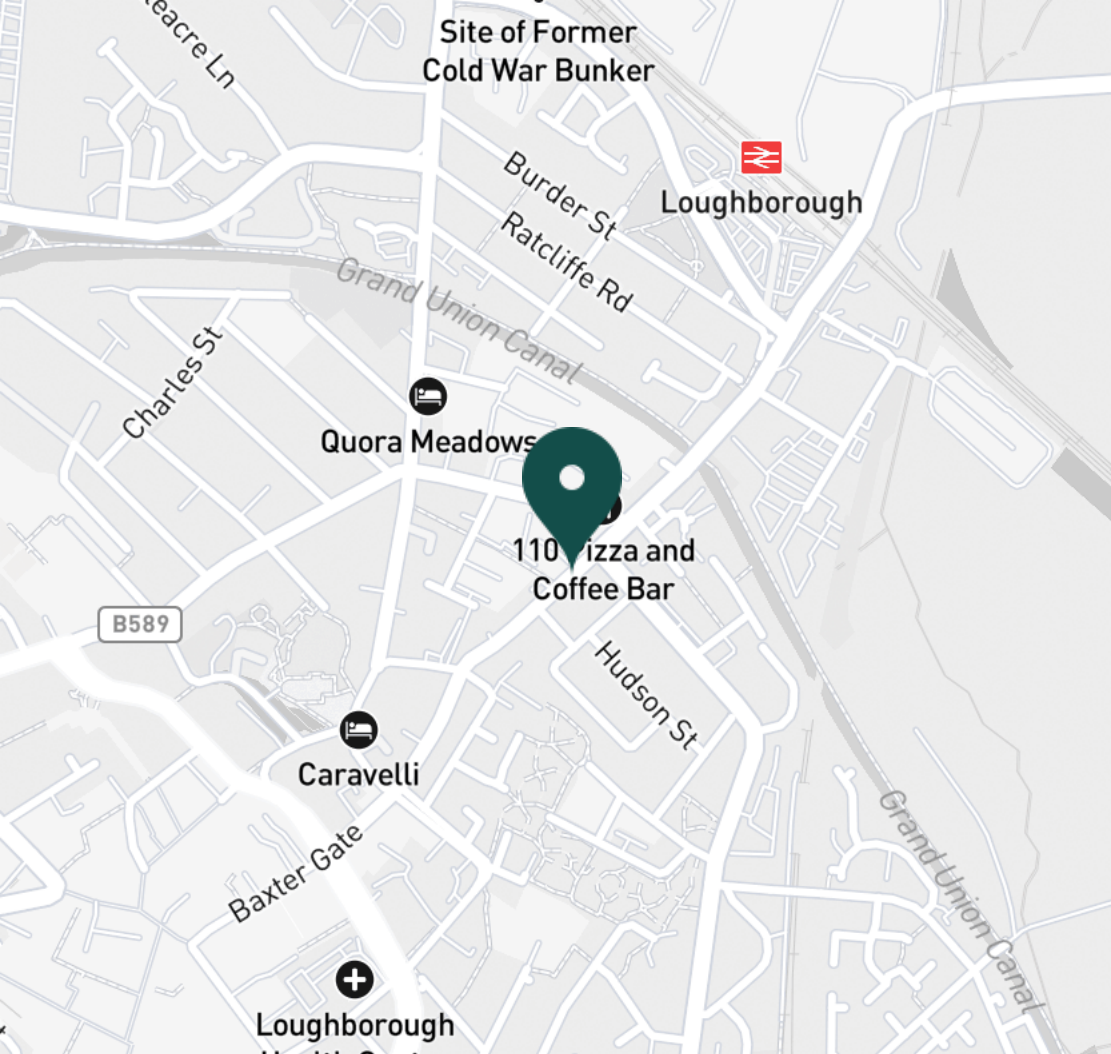
Lounge



Kitchen / Lounge



Hallway



#### SUPERMARKETS

Tesco Superstore Loughborough	0.7 mi
Marks & Spencer	0.8 mi
Aldi Loughborough	0.8 mi
Lidl Loughborough	1.0 mi
Sainsburys Loughborough	1.0 mi

#### TRAIN STATIONS

Loughborough	0.4 mi
Barrow upon Soar	3.9 mi
Sileby	5.8 mi
Syston	10.1 mi
East Midlands Parkway	10.4 mi

#### PRIMARY SCHOOLS

Rendell Primary School	0.3 mi
Cobden PS	0.6 mi
Fairfield Preparatory Sch	0.8 mi
St Marys Catholic PS	1.0 mi
Our Lady's Convent Sch	1.1 mi

#### GYMS

CrossFit Loughborough	0.3 mi
PureGym Loughborough	0.5 mi
Dynamite Gym Ltd	0.6 mi
Anytime Fitness Loughborough	0.6 mi
NPC Performance Centre	0.8 mi

#### NURSERY SCHOOLS

Cobden Childrens Centre	0.4 mi
Babblebrooke Day Nursery	0.5 mi
Lime Tree Nursery	0.6 mi
Small World Nursery	0.9 mi
Emmanuel PS	1.0 mi

#### HIGH SCHOOLS

Limehurst Academy	0.4 mi
Our Lady's Convent Sch	1.1 mi
Loughborough High Sch	1.2 mi
RNIB College Loughborough	1.4 mi
Loughborough Grammar Sch	1.5 mi





- ✓ One Bedroom Apartment
- ✓ Available Now
- ✓ Furnished
- ✓ Allocated Parking
- ✓ Appliances Included
- ✓ Close to Town







Bedroom



Bedroom



Bedroom



Bedroom



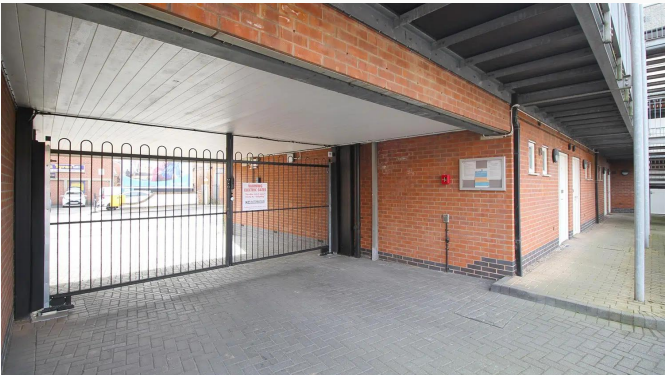
Bathroom



Entrance



Parking



Gated Entrance



Villency Court

**Available**  
From 02/07/2025

**Comes**  
Furnished

**Bedrooms**  
1

**Receptions**  
1

**Bathrooms**  
1

**Parking**  
Allocated

**Postcode**  
LE11 1EB

**Rent**  
£800 pcm

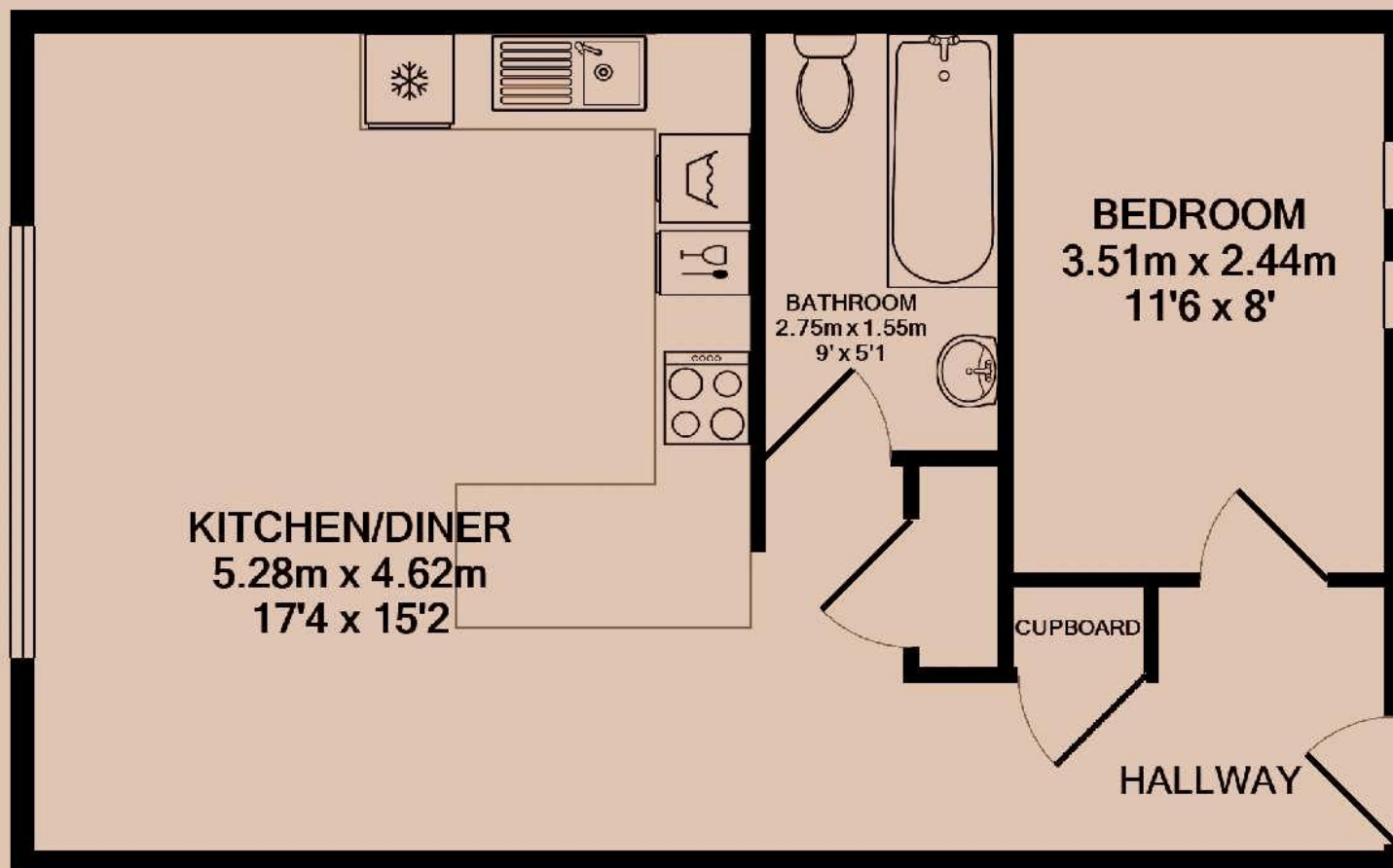
**Deposit**  
£920

**EPC**  
69 | C

**Council Tax Band**  
A

**ID**  
#16991

**Updated**  
02/07/2025





# *Have a property like this? Let's work together.*

Design and marketing are at the heart of our approach. With most people now looking for property online, we can get our clients' properties in front of as many people as the most prominent national agents. Where we differ is in the quality of our work. We create stunning digital particulars that highlight the individual attributes of every property we market, with videos and floor plans as standard.



**OUR OFFICE**  
7 Biggin Street  
Loughborough, LE11 1UA

**CONTACT US**  
01509 320 320  
let@huntleys.net

