



Beacon Road
Loughborough

1 Bed Ground Floor Apartment • LE11 2BQ • £700 pcm • £800 Deposit



Beacon Road, Loughborough

Conveniently situated in the edge of town. This furnished, Victorian converted ground-floor apartment is a great choice for those wanting to be near all the towns amenities. Accommodation comprises of a living room; kitchen; a large bedroom; shower room; Upvc double glazing, gas central heating and on street permit parking.

Lounge

An open and spacious living room, comes with some furniture pictured.

Kitchen

Split into two rooms. This kitchen includes a fridge/freezer, washing machine, oven and hob. Access to the cellar and rear garden.

Bedroom

A spacious double bedroom, comes with some furniture pictured.

Shower Room

A three piece shower room, including a walk-in shower, sink and toilet.

Parking

On street parking available with a permit.

Garden

A good sized garden located to the rear of the property.

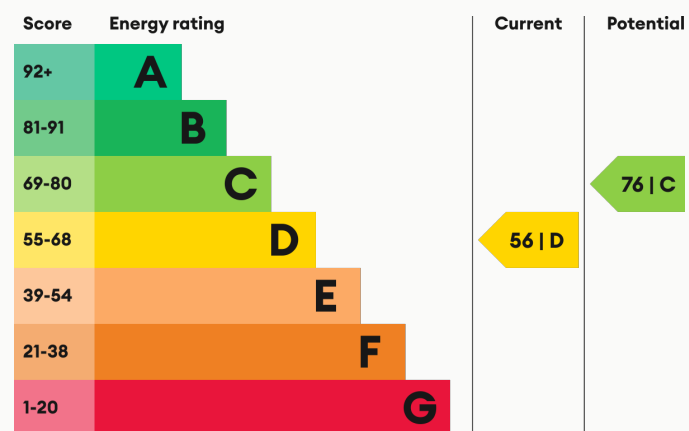
Heating

Gas fired central heating.

Glazing

Modern, good quality, uPVC double glazing.

Energy Performance



We aim to make our particulars both accurate and reliable. However they are not guaranteed; nor do they form part of an offer or contract. If you require clarification on any points then please contact us, especially if you are traveling some distance to view. All measurements are to widest point.



Lounge



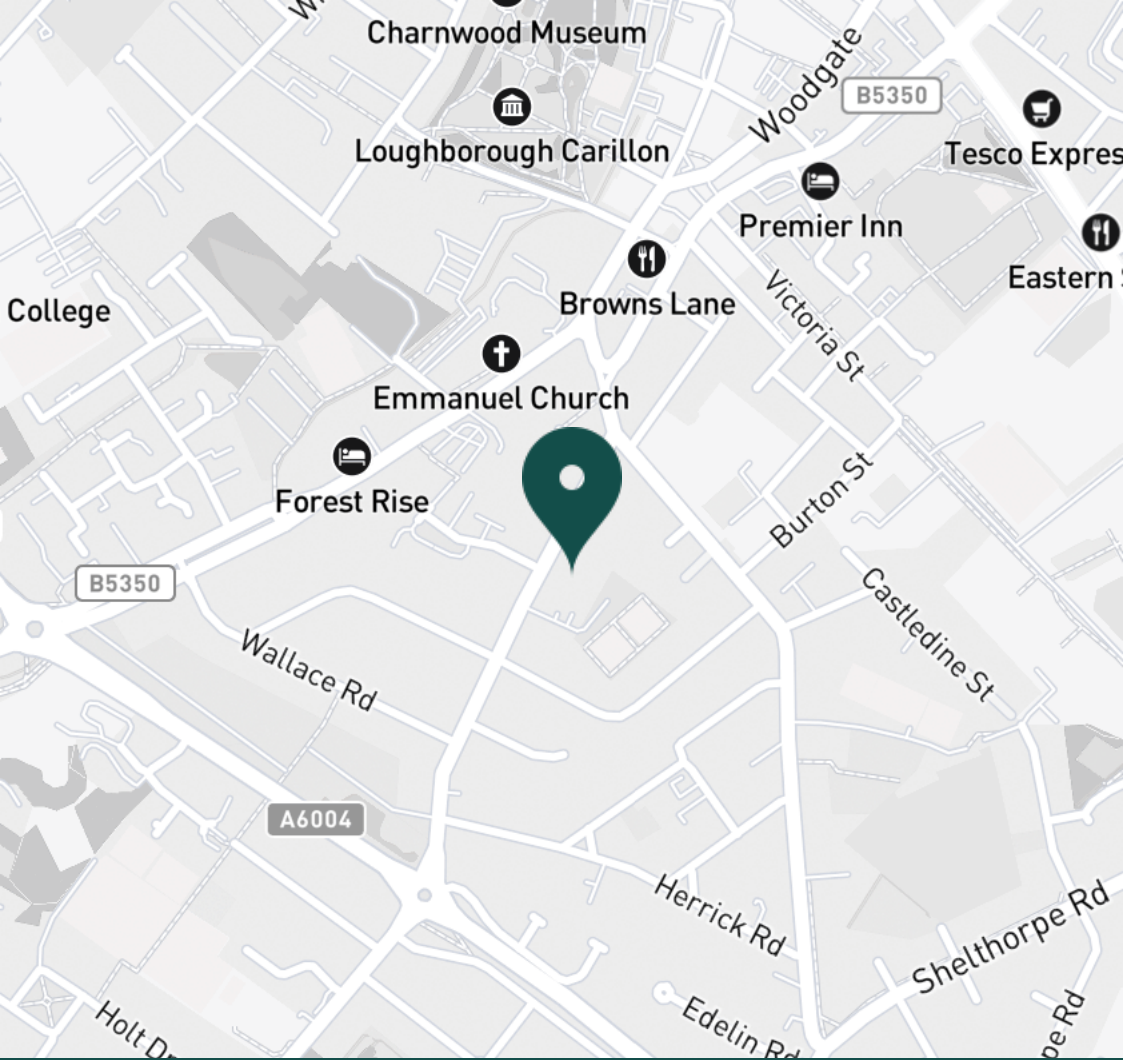
Lounge



Lounge



Kitchen



SUPERMARKETS		GYMS	
Tesco Extra Loughborough	0.8 mi	Fit4Less	0.4 mi
Sainsburys Loughborough	0.8 mi	Dynamite Gym Ltd	0.5 mi
Tesco Superstore Loughborough	0.8 mi	Anytime Fitness Loughborough	0.9 mi
Marks & Spencer	0.8 mi	PureGym Loughborough	1.0 mi
Lidl Loughborough	1.2 mi	Radmoor Centre	1.0 mi

TRAIN STATIONS		NURSERY SCHOOLS	
Loughborough	1.4 mi	Emmanuel PS	0.3 mi
Barrow upon Soar	3.5 mi	Westwards Nursery	0.3 mi
Sileby	5.4 mi	Parkside PS	0.4 mi
Syston	10.4 mi	Small World Nursery	0.7 mi
South Wigston	10.6 mi	Shelthorpe Childrens Centre	0.8 mi

PRIMARY SCHOOLS		HIGH SCHOOLS	
Our Lady's Convent Sch	0.3 mi	Our Lady's Convent Sch	0.3 mi
Sacred Heart Catholic PS	0.4 mi	RNIB College Loughborough	0.9 mi
Loughborough CE PS	0.8 mi	Loughborough College	1.0 mi
Mountfields Lodge Sch	0.8 mi	Lboro Uni School Of The Arts	1.0 mi
Fairfield Preparatory Sch	0.8 mi	Limehurst Academy	1.1 mi

Discover
Loughborough





Kitchen



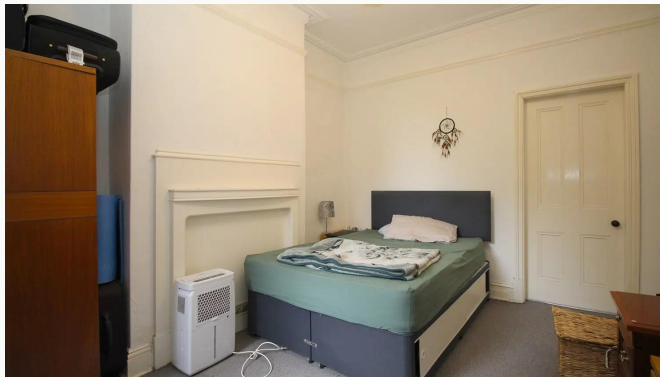
Kitchen



Kitchen



Bedroom



Bedroom



Bedroom



Shower Room



Garden



Garden

Available
From 10/10/2024

Comes
Furnished

Bedrooms
1

Receptions
1

Bathrooms
1

Parking
With permit

Postcode
LE11 2BQ

Rent
£700 pcm

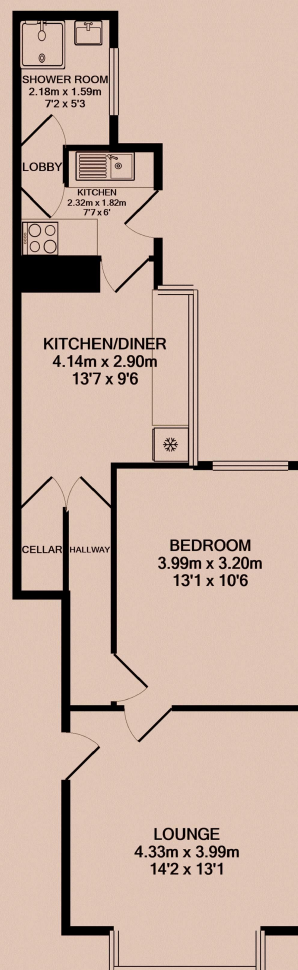
Deposit
£800

EPC
56 | D

Council Tax Band
A

ID
#6833

Updated
09/09/2024



Have a property like this? Let's work together.

Design and marketing are at the heart of our approach. With most people now looking for property online, we can get our clients' properties in front of as many people as the most prominent national agents. Where we differ is in the quality of our work. We create stunning digital particulars that highlight the individual attributes of every property we market, with videos and floor plans as standard.



OUR OFFICE
7 Biggin Street
Loughborough, LE11 1UA

CONTACT US
01509 320 320
let@huntleys.net

