



Buckingham Drive
Loughborough

2 Bed Semi-Detached House • LE11 4UY • £950 pcm • £1,090 Deposit



Buckingham Drive, Loughborough

Situated on a quiet road in Loughborough, a two-bedroom, semi-detached house soon available to let. This house comes with a sizeable lounge, kitchen/diner, two bedrooms and primary bathroom. To the front of the property is a quaint garden and driveway. To the rear is a good sized natural garden. Garage included. Appliances included. All photos and video tour are of actual property.

Lounge

A sizeable lounge overlooking the front garden, an open staircase gives access to the first floor. Some furniture pictured may be included.

Kitchen / Diner

Overlooking the rear garden, a kitchen that can also be used as a diner. This modern kitchen comes equipped with a fridge, cooker and hob. Sliding glass door gives access to the rear garden. Washing machine and freezer also included and located in the garage. Some furniture pictured may be included.

Master Bedroom

Overlooking the front of the property, a double bedroom including a built-in wardrobe. Some furniture pictured may be included.

Bedroom Two

A second bedroom on the first floor, overlooking the rear garden. Some furniture pictured may be included.

Bathroom

A three piece bathroom situated on the first floor. This washroom comes with a bath, sink, toilet, and shower above the bath.

Garden

A sizeable and private garden set to the rear of the house. Accessed via the garage side door and kitchen sliding door.

Parking

Driveway parking included as well as access to the garage.

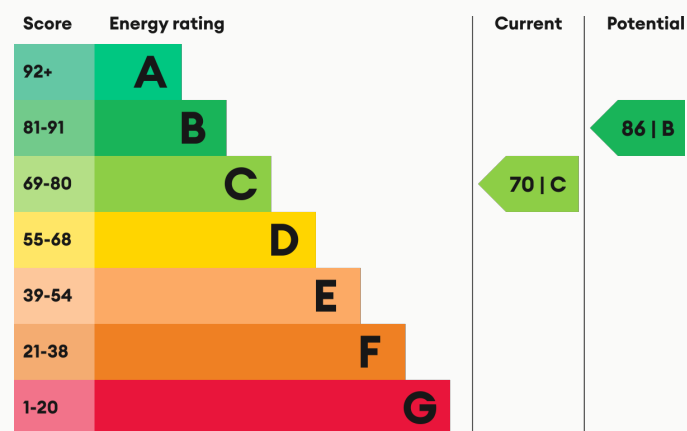
Heating

Gas-fired central heating.

Glazing

Modern, good quality, uPVC double glazing.

Energy Performance



We aim to make our particulars both accurate and reliable. However they are not guaranteed; nor do they form part of an offer or contract. If you require clarification on any points then please contact us, especially if you are traveling some distance to view. All measurements are to widest point.



Kitchen / Diner



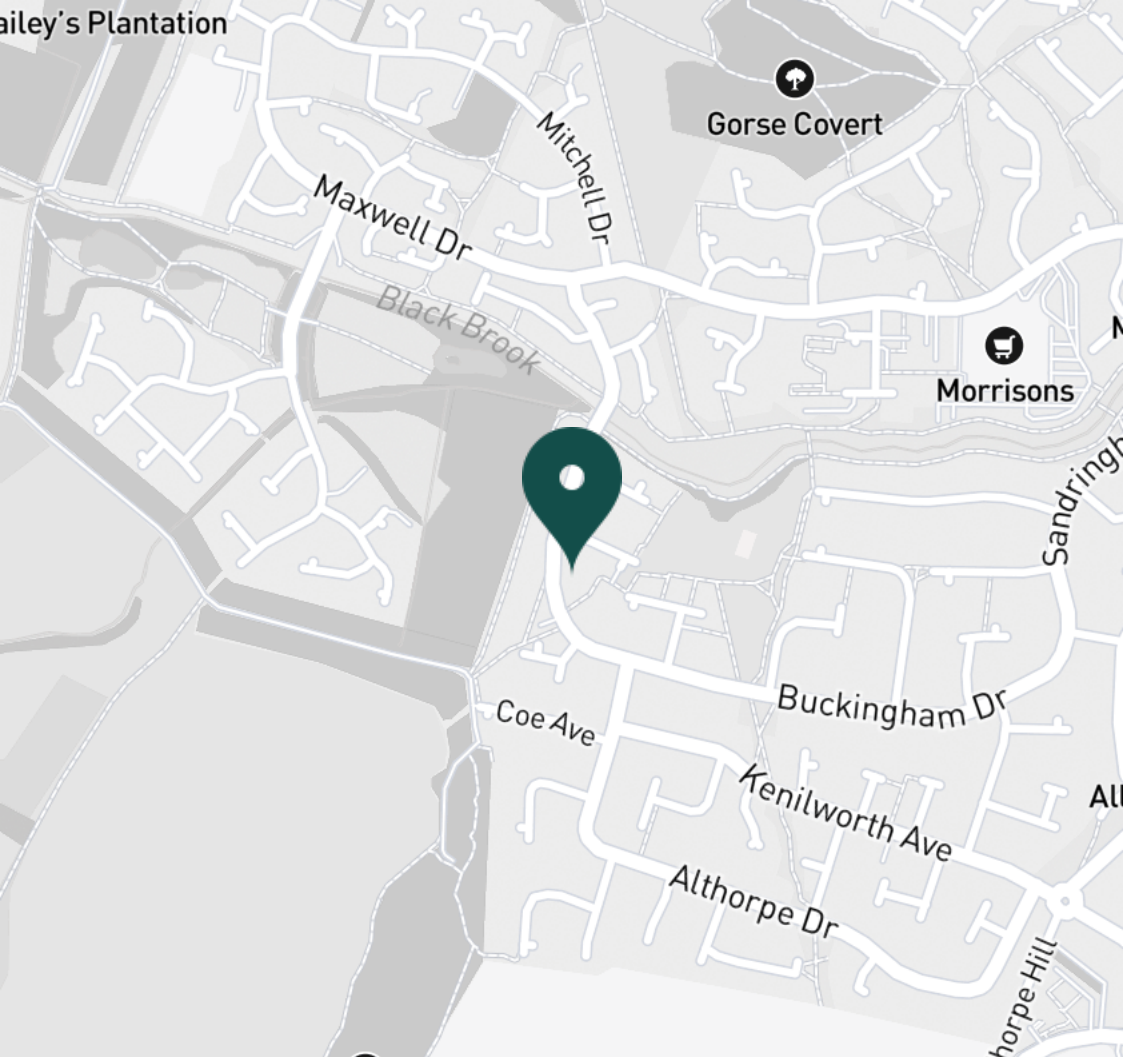
Kitchen / Diner



Kitchen / Diner



Kitchen / Diner



SUPERMARKETS

Morrisons Loughborough	0.5 mi
Co-op Food Knightthorpe Rd	1.0 mi
Lidl Loughborough	1.7 mi
Aldi Loughborough	2.0 mi
Tesco Superstore Loughborough	2.0 mi

GYMS

Loughborough University Pool	1.6 mi
Holywell Fitness Centre	1.7 mi
Loughborough Sport	1.7 mi
Radmoor Centre	1.7 mi
Burleigh Springs Leisure Club	1.8 mi

TRAIN STATIONS

Loughborough	2.7 mi
Barrow upon Soar	5.6 mi
Sileby	7.4 mi
East Midlands Parkway	9.9 mi
Syston	11.7 mi

NURSERY SCHOOLS

Charnwood College Playgroup	0.9 mi
Little House Day Nursery	0.9 mi
Robert Bakewell Playgroup	1.1 mi
Kingscliffe Day Nursery	1.7 mi
Loughborough Campus Nursery	1.8 mi

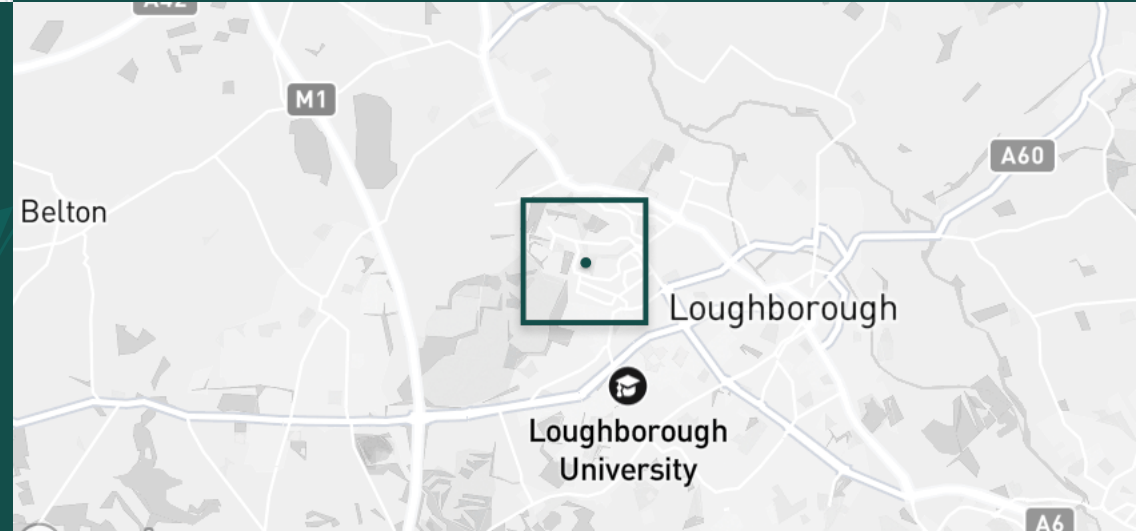
PRIMARY SCHOOLS

Stonebow County PS	0.5 mi
Thorpe Acre Junior Sch	0.7 mi
Ashmount Sch	0.9 mi
Booth Wood PS	1.0 mi
Robert Bakewell PS	1.2 mi

HIGH SCHOOLS

The Garendon High Sch	0.7 mi
De Lisle Catholic Science C	0.8 mi
Charnwood College	0.9 mi
Ashmount Sch	0.9 mi
Loughborough College	1.7 mi

Discover
Loughborough



- ✓ Garage
- ✓ Garden
- ✓ Appliances Included
- ✓ Two Bedrooms
- ✓ Driveway
- ✓ Available Soon





Lounge



Lounge



Lounge



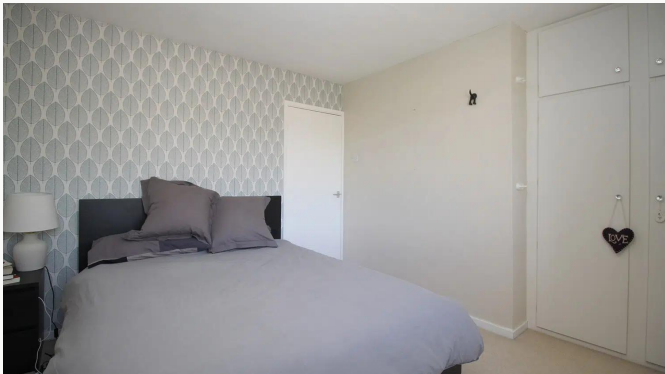
Lounge



Master Bedroom



Master Bedroom



Master Bedroom



Master Bedroom



Bedroom Two



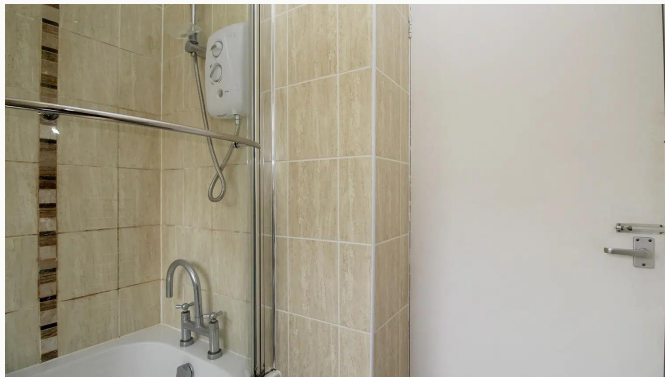
Bedroom Two



Bedroom Two



Bathroom



Bathroom



Landing



Porch



Garage



Garden

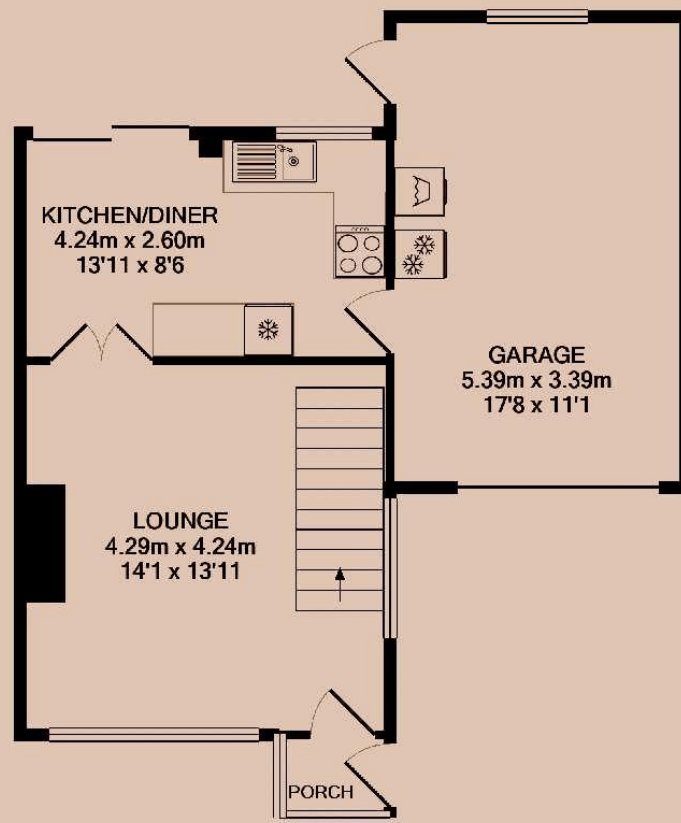


Garden

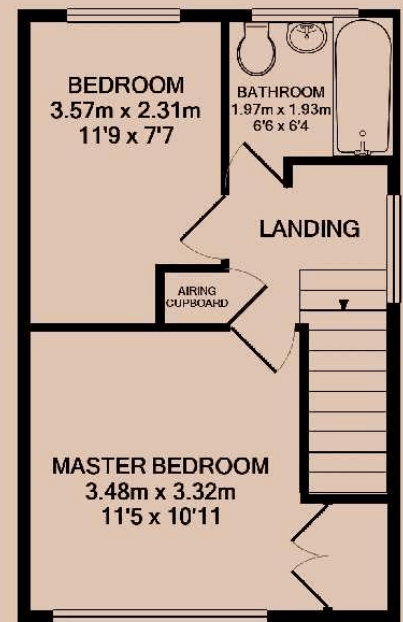


Garden

Available From 02/06/2025	Comes Part Furnished	Bedrooms 2	Receptions 1	Bathrooms 1	Parking Garage	Postcode LE11 4UY
Rent £950 pcm	Deposit £1,090	EPC 70 C	Council Tax Band B	ID #15985	Updated 08/05/2025	



GROUND FLOOR



1ST FLOOR

Have a property like this? Let's work together.

Design and marketing are at the heart of our approach. With most people now looking for property online, we can get our clients' properties in front of as many people as the most prominent national agents. Where we differ is in the quality of our work. We create stunning digital particulars that highlight the individual attributes of every property we market, with videos and floor plans as standard.



OUR OFFICE
7 Biggin Street
Loughborough, LE11 1UA

CONTACT US
01509 320 320
let@huntleys.net

