

An aerial photograph of Loughborough, UK, showing a mix of residential and commercial buildings. A prominent green location pin with a white letter 'H' is positioned in the upper center. The text 'The Gate' is written in a large, white, italicized serif font, with 'Loughborough' in a smaller, white, sans-serif font below it. At the bottom, a line of text provides details about a specific apartment unit. The background shows a dense urban area with a river, parking lots, and surrounding green fields under a clear blue sky.

H

The Gate
Loughborough

2 Bed 4th Floor Apartment • LE11 1GJ • £1,375 pcm • £1,580 Deposit



The Gate, Loughborough

Set in the highest specification development that Loughborough has to offer. This premium, two double bedroom fourth-floor apartment is ready for its first occupation. In the developers own words "The Gate offers a prestigious collection of luxury apartments with residents gym, residents swimming pool, communal 'hot desk' area and meeting room, parking, daily concierge service. This new 'Waterside Village' offers the perfect live, work and play living experience". PLEASE NOTE: Photos and video tour are of a similar apartment within the same block. Floor plan is of actual apartment.

Lounge / Diner 4.38m (14'4) x 4.05m (13'3)

Contemporary living area that is open plan to the kitchen and runs the full depth of the apartment. Featured floor-to-ceiling window, USB equipped PowerPoints and underfloor heating.

Kitchen 4.44m (14'7) x 2.59m (8'6)

A Pullman kitchen in charcoal with matching worktop and brick-bond tiling. Hidden away behind the smart cabinets there are all the integrated appliances including a fridge-freezer, dual ovens, washer-dryer, easy-clean hob and a dishwasher. Open plan to the living area.

Master Bedroom 4.38m (14'4) x 3.08m (10'1)

Elegant and spacious bedroom with benefits of an en-suite shower room featured floor-to-ceiling window, USB equipped PowerPoints and underfloor heating.

Bedroom Two 4.38m (14'4) x 2.96m (9'9)

Generously proportioned, with dimensions almost identical to the Master bedroom, featured floor-to-ceiling window, USB equipped PowerPoints and underfloor heating.

Bathroom 2.03m (6'8) x 2.01m (6'7)

This beautiful three-piece bathroom comes complete with a "rain shower" head over the bath, heated towel rail and shaving point. Classic, brick-bond tiling completes the look.

Ensuite Shower Room 2.03m (6'8) x 1.38m (4'6)

A three-piece en-suite shower room with a matching finish to the bathroom, heated towel rail and shaving point. Classic, brick-bond tiling completes the look.

Communal Garden

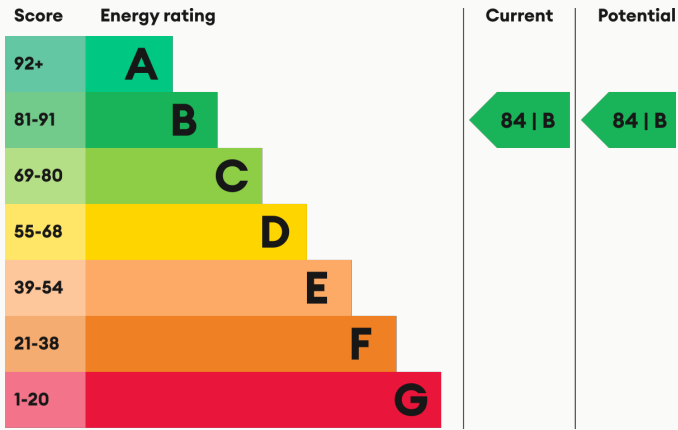
A smart and regularly maintained garden is available for the Waterside Village residents leisure.

Parking

Allocated parking within the complex with further visitors spaces available.

For more information about this property, visit our website huntleys.net.

Energy Performance



We aim to make our particulars both accurate and reliable. However they are not guaranteed; nor do they form part of an offer or contract. If you require clarification on any points then please contact us, especially if you are traveling some distance to view. All measurements are to widest point.



Lounge / Diner



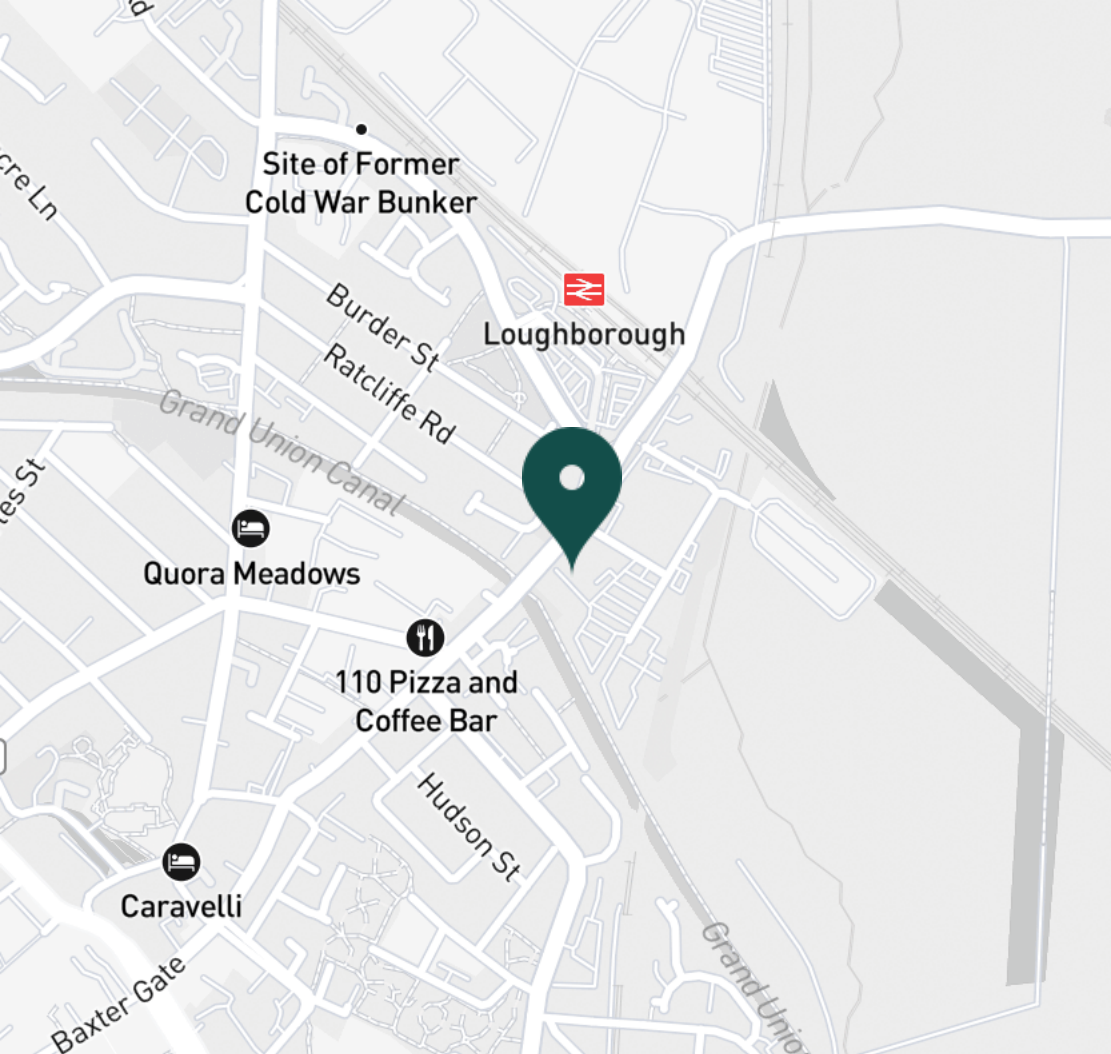
Lounge / Diner



Lounge / Diner



Lounge / Diner



SUPERMARKETS

Tesco Superstore Loughborough	0.9 mi
Marks & Spencer	1.0 mi
Aldi Loughborough	1.1 mi
Lidl Loughborough	1.1 mi
Sainsburys Loughborough	1.2 mi

GYMS

CrossFit Loughborough	0.5 mi
PureGym Loughborough	0.7 mi
Anytime Fitness Loughborough	0.8 mi
Dynamite Gym Ltd	0.9 mi
NPC Performance Centre	1.0 mi

TRAIN STATIONS

Loughborough	0.4 mi
Barrow upon Soar	3.9 mi
Sileby	6.0 mi
Syston	10.3 mi
East Midlands Parkway	10.5 mi

NURSERY SCHOOLS

Cobden Childrens Centre	0.7 mi
Babblebrooke Day Nursery	0.7 mi
Lime Tree Nursery	0.9 mi
Small World Nursery	1.1 mi
Busy Bees in Loughborough	1.2 mi

PRIMARY SCHOOLS

Rendell Primary School	0.5 mi
Cobden PS	0.9 mi
Fairfield Preparatory Sch	1.0 mi
St Marys Catholic PS	1.2 mi
Loughborough Grammar Sch	1.4 mi

HIGH SCHOOLS

Limehurst Academy	0.6 mi
Loughborough Grammar Sch	1.4 mi
Our Lady's Convent Sch	1.4 mi
Loughborough High Sch	1.4 mi
RNIB College Loughborough	1.4 mi

Discover
Loughborough



- ✓ Communal Swimming Pool
- ✓ Communal Gym
- ✓ Communal Offices
- ✓ Concierge
- ✓ Fourth Floor
- ✓ Underfloor Heating

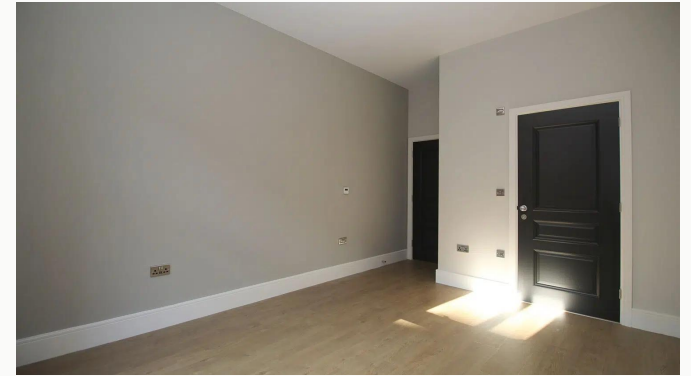




Kitchen



Master Bedroom



Master Bedroom



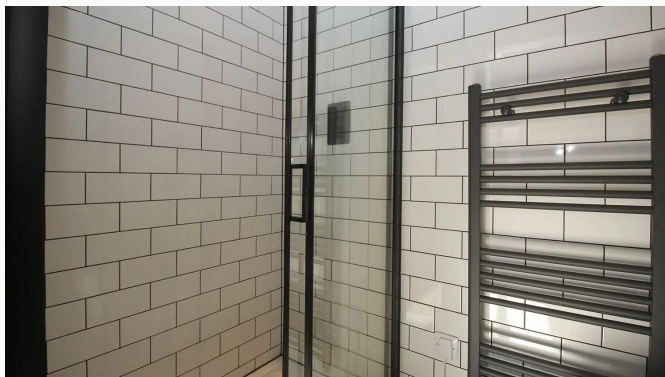
Master Bedroom



Master Bedroom



Ensuite



Ensuite



Bedroom Two



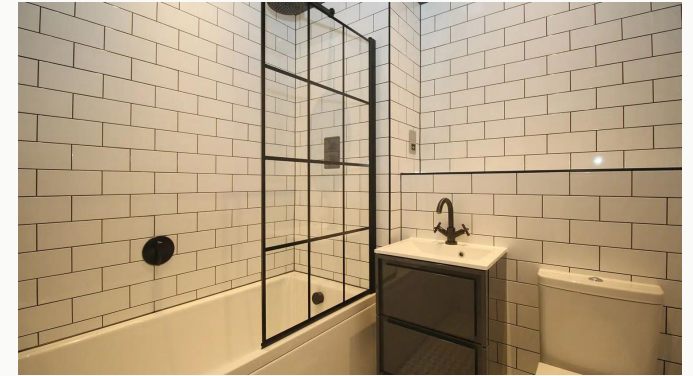
Bedroom Two



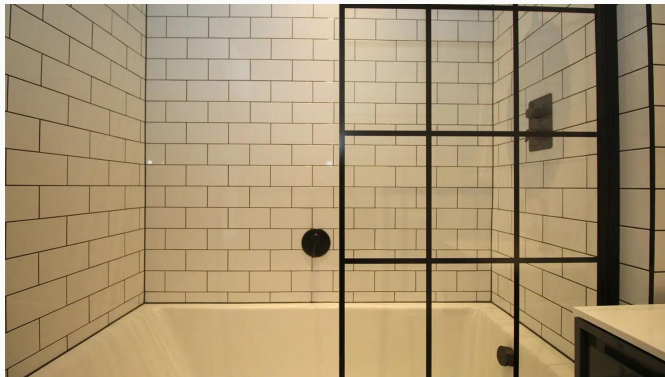
Master Bedroom



Bedroom Two



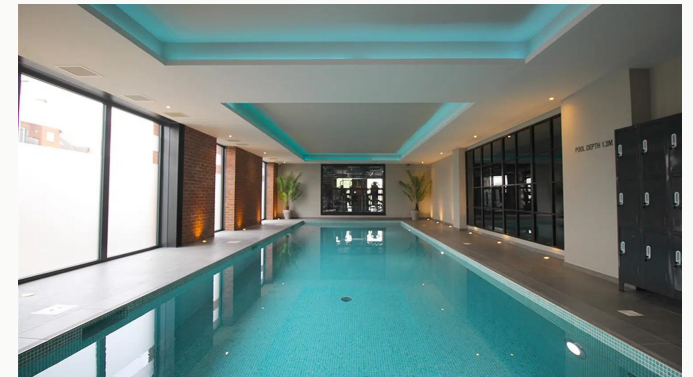
Bathroom



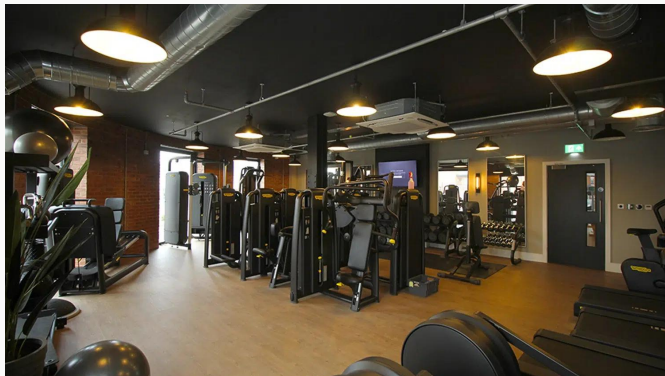
Bathroom



Hallway



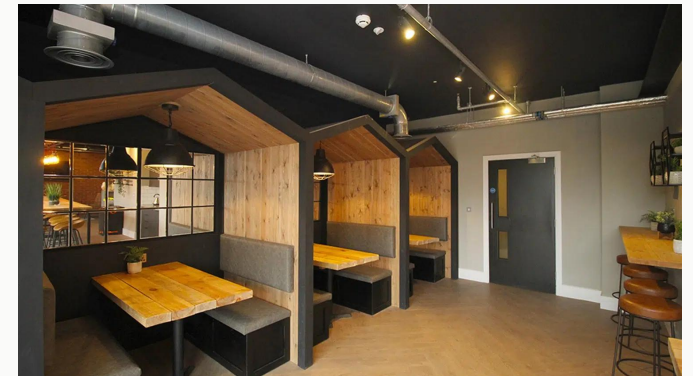
Swimming Pool



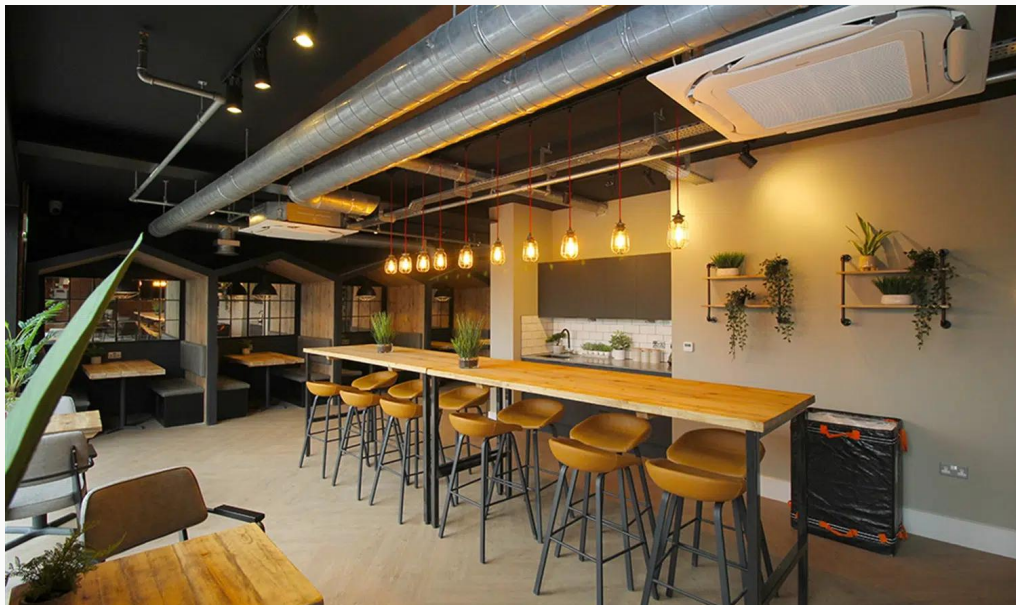
Gym



Communal Gym



Reception



Communal Office Area



The Gate Waterside Village

Available
From 07/06/2025

Comes
Unfurnished

Bedrooms
2

Receptions
1

Bathrooms
2

Parking
Allocated

Postcode
LE11 1GJ

Rent
£1,375 pcm

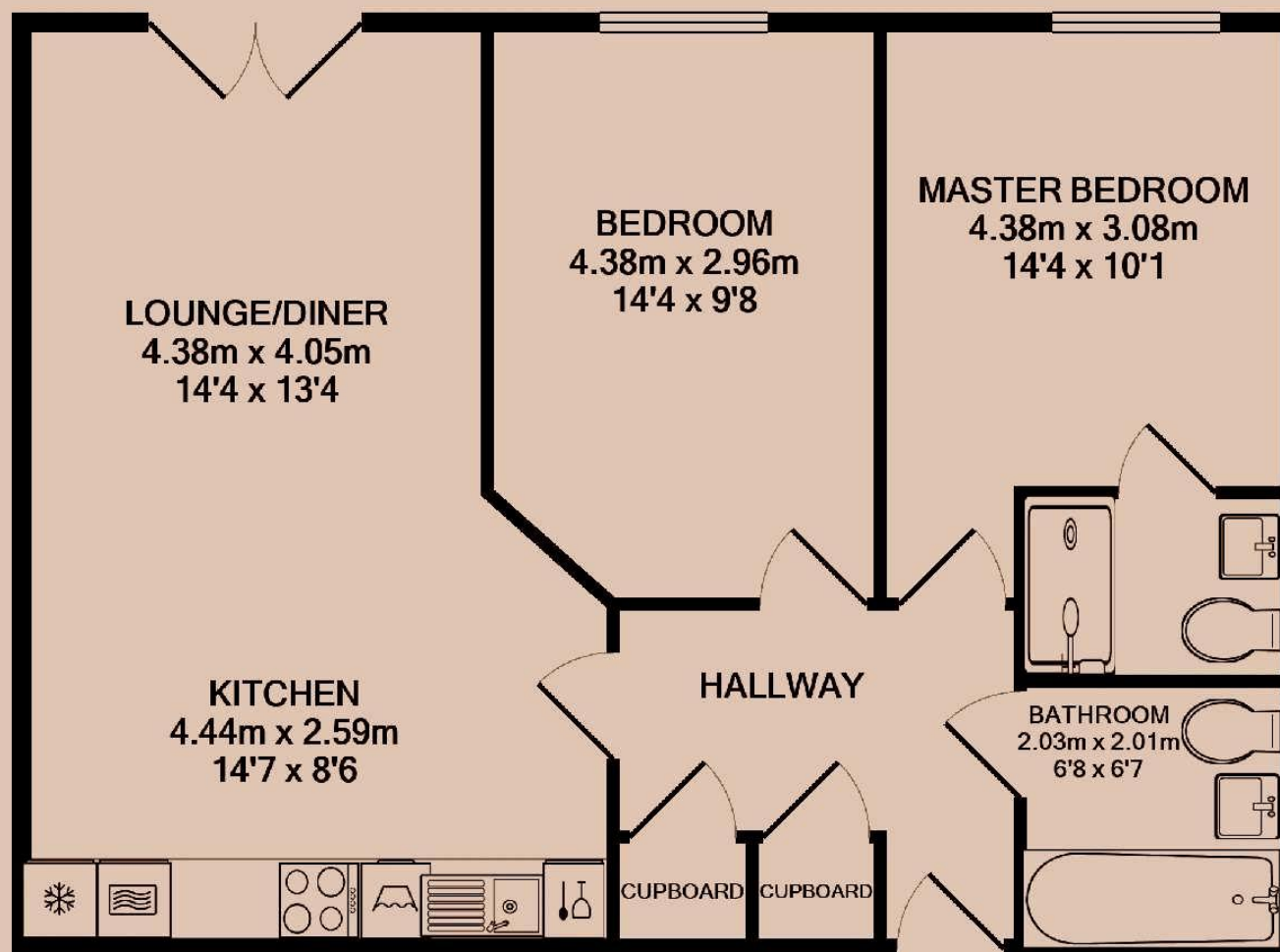
Deposit
£1,580

EPC
84 | B

Council Tax Band
C

ID
#8648

Updated
08/05/2025



Have a property like this? Let's work together.

Design and marketing are at the heart of our approach. With most people now looking for property online, we can get our clients' properties in front of as many people as the most prominent national agents. Where we differ is in the quality of our work. We create stunning digital particulars that highlight the individual attributes of every property we market, with videos and floor plans as standard.



OUR OFFICE
7 Biggin Street
Loughborough, LE11 1UA

CONTACT US
01509 320 320
let@huntleys.net

