

A bright, modern living room with light-colored walls and a wooden floor. A large grey sectional sofa with several cushions is positioned in the foreground. To the left, a dining table with four chairs is visible. In the background, a kitchen area with wooden cabinets and a white refrigerator is partially seen. A large window on the left wall provides natural light. A decorative pendant light hangs from the ceiling, and a long black shelf with small decorative items is mounted on the right wall.

Goods Yard Close

Loughborough

2 Bed 1st Floor Apartment • LE11 5EB • £900 pcm • £1,030 Deposit



Energy Performance

TBC

Goods Yard Close, Loughborough

Soon available to let in Loughborough. A top floor, two bedroom apartment situated close to the town centre. This furnished apartment comes with a sizeable lounge, open to the kitchen, a primary bathroom, and two double bedrooms. Allocated parking for one car is available within the block car park.

Lounge / Diner

A large living space, that can be used as a lounge and diner. Running the full depth of the apartment, this room is open to the kitchen. Furniture included.

Kitchen

A practical U-shaped kitchen, this kitchen comes equipped with a fridge/freezer, washing machine, oven, and hob.

Master Bedroom

A double bedroom, including a built-in wardrobe and furniture.

Bedroom Two

A second double bedroom, including furniture.

Bathroom

A neutral, three-piece bathroom, including a bath, sink, toilet, and shower above the bath.

Parking

Allocated parking available for one car in the block car park.

Heating

Electric heating throughout.

Glazing

Modern, good quality, uPVC double glazing.

We aim to make our particulars both accurate and reliable. However they are not guaranteed; nor do they form part of an offer or contract. If you require clarification on any points then please contact us, especially if you are traveling some distance to view. All measurements are to widest point.



Lounge / Diner



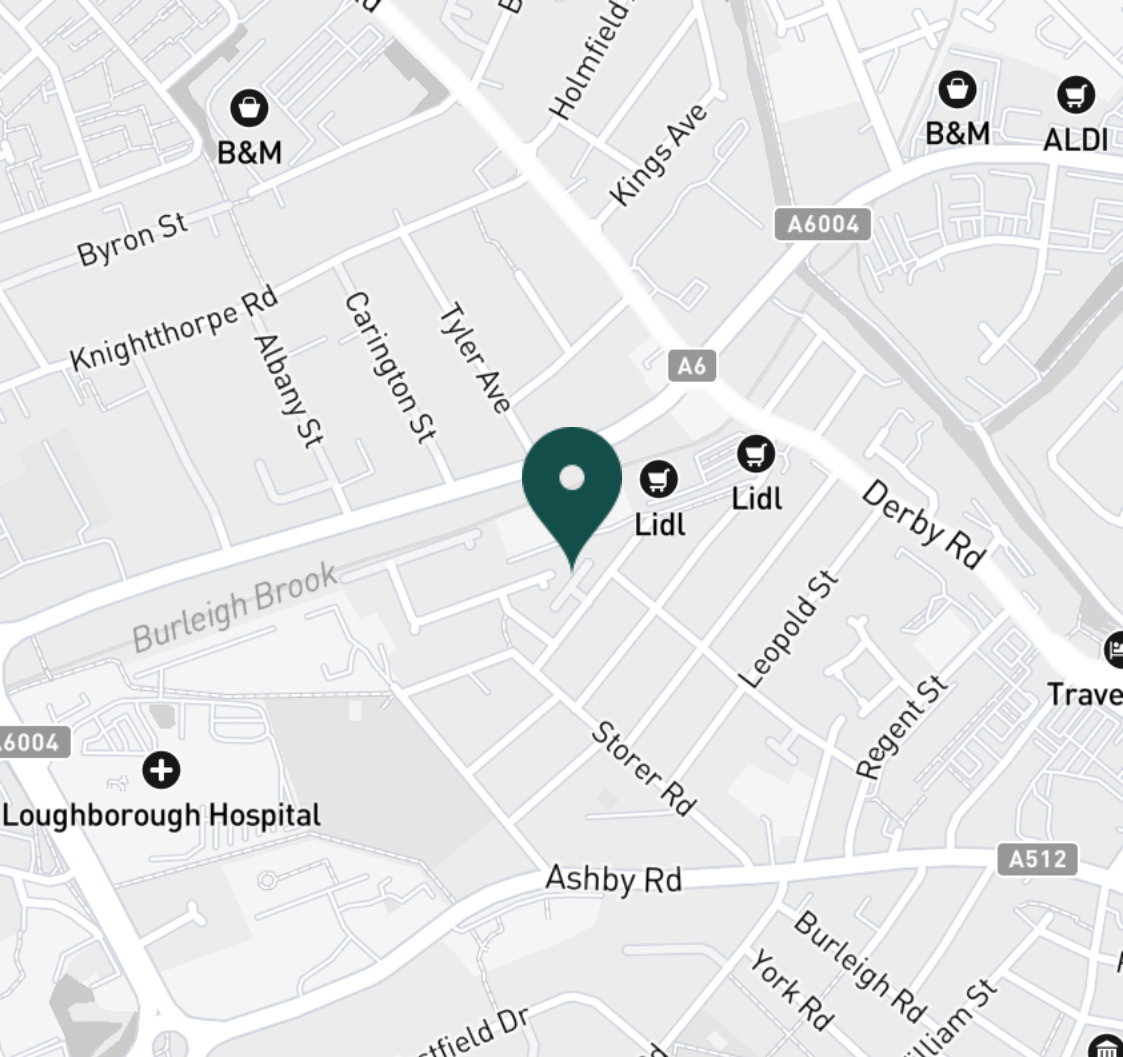
Lounge / Diner



Kitchen



Kitchen



SUPERMARKETS

Lidl Loughborough	0.2 mi
Tesco Superstore Loughborough	0.6 mi
Aldi Loughborough	0.6 mi
Marks & Spencer	0.7 mi
Sainsburys Loughborough	0.7 mi

GYMS

Anytime Fitness Loughborough	0.5 mi
PureGym Loughborough	0.6 mi
CrossFit Loughborough	1.0 mi
Dynamite Gym Ltd	1.1 mi
Loughborough University Pool	1.3 mi

TRAIN STATIONS

Loughborough	1.4 mi
Barrow upon Soar	4.4 mi
Sileby	6.3 mi
East Midlands Parkway	9.6 mi
Syston	10.6 mi

NURSERY SCHOOLS

Busy Bees in Loughborough	0.5 mi
Kingscliffe Day Nursery	0.5 mi
Babblebrooke Day Nursery	0.6 mi
Small World Nursery	0.7 mi
Little House Day Nursery	1.0 mi

PRIMARY SCHOOLS

St Marys Catholic PS	0.6 mi
Loughborough CE PS	0.9 mi
Rendell Primary School	1.0 mi
Robert Bakewell PS	1.0 mi
Cobden PS	1.1 mi

HIGH SCHOOLS

Limehurst Academy	0.7 mi
RNIB College Loughborough	0.8 mi
The Garendon High Sch	1.3 mi
De Lisle Catholic Science C	1.3 mi
Loughborough College	1.4 mi

Discover
Loughborough





Master Bedroom



Master Bedroom



Master Bedroom



Bedroom Two



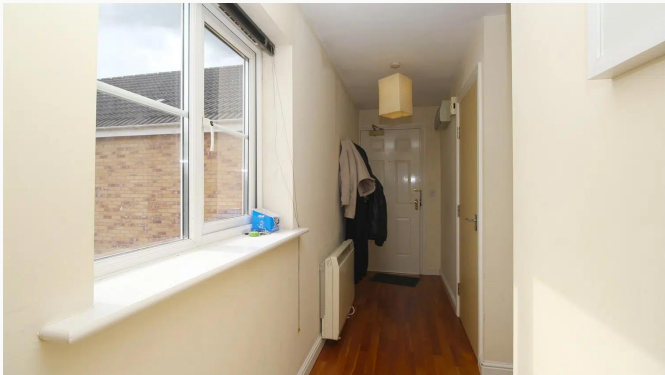
Bedroom Two



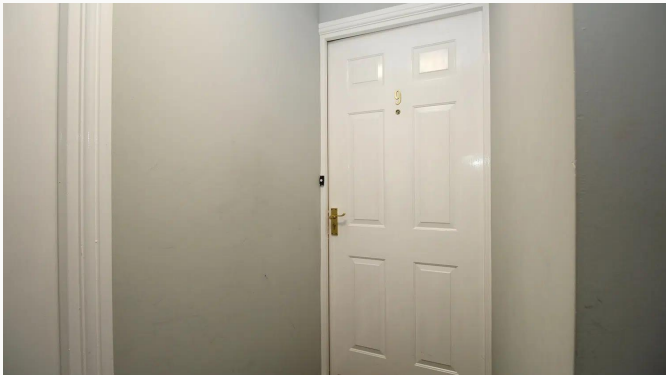
Bedroom Two



Bathroom



Hallway



Entrance



Goods Yard Close

Available
From 21/07/2025

Comes
Furnished

Bedrooms
2

Receptions
1

Bathrooms
1

Parking
Allocated

Postcode
LE11 5EB

Rent
£900 pcm

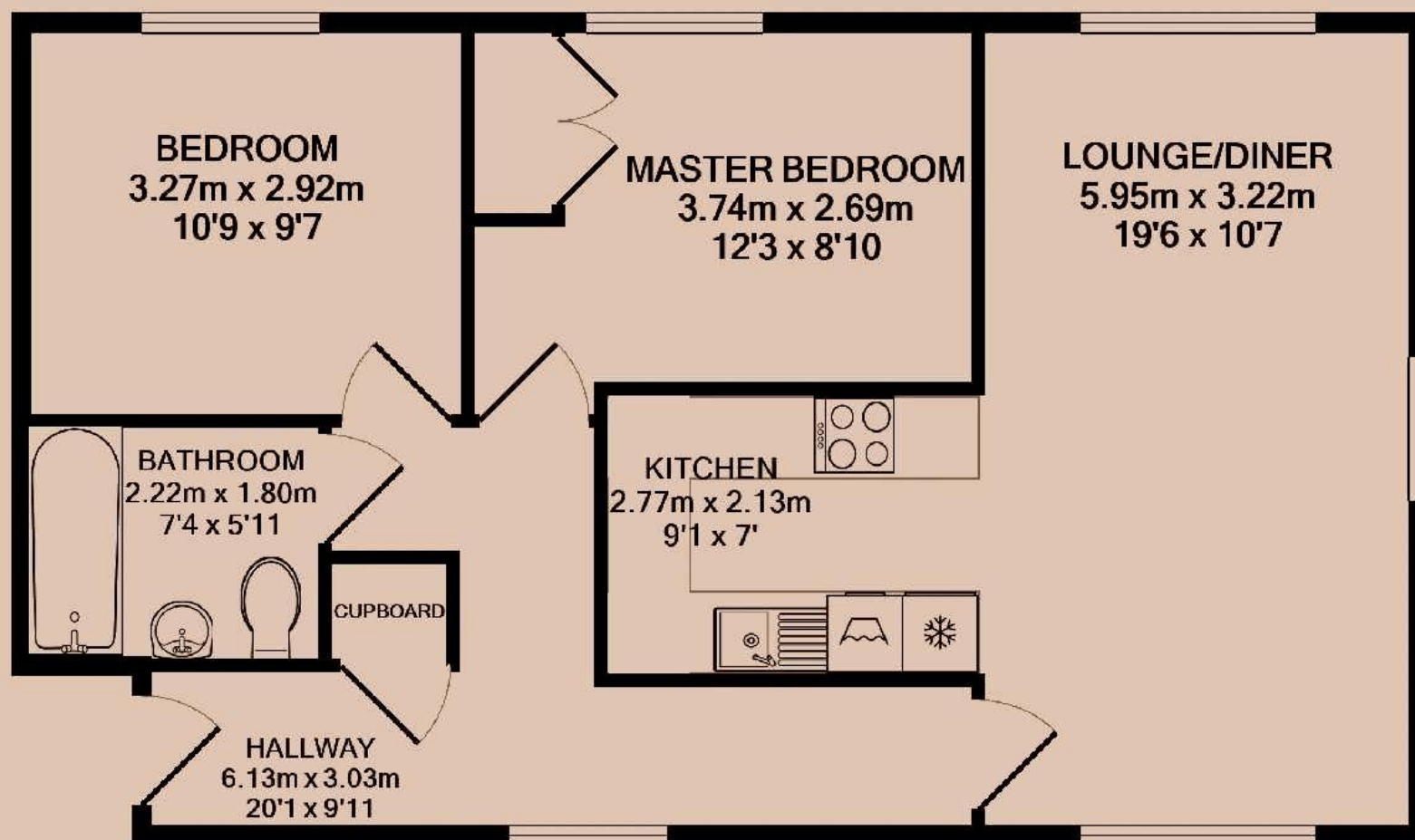
Deposit
£1,030

EPC
Ordered

Council Tax Band
B

ID
#16760

Updated
10/06/2025



Have a property like this? Let's work together.

Design and marketing are at the heart of our approach. With most people now looking for property online, we can get our clients' properties in front of as many people as the most prominent national agents. Where we differ is in the quality of our work. We create stunning digital particulars that highlight the individual attributes of every property we market, with videos and floor plans as standard.



OUR OFFICE
7 Biggin Street
Loughborough, LE11 1UA

CONTACT US
01509 320 320
let@huntleys.net

