



Metro House

Loughborough

1 Bed 3rd Floor Apartment • LE11 1UA • £775 pcm • £890 Deposit



Metro House, Loughborough

This contemporary one bedroom apartment is located in the landmark Rushes development in Loughborough town centre. Located on the third floor it is presented in immaculate condition. It's open plan layout combined with its south facing windows and balcony make for a bright and welcoming space. The apartment is within a short walk of the restaurants and cinema of the new Baxtergate development as well as the mainline station (10 minutes by foot), with buses providing access to the surrounding areas. Secure parking in the Rushes Shopping Centre car park is included.

Kitchen 4m (13'1) x 1.8m (5'11)

Good quality modern kitchen with all the appliances included; washer-dryer, fridge freezer, oven, hob and a dishwasher. Open-plan to the living room.

Living room 5.1m (16'9) x 4m (13'1)

A bright space with south facing Juliet style balcony offering views of the town. Open plan to the kitchen keeps this space sociable.

Bedroom 3.8m (12'6) x 3m (9'10)

A good size double bedroom with south facing window with views over the town.

Bathroom 2.5m (8'2) x 1.8m (5'11)

Modern three piece bathroom suite complete with shower over the bath and heated towel rail. High grade tiling completes the look.

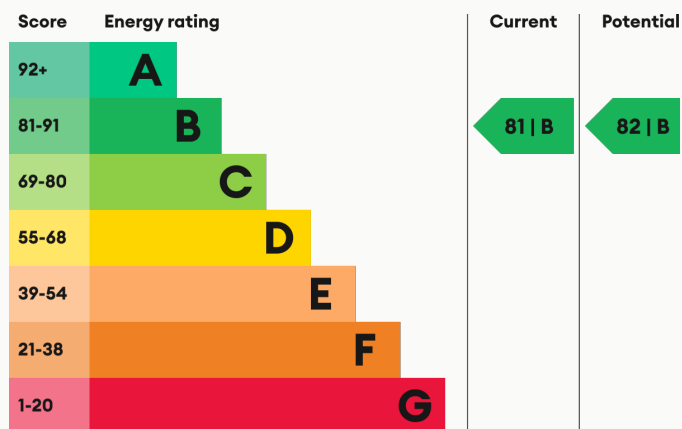
Parking

Secure parking for one car in the Rushes Shopping Centre.

Glazing

Modern, good quality, uPVC double glazing.

Energy Performance



We aim to make our particulars both accurate and reliable. However they are not guaranteed; nor do they form part of an offer or contract. If you require clarification on any points then please contact us, especially if you are traveling some distance to view. All measurements are to widest point.



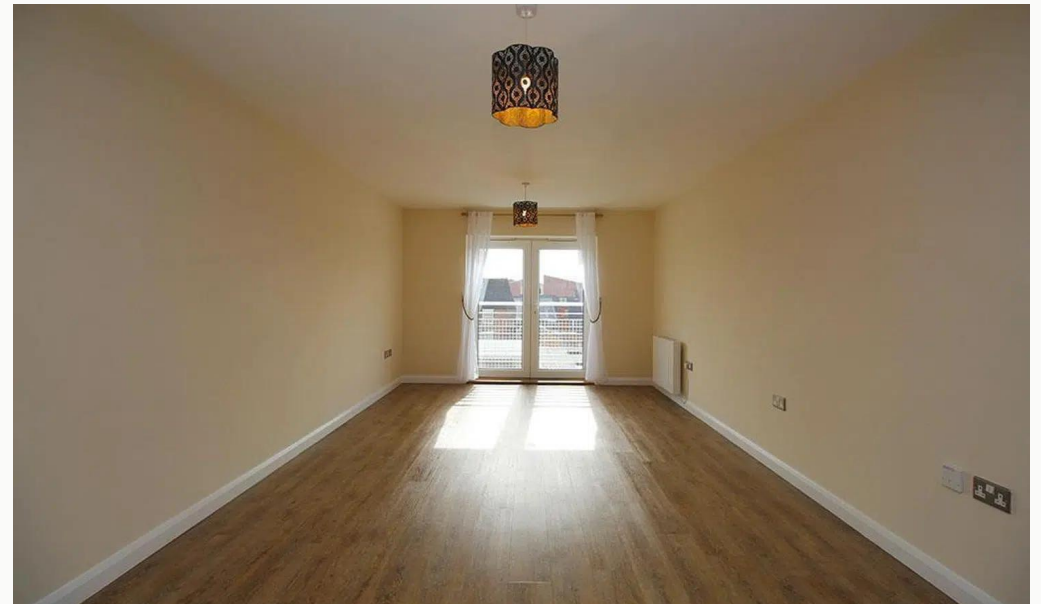
Kitchen



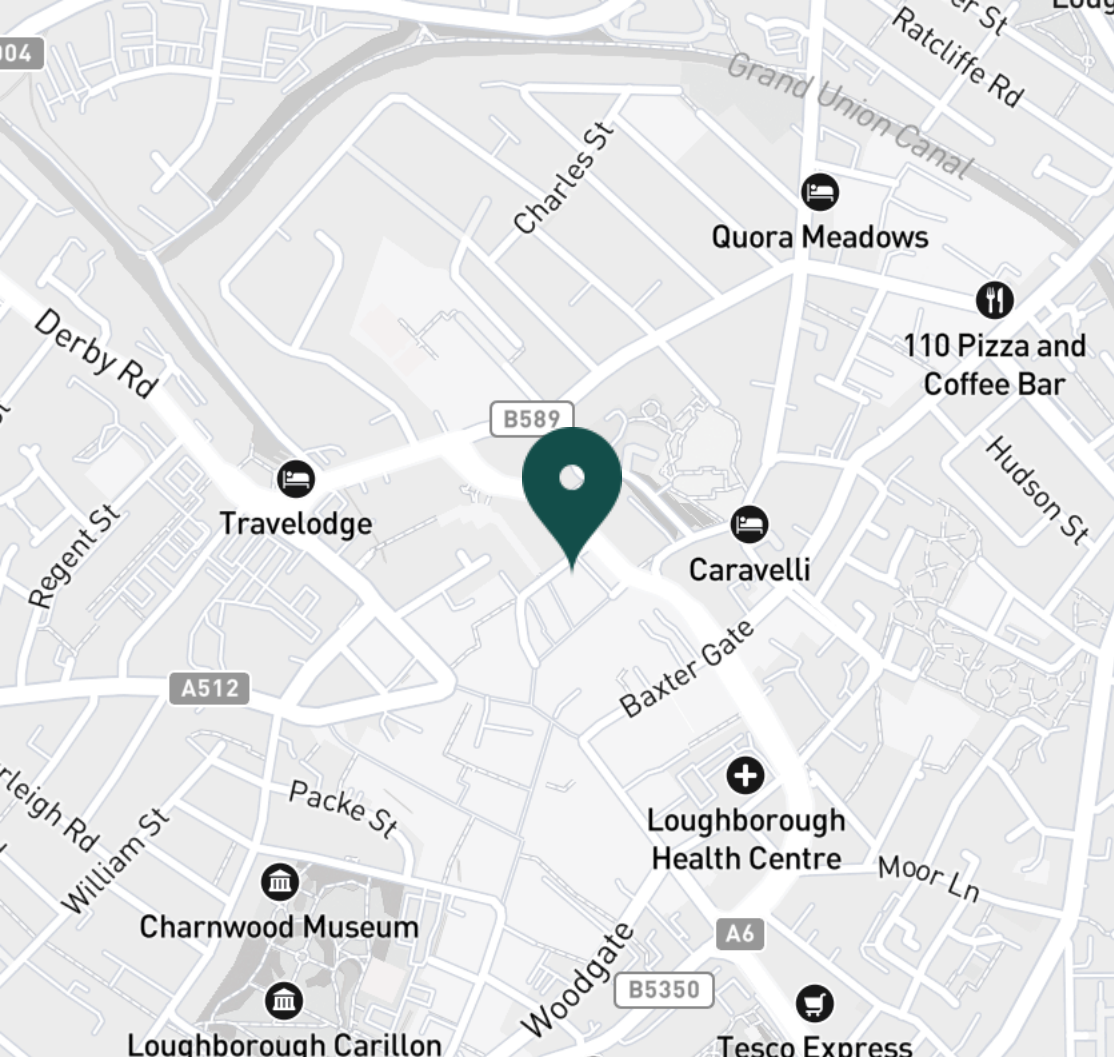
Kitchen



Living Area



Living Area



SUPERMARKETS

Marks & Spencer	0.1 mi
Tesco Superstore Loughborough	0.3 mi
Lidl Loughborough	0.6 mi
Sainsburys Loughborough	0.7 mi
Aldi Loughborough	1.0 mi

GYMS

PureGym Loughborough	0.1 mi
Anytime Fitness Loughborough	0.3 mi
Dynamite Gym Ltd	0.4 mi
CrossFit Loughborough	0.5 mi
Fit4Less	0.7 mi

TRAIN STATIONS

Loughborough	0.9 mi
Barrow upon Soar	3.8 mi
Sileby	5.6 mi
Syston	9.7 mi
East Midlands Parkway	10.0 mi

NURSERY SCHOOLS

Babblebrooke Day Nursery	0.2 mi
Cobden Childrens Centre	0.4 mi
Small World Nursery	0.6 mi
Lime Tree Nursery	0.6 mi
Emmanuel PS	0.8 mi

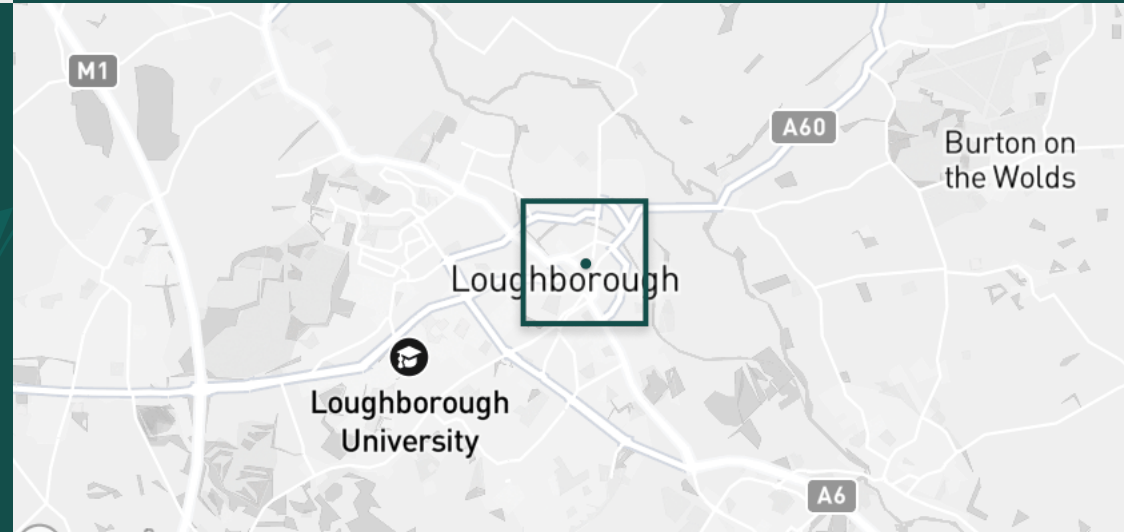
PRIMARY SCHOOLS

Cobden PS	0.5 mi
Rendell Primary School	0.5 mi
Fairfield Preparatory Sch	0.6 mi
St Marys Catholic PS	0.8 mi
Our Lady's Convent Sch	1.0 mi

HIGH SCHOOLS

Limehurst Academy	0.3 mi
Our Lady's Convent Sch	1.0 mi
Loughborough Grammar Sch	1.0 mi
Loughborough High Sch	1.0 mi
RNIB College Loughborough	1.0 mi

Discover
Loughborough



- ✓ Secure parking
- ✓ Appliances included
- ✓ Central location
- ✓ Video intercom
- ✓ Great views
- ✓ Lift





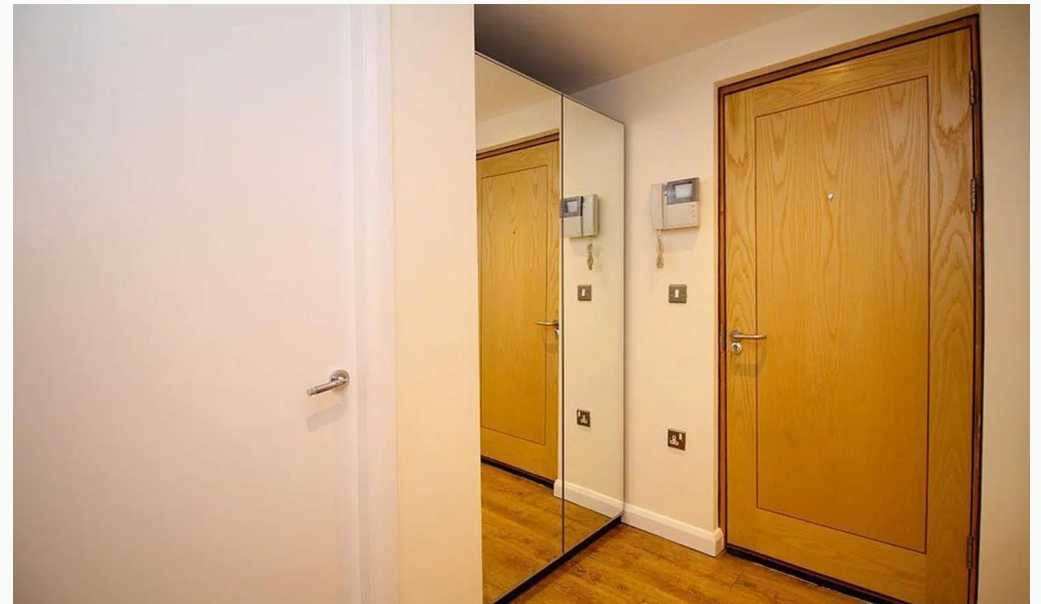
Bedroom



Bedroom



Bedroom



Entrance



Bathroom



Bathroom



Bathroom

Available
From 13/06/2025

Comes
Unfurnished

Bedrooms
1

Receptions
1

Bathrooms
1

Parking
Off road

Postcode
LE11 1UA

Rent
£775 pcm

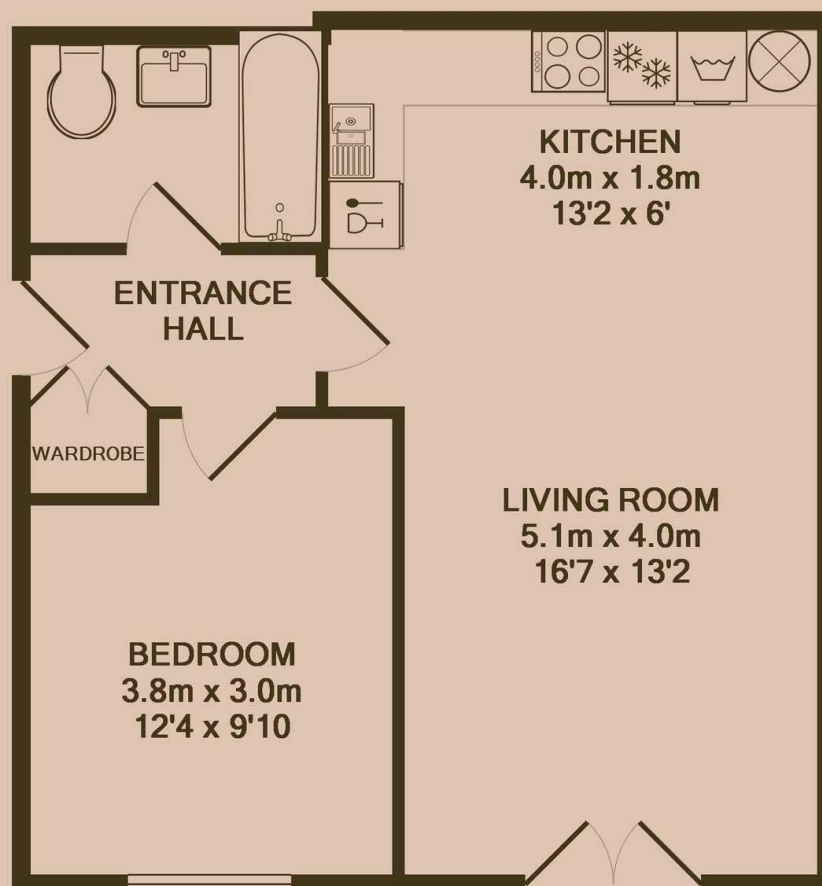
Deposit
£890

EPC
81 | B

Council Tax Band
A

ID
#2657

Updated
13/06/2025



Have a property like this? Let's work together.

Design and marketing are at the heart of our approach. With most people now looking for property online, we can get our clients' properties in front of as many people as the most prominent national agents. Where we differ is in the quality of our work. We create stunning digital particulars that highlight the individual attributes of every property we market, with videos and floor plans as standard.



OUR OFFICE
7 Biggin Street
Loughborough, LE11 1UA

CONTACT US
01509 320 320
let@huntleys.net

