

The image shows the interior of a 1-bedroom apartment. The room features a grey carpeted floor and white walls. A prominent feature is the exposed wooden beam structure, including a large horizontal beam across the top and several diagonal beams supporting the roof. Two dark-colored doors are visible, one on the left and one on the right. A single light fixture hangs from the ceiling. The overall appearance is that of a modern, minimalist living space.

Loughborough Road
Mountsorrel

1 Bed 2nd Floor Apartment • LE12 7AP • £650 pcm • £750 Deposit



Loughborough Road, Mountsorrel

Located within the centre of the sought after village Mountsorrel, an unfurnished one-bedroom apartment, available to let. This second-floor property comes with a quaint kitchen, spacious lounge / diner, double bedroom and bathroom. On street parking available nearby.

Lounge / Diner

A spacious living room, can be used as both lounge and diner. Exposed timber beams and stonewalls complete the look.

Kitchen

An L-shaped kitchen with space for necessary electrical appliances. Please note, vinyl flooring will be installed.

Master Bedroom

A spacious double bedroom, neutral colours and exposed beams completes the look.

Bathroom

A bright bathroom, accessed via the lounge/diner. Includes a bath, sink and toilet.

Parking

On street parking available on Loughborough Road and nearby streets.

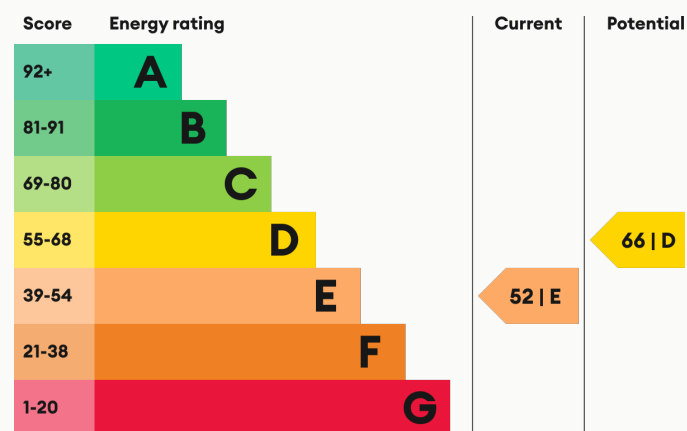
Heating

Gas-fired central heating.

Glazing

Modern, good quality, uPVC double glazing.

Energy Performance



We aim to make our particulars both accurate and reliable. However they are not guaranteed; nor do they form part of an offer or contract. If you require clarification on any points then please contact us, especially if you are traveling some distance to view. All measurements are to widest point.



Lounge / Diner



Lounge / Diner



Lounge / Diner



Lounge / Diner



SUPERMARKETS

Waitrose Mountsorrel	0.8 mi
Co-op Food Quorn	1.7 mi
Co-op Food Barrow Upon Soar	2.6 mi
Tesco Extra Loughborough	4.3 mi
Co-op Food Birstall	4.9 mi

GYMS

Onestep fitness	0.6 mi
bofitness	0.9 mi
Soar Valley Leisure Centre	0.9 mi
Quorn Grange Hotel	1.4 mi
Rosemary Conley Fitness Club	1.6 mi

TRAIN STATIONS

Sileby	1.6 mi
Barrow upon Soar	2.7 mi
Loughborough	5.4 mi
Syston	6.8 mi
South Wigston	7.0 mi

NURSERY SCHOOLS

Castle View Day Nursery	0.2 mi
Rothley Park Kindergarten	1.0 mi
Quorn Grange Day Nursey	1.5 mi
Quorn Nursery School	1.6 mi
Sileby Littlestars PS	1.6 mi

PRIMARY SCHOOLS

Christ Church & St Peters CE	0.5 mi
Redlands Community PS	1.8 mi
St Bartholomew's CE PS	2.1 mi
Rothley CE PS	2.1 mi
Highcliffe PS	2.3 mi

HIGH SCHOOLS

Rawlins Academy	1.6 mi
Humphrey Perkins High Sch	3.0 mi
Ratcliffe College	3.4 mi
Loughborough Grammar Sch	4.4 mi
Loughborough High Sch	4.5 mi

Discover
Mountsorrel

Loughborough
University



- ✓ One Bedroom Apartment
- ✓ Mountsorrel
- ✓ Available Now
- ✓ Second Floor
- ✓ Character Features
- ✓ Unfurnished





Kitchen



Kitchen



Master Bedroom



Master Bedroom



Master Bedroom



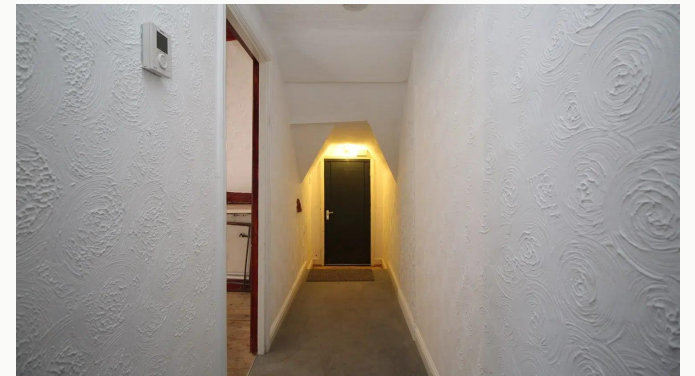
Bathroom



Bathroom



Bathroom



Hallway



Loughborough Road



Entrance



Entrance

Available
From 19/06/2025

Comes
Unfurnished

Bedrooms
1

Receptions
1

Bathrooms
1

Parking
On Street

Postcode
LE12 7AP

Rent
£650 pcm

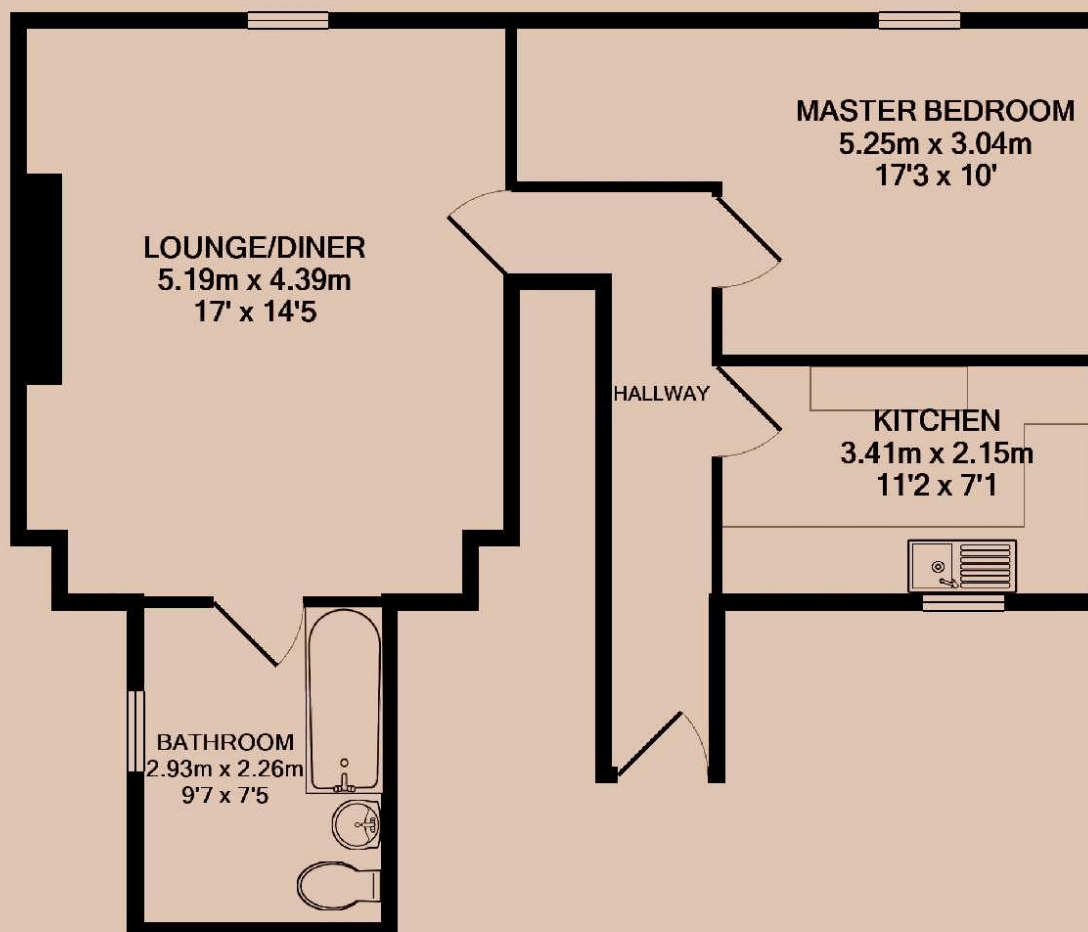
Deposit
£750

EPC
52 | E

Council Tax Band
A

ID
#10898

Updated
29/05/2026



Have a property like this? Let's work together.

Design and marketing are at the heart of our approach. With most people now looking for property online, we can get our clients' properties in front of as many people as the most prominent national agents. Where we differ is in the quality of our work. We create stunning digital particulars that highlight the individual attributes of every property we market, with videos and floor plans as standard.



OUR OFFICE
7 Biggin Street
Loughborough, LE11 1UA

CONTACT US
01509 320 320
let@huntleys.net



Huntleys

