



The Wharf
Loughborough

1 Bed Top Floor Apartment • LE11 1GN • £1,175 pcm • £1,350 Deposit



The Wharf, Loughborough

Soon available to let at The Wharf, in The Waterside Village. Set in the highest specification development that Loughborough has to offer. This premium, one bedroom top-floor apartment is ready for its first occupation. In the developer's own words, "Residents can enjoy waterside living at its best, with free access to The Wharf's gymnasium, fitness studio, communal office space, rooftop terrace and concierge service. Each apartment comes with allocated parking space(s) and The Wharf offers easy access to Loughborough's town centre and train station. The Waterside Village offers the perfect live, work and play living experience". PLEASE NOTE: Photos and video tour are of a different apartment within the same block. Floorplan is of actual apartment.

Lounge / Diner

Contemporary living area that is open plan to the kitchen and runs the full depth of the apartment.

Kitchen

A Pullman kitchen in charcoal with matching worktop and brick-bond tiling. Hidden away behind the smart cabinets, there are all the integrated appliances, including a fridge-freezer, dual ovens, washer-dryer, easy-clean hob and a dishwasher - open plan to the living area.

Bedroom

Elegant and spacious double bedroom featuring floor-to-ceiling window. Wood effect flooring and exposed brick completes the look.

Bathroom

This beautiful four-piece bathroom comes complete with a separate shower, heated towel rail and shaving point. Classic, brick-bond tiling completes the look.

Rooftop Terrace

For The Wharf residents to enjoy a stunning rooftop terrace overlooking Loughborough and the countryside.

Gym

Residents have use of a communal gymnasium, including high-spec equipment.

Parking

Allocated parking within The Waterside Village gated car park.

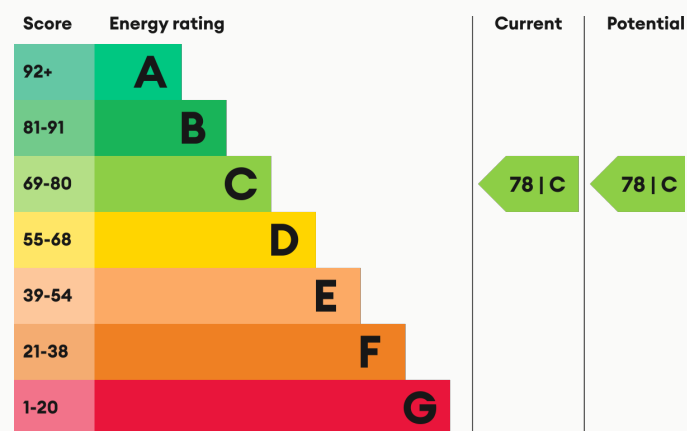
Heating

Central heating throughout.

Glazing

Modern, good quality, uPVC double glazing.

Energy Performance



We aim to make our particulars both accurate and reliable. However they are not guaranteed; nor do they form part of an offer or contract. If you require clarification on any points then please contact us, especially if you are traveling some distance to view. All measurements are to widest point.



Lounge / Diner



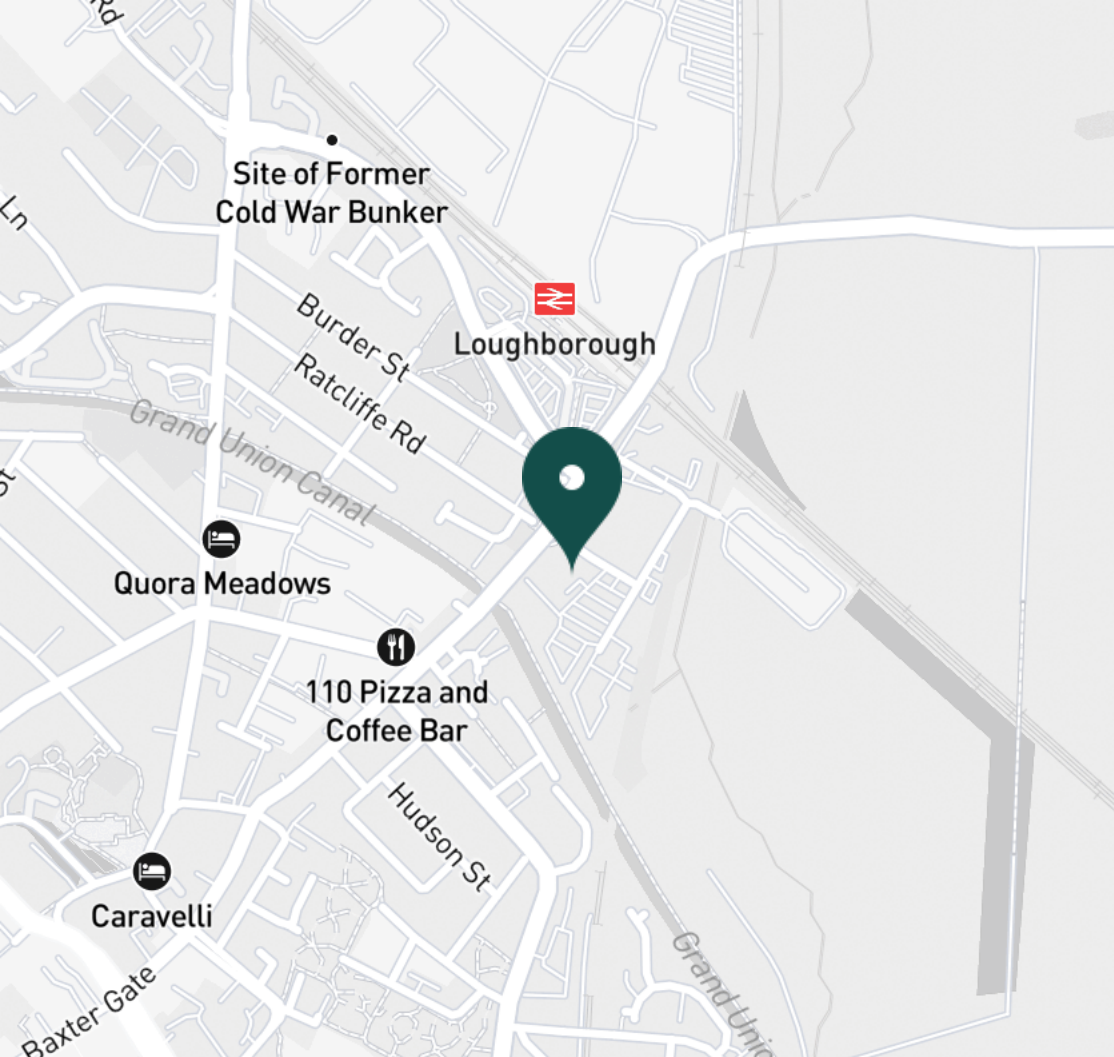
Kitchen



Kitchen



Kitchen



SUPERMARKETS

| | |
|-------------------------------|--------|
| Tesco Superstore Loughborough | 0.8 mi |
| Marks & Spencer | 0.9 mi |
| Aldi Loughborough | 0.9 mi |
| Lidl Loughborough | 1.0 mi |
| Sainsburys Loughborough | 1.1 mi |

GYMS

| | |
|------------------------------|--------|
| CrossFit Loughborough | 0.4 mi |
| PureGym Loughborough | 0.6 mi |
| Anytime Fitness Loughborough | 0.7 mi |
| Dynamite Gym Ltd | 0.7 mi |
| NPC Performance Centre | 0.9 mi |

TRAIN STATIONS

| | |
|-----------------------|---------|
| Loughborough | 0.3 mi |
| Barrow upon Soar | 3.8 mi |
| Sileby | 5.9 mi |
| Syston | 10.2 mi |
| East Midlands Parkway | 10.4 mi |

NURSERY SCHOOLS

| | |
|--------------------------|--------|
| Cobden Childrens Centre | 0.5 mi |
| Babblebrooke Day Nursery | 0.6 mi |
| Lime Tree Nursery | 0.8 mi |
| Small World Nursery | 1.0 mi |
| Emmanuel PS | 1.1 mi |

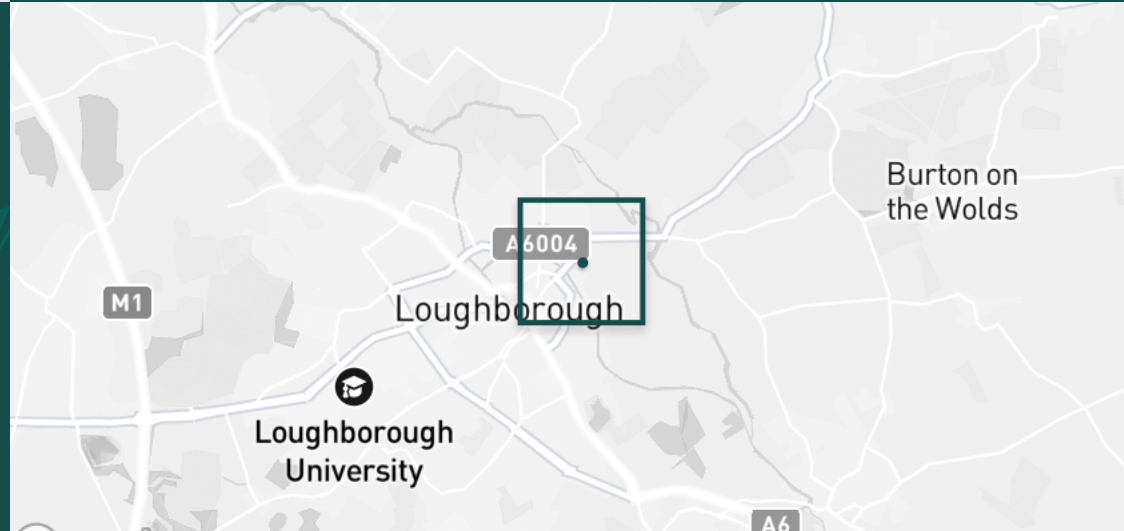
PRIMARY SCHOOLS

| | |
|---------------------------|--------|
| Rendell Primary School | 0.4 mi |
| Cobden PS | 0.8 mi |
| Fairfield Preparatory Sch | 0.9 mi |
| St Marys Catholic PS | 1.2 mi |
| Our Lady's Convent Sch | 1.3 mi |

HIGH SCHOOLS

| | |
|---------------------------|--------|
| Limehurst Academy | 0.5 mi |
| Our Lady's Convent Sch | 1.3 mi |
| Loughborough High Sch | 1.3 mi |
| RNIB College Loughborough | 1.4 mi |
| Loughborough Grammar Sch | 1.6 mi |

Discover
Loughborough



- ✓ Top-floor Apartment
- ✓ High-spec Gymnasium
- ✓ Rooftop Terrace
- ✓ One Bedroom Apartment
- ✓ Four-piece Bathroom
- ✓ Allocated Parking





Lounge / Diner



Lounge / Diner



Lounge / Diner



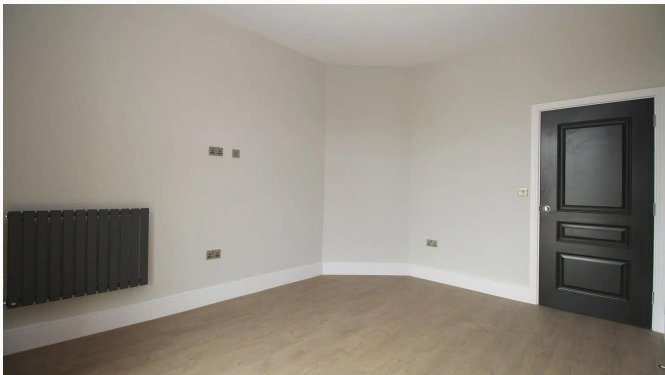
Lounge / Diner



Lounge / Diner



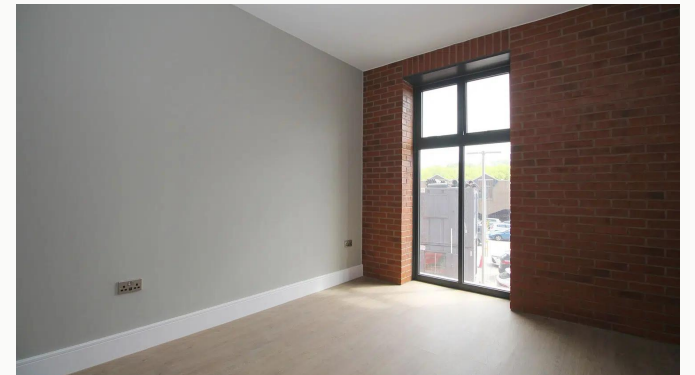
Bedroom



Bedroom



Bedroom



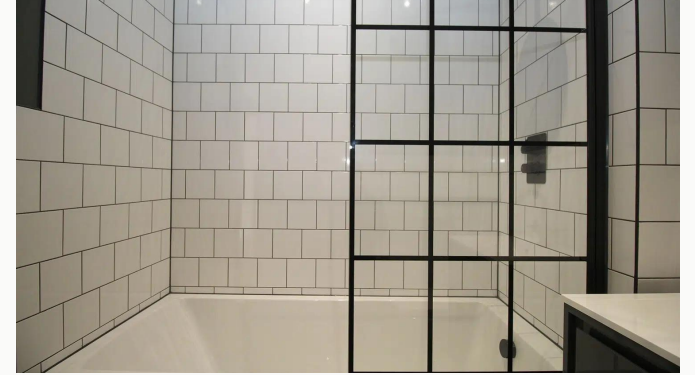
Bedroom



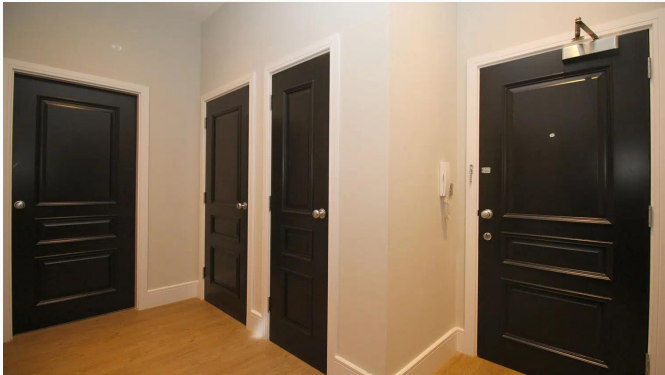
Bathroom



Bathroom



Bathroom



Hallway



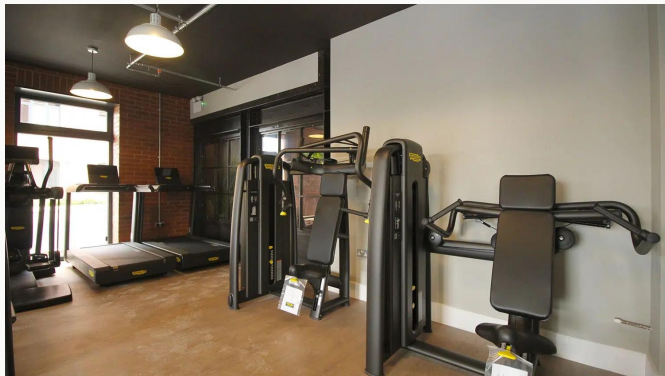
Gym



Gym



Gym



Gym



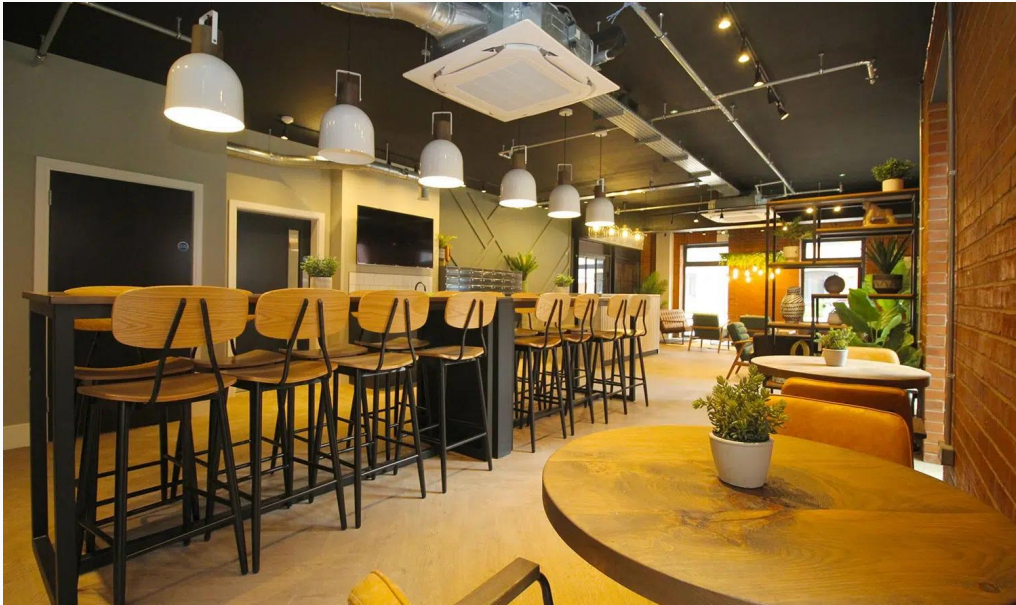
Fitness Studio



Fitness Studio



Reception



Reception



Reception



Reception



Rooftop Terrace



Rooftop Terrace



Rooftop Terrace

Available
From 30/06/2026

Comes
Unfurnished

Bedrooms
1

Receptions
1

Bathrooms
1

Parking
Allocated

Postcode
LE11 1GN

Rent
£1,175 pcm

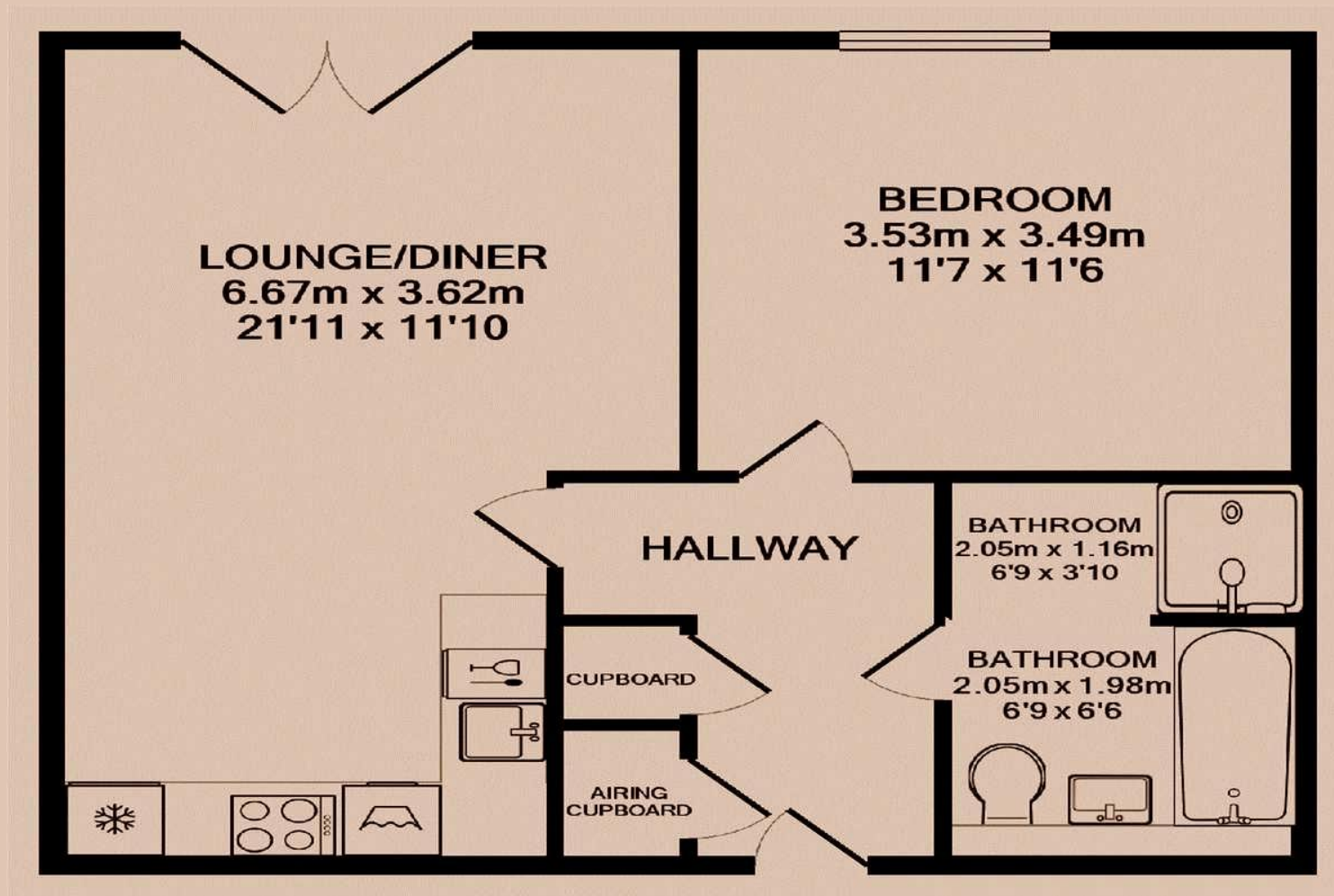
Deposit
£1,350

EPC
78 | C

Council Tax Band
B

ID
#10703

Updated
28/05/2026



Have a property like this? Let's work together.

Design and marketing are at the heart of our approach. With most people now looking for property online, we can get our clients' properties in front of as many people as the most prominent national agents. Where we differ is in the quality of our work. We create stunning digital particulars that highlight the individual attributes of every property we market, with videos and floor plans as standard.



OUR OFFICE
7 Biggin Street
Loughborough, LE11 1UA

CONTACT US
01509 320 320
let@huntleys.net

