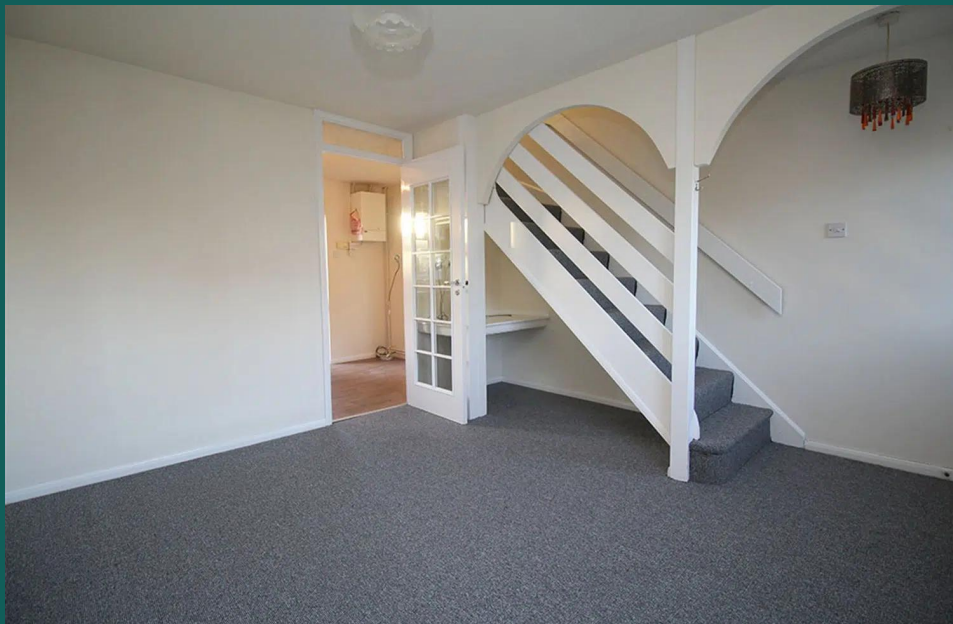




# *Ash Grove*

Hathern

2 Bed Semi-Detached House • LE12 5LW • £850 pcm • £980 Deposit



#### Energy Performance

TBC

## *Ash Grove, Hathern*

This charming two-bedroom semi-detached home in the sought-after village of Hathern is available to let. The property features a bright and spacious lounge, a modern fitted kitchen, and garden. Upstairs, there is a spacious double bedroom and a second single bedroom. The home also benefits from driveway parking and is situated on a quiet cul-de-sac.

#### Lounge

Bright; spacious lounge area, with an open staircase, light decor, and carpet.

#### Kitchen

A smart fitted kitchen with a gas hob, fan oven, and space for additional appliances.

#### Master Bedroom

A bright and spacious double room, overlooking the quiet cul-de-sac.

#### Bedroom Two

A single room located at the back of the property overlooking the rear garden.

#### Bathroom

A tiled first-floor bathroom, fitted with a three-piece suite and a shower over the bath.

#### Garden

A sizeable and low maintenance garden area, with gate access leading to the side of the property.

#### Parking

Driveway Parking.

#### Heating

Gas-fired central heating.

#### Glazing

Modern, good quality, uPVC double glazing.

We aim to make our particulars both accurate and reliable. However they are not guaranteed; nor do they form part of an offer or contract. If you require clarification on any points then please contact us, especially if you are traveling some distance to view. All measurements are to widest point.





Lounge



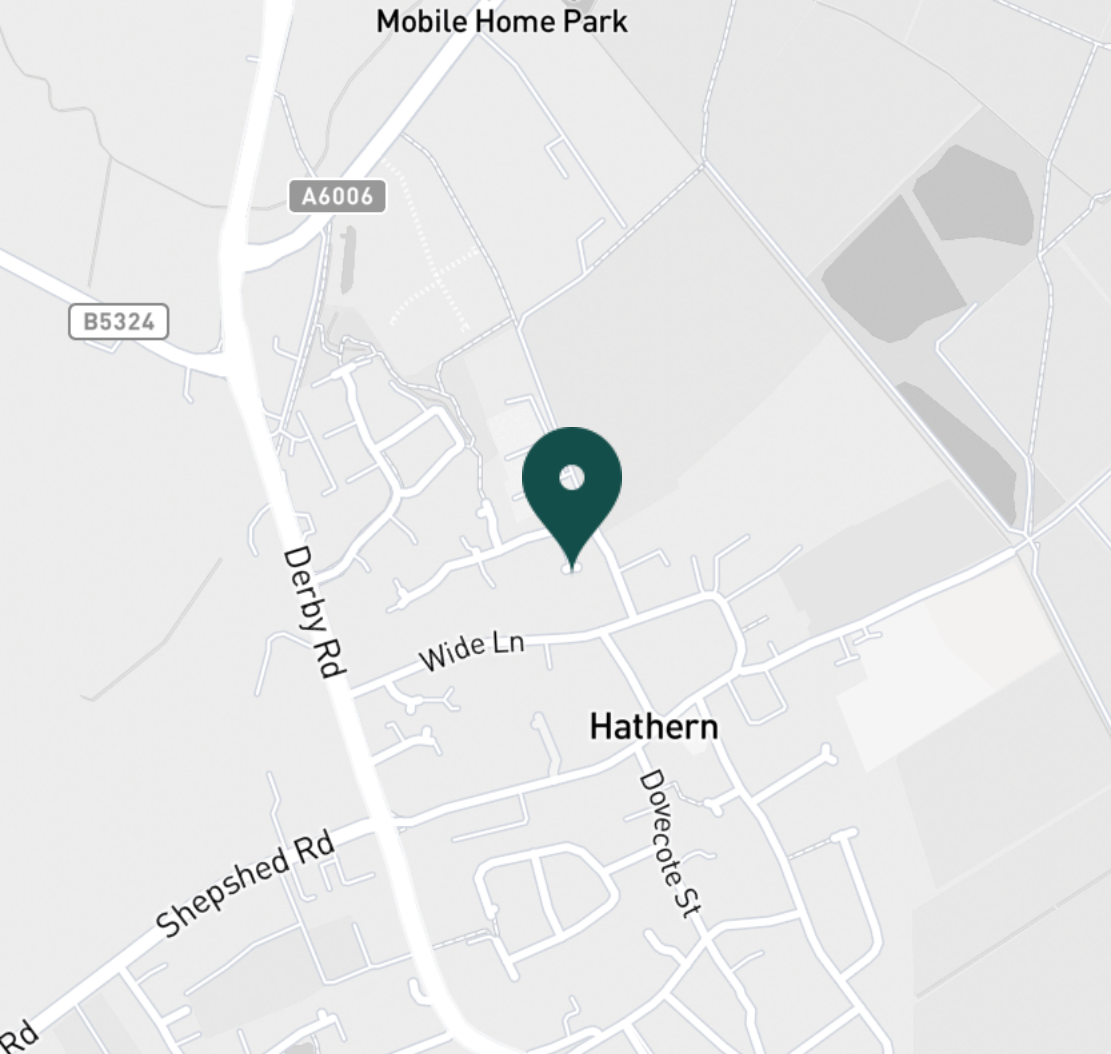
Lounge



Kitchen



Kitchen



#### SUPERMARKETS

Co-op Food Hall Croft	2.7 mi
Asda Shepshed	2.8 mi
Co-op Food Knightthorpe Rd	2.9 mi
Lidl Loughborough	2.9 mi
Morrisons Loughborough	2.9 mi

#### GYMS

Viking Fitness Centre	0.5 mi
Stable Fitness	2.7 mi
Anytime Fitness Loughborough	3.1 mi
Punchin Pandas Children's Martial Arts	3.1 mi
PureGym Loughborough	3.3 mi

#### TRAIN STATIONS

Loughborough	3.9 mi
Barrow upon Soar	7.1 mi
East Midlands Parkway	7.3 mi
Sileby	9.0 mi
Long Eaton	9.4 mi

#### NURSERY SCHOOLS

Moors Farm Day Nursery	0.8 mi
Robert Bakewell Playgroup	2.5 mi
Children 1st Shepshed	2.8 mi
The Oak Treehouse	2.8 mi
Hind Leys PS	2.8 mi

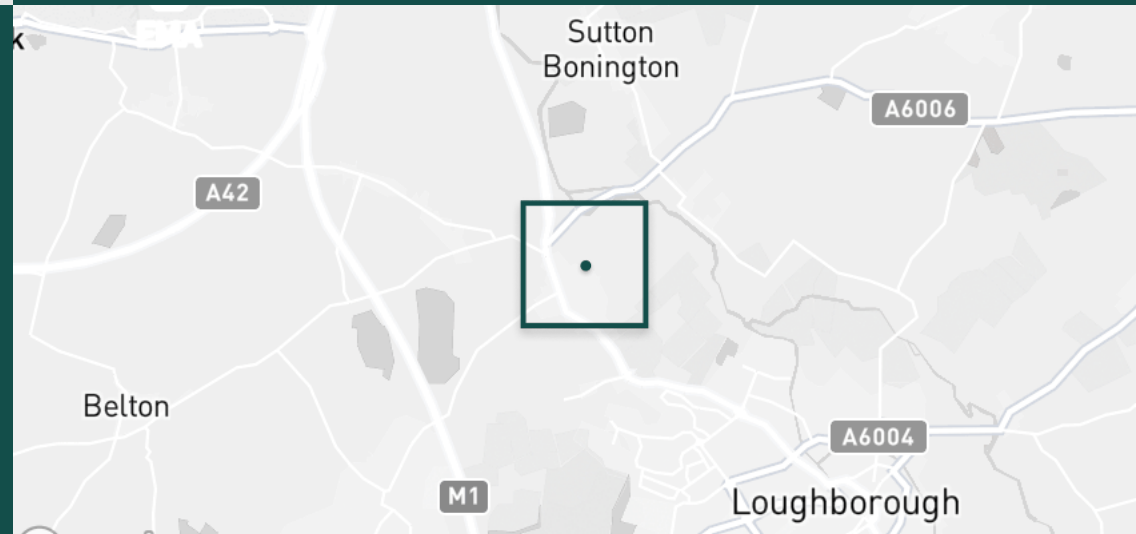
#### PRIMARY SCHOOLS

Long Whatton CE PS	1.7 mi
Sutton Bonington PS	2.4 mi
Robert Bakewell PS	2.5 mi
St Winefrides Catholic PS	2.6 mi
St Botolphs CE PS	2.7 mi

#### HIGH SCHOOLS

Hind Leys Community College	2.8 mi
Shepshed High Sch	2.9 mi
Limehurst Academy	3.3 mi
Charnwood College	3.5 mi
The Garendon High Sch	3.6 mi

Discover  
*Hathern*





- ✓ Hathern
- ✓ Driveway Parking
- ✓ Quiet Village
- ✓ Available Now
- ✓ Garden
- ✓ Gas-fired central heating.

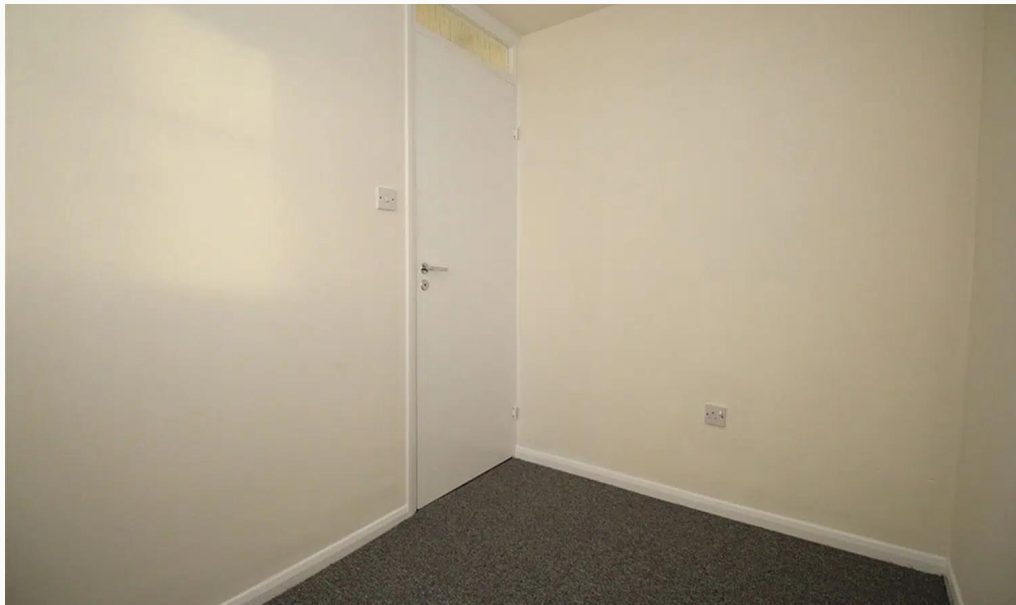




Master Bedroom



Master Bedroom



Bedroom Two



Bedroom Two





Bathroom



Garden



Back of Property

**Available**  
From 19/12/2025

**Comes**  
Unfurnished

**Bedrooms**  
2

**Receptions**  
1

**Bathrooms**  
1

**Parking**  
Driveway

**Postcode**  
LE12 5LW

**Rent**  
£850 pcm

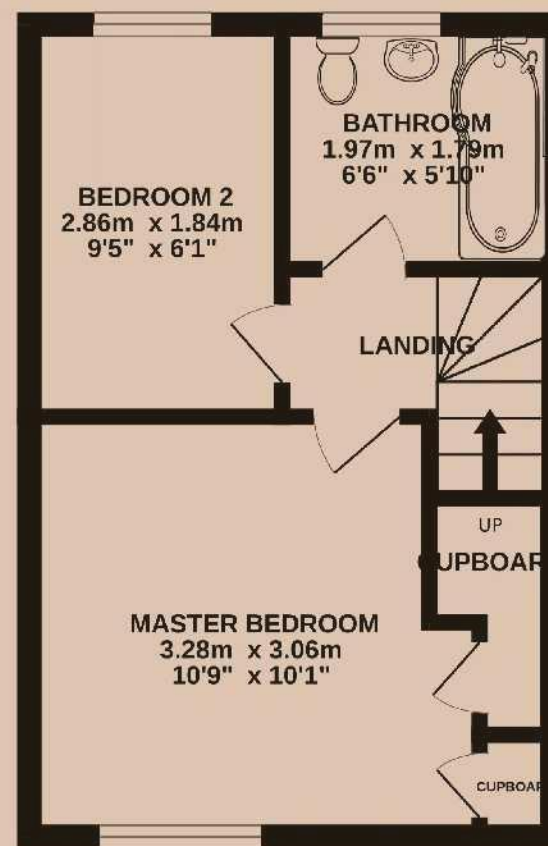
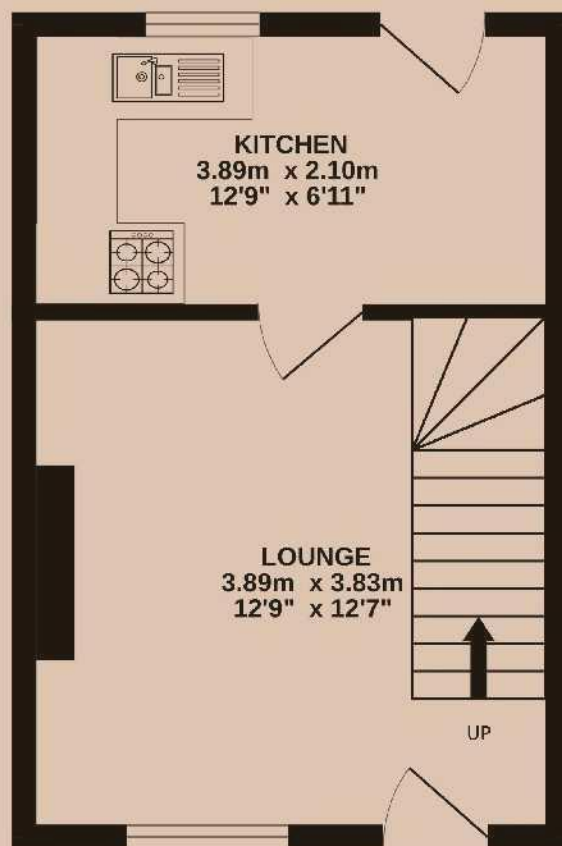
**Deposit**  
£980

**EPC**  
Ordered

**Council Tax Band**  
B

**ID**  
#17739

**Updated**  
19/12/2025





# *Have a property like this? Let's work together.*

Design and marketing are at the heart of our approach. With most people now looking for property online, we can get our clients' properties in front of as many people as the most prominent national agents. Where we differ is in the quality of our work. We create stunning digital particulars that highlight the individual attributes of every property we market, with videos and floor plans as standard.



**OUR OFFICE**  
7 Biggin Street  
Loughborough, LE11 1UA

**CONTACT US**  
01509 320 320  
let@huntleys.net

