

The image shows a bright, modern kitchen interior. The walls are painted a vibrant blue, and the floor is covered in light-colored wood-look laminate. On the left, a large window with white frames looks out onto a green garden. Below the window is a light wood breakfast bar with a dark countertop. In the background, the kitchen features light wood cabinets with glass-fronted upper units and a dark countertop. A white refrigerator stands to the left of the cabinets. A white six-panel door is set into the blue wall on the right. The ceiling is white with a yellow pendant light and a track lighting fixture. The text 'Spinners Way' is written in a large, white, italicized serif font, and 'Shepshed' is written below it in a smaller, white, sans-serif font.

Spinners Way

Shepshed

4 Bed Terraced House • LE12 9NY • £1,150 pcm • £1,320 Deposit



Spinners Way, Shepshed

Soon ready for occupation, a three storey, four-bedroom terraced house situated in Shepshed. This property comes with four bedrooms, three washrooms, sizeable kitchen/diner, lounge with balcony, utility room, garden to the rear, allocated parking and driveway.

Lounge

Set on the first floor overlooking the front of the property, this sizeable lounge comes with French doors to the balcony.

Kitchen / Diner

This room spans the full depth of the property. The kitchen area sits in the middle of the room and includes an integrated dishwasher, free standing cooker with gas hob. This room is also large enough to hold a dining and sitting area. French doors give access to the rear garden.

Utility

A practical utility room set beside the kitchen/diner, this room holds a sink and has external access to the rear garden.

Bathroom

The family bathroom, set on the top floor. This modern washroom comes with a bath, sink, toilet and shower above the bath.

Shower Room

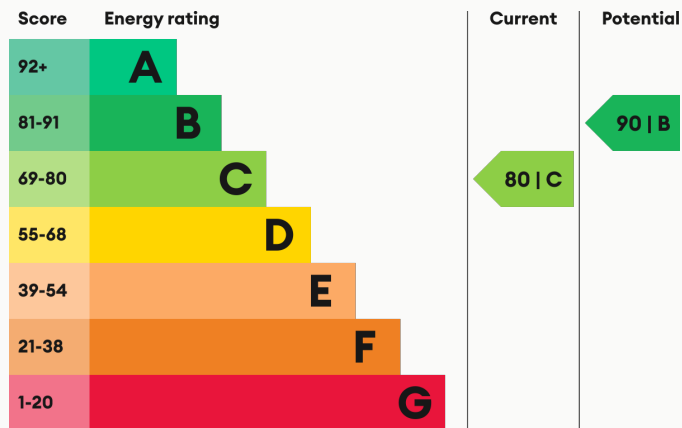
Situated on the ground floor and accessed via the utility room. This shower room comes with a walk-in shower, sink and toilet.

Ensuite

Accessed via the Master Bedroom, an ensuite shower room including a walk-in shower, sink and toilet.

For more information about this property, visit our website huntleys.net.

Energy Performance



Master Bedroom

Set on the first floor, this double bedroom comes with a built-in wardrobe and access to an ensuite shower room.

Bedroom Two

Set on the top floor, this double bedroom boasts similar dimensions to the Master Bedroom.

Bedroom Three

Also set on the top floor, this double bedroom overlooks the front of the property.

Bedroom Four

The fourth bedroom, also set on the first floor, can also be used as a study.

We aim to make our particulars both accurate and reliable. However they are not guaranteed; nor do they form part of an offer or contract. If you require clarification on any points then please contact us, especially if you are traveling some distance to view. All measurements are to widest point.



Kitchen / Diner



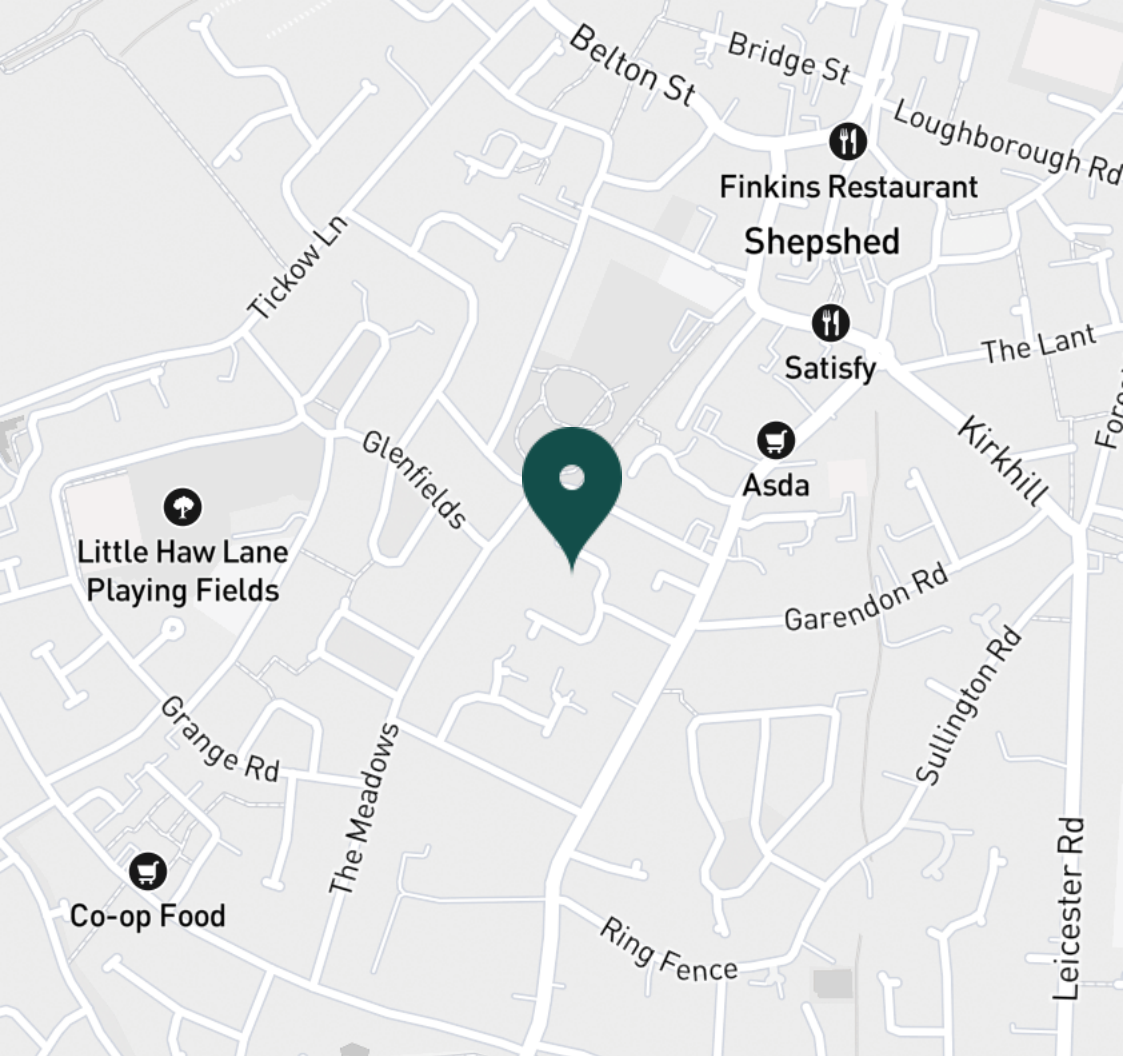
Kitchen / Diner



Kitchen / Diner



Kitchen / Diner



SUPERMARKETS

Asda Shepshed	0.3 mi
Co-op Food Hall Croft	0.6 mi
Co-op Food Anson Rd	0.7 mi
Co-op Food Coalville	3.8 mi
Co-op Food Knightthorpe Rd	4.1 mi

GYMS

Stable Fitness	0.4 mi
Punchin Pandas Children's Martial Arts	0.5 mi
Viking Fitness Centre	2.7 mi
Holywell Fitness Centre	3.3 mi
Burleigh Springs Leisure Club	3.4 mi

TRAIN STATIONS

Loughborough	6.1 mi
Barrow upon Soar	8.2 mi
Sileby	10.1 mi
East Midlands Parkway	10.4 mi
Long Eaton	12.5 mi

NURSERY SCHOOLS

Charnwood Day Nursery	0.3 mi
Children 1st Shepshed	0.7 mi
The Oak Treehouse	0.8 mi
Hind Leys PS	0.8 mi
Moors Farm Day Nursery	3.0 mi

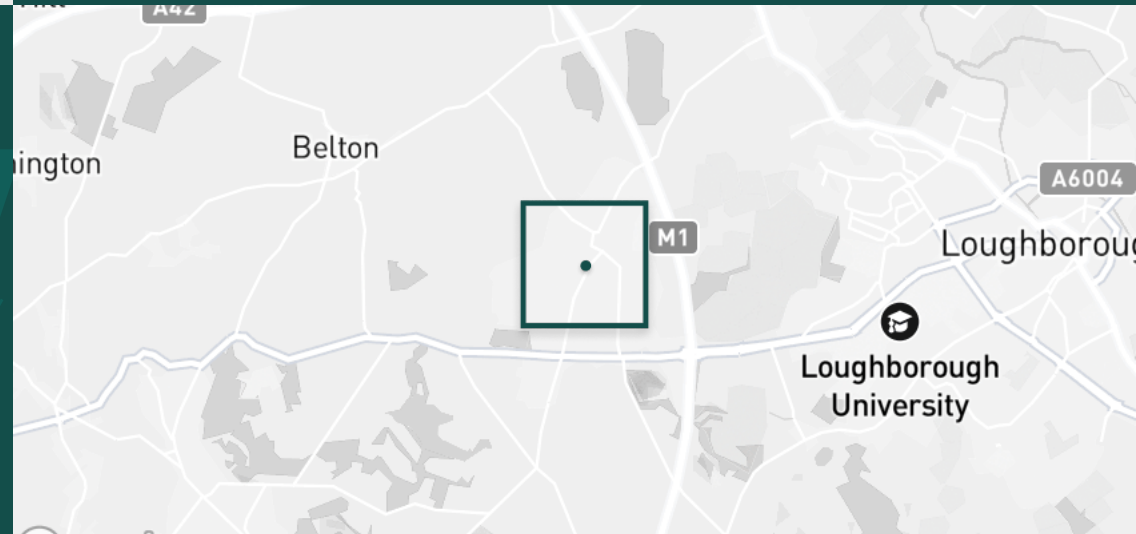
PRIMARY SCHOOLS

St Winefrides Catholic PS	0.5 mi
Oxley PS	0.6 mi
St Botolphs CE PS	0.9 mi
Newcroft PS	1.0 mi
Belton CE PS	3.2 mi

HIGH SCHOOLS

Hind Leys Community College	0.8 mi
Shepshed High Sch	0.9 mi
King Edward VII Science and Sports C	3.3 mi
Ashmount Sch	3.5 mi
De Lisle Catholic Science C	3.6 mi

Discover
Shepshed



- ✓ Four Bedrooms
- ✓ Three Washrooms
- ✓ Garage
- ✓ Available Soon
- ✓ Sizeable Kitchen
- ✓ Family Location





Lounge



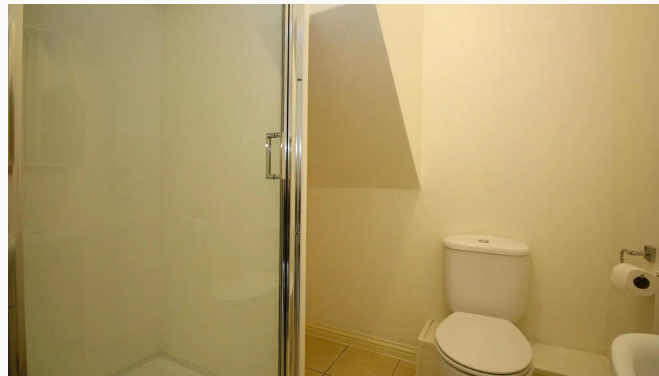
Lounge



Lounge



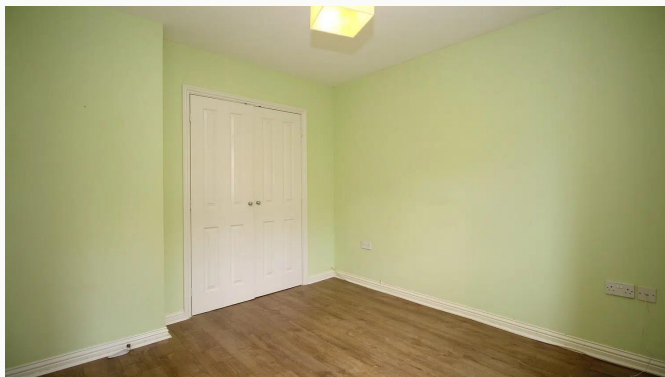
Utility Room



Shower Room



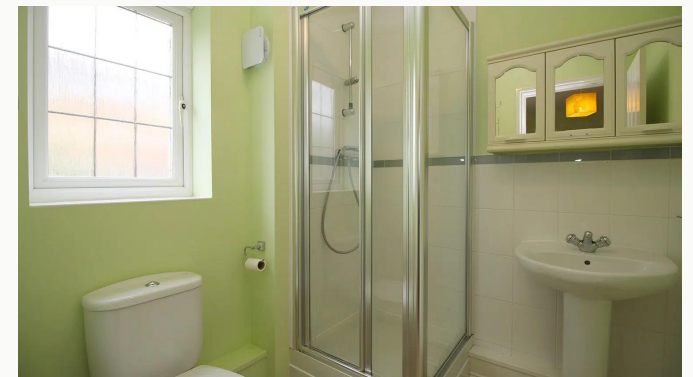
Master Bedroom



Master Bedroom



Master Bedroom



Ensuite



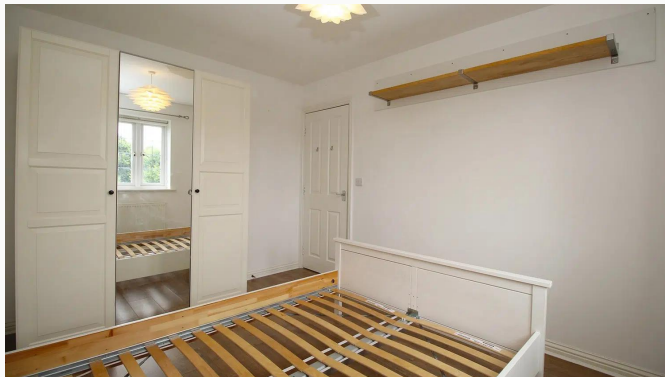
Bedroom Two



Bedroom Two



Bedroom Two



Bedroom Three



Bedroom Three



Bedroom Three



Spinners Way



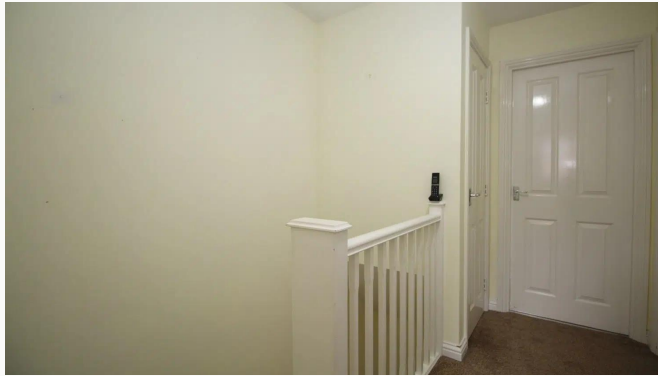
Bedroom Four



Bedroom Four



Bathroom



Landing



Landing



Hallway



Entrance



Garden



Garden



Parking



Parking

Available
From 23/12/2025

Comes
Unfurnished

Bedrooms
4

Receptions
1

Bathrooms
3

Parking
Garage

Postcode
LE12 9NY

Rent
£1,150 pcm

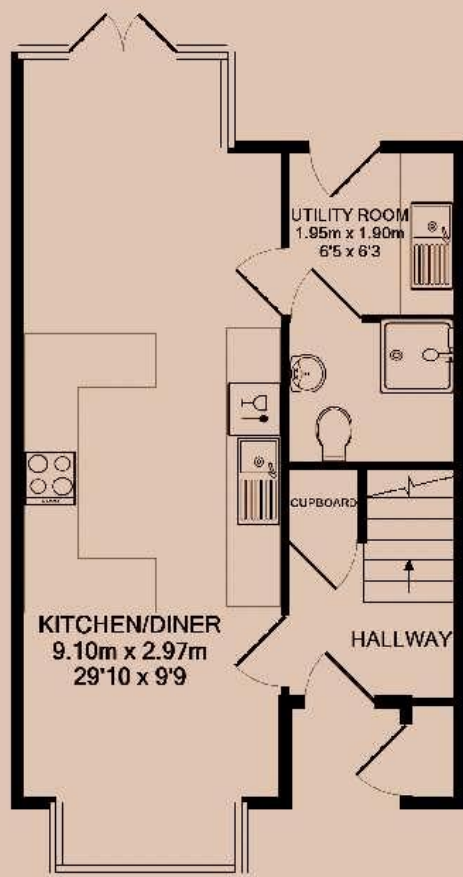
Deposit
£1,320

EPC
80 | C

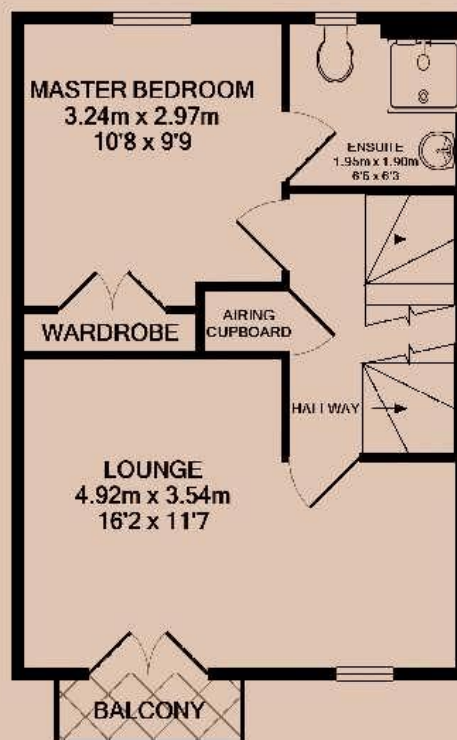
Council Tax Band
D

ID
#14482

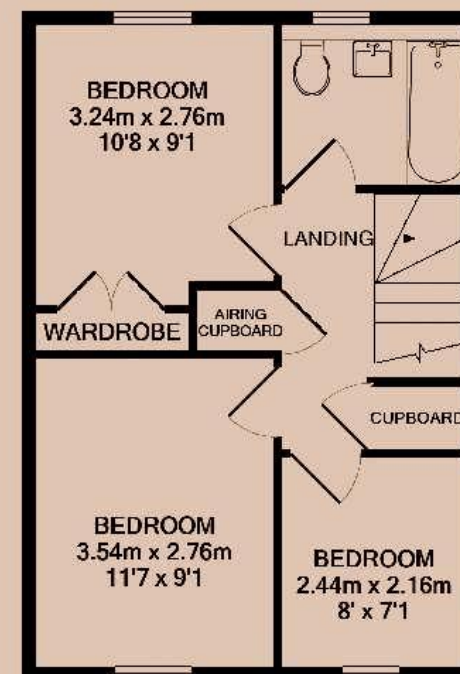
Updated
25/11/2025



GROUND FLOOR



1ST FLOOR



2ND FLOOR

Have a property like this? Let's work together.

Design and marketing are at the heart of our approach. With most people now looking for property online, we can get our clients' properties in front of as many people as the most prominent national agents. Where we differ is in the quality of our work. We create stunning digital particulars that highlight the individual attributes of every property we market, with videos and floor plans as standard.



OUR OFFICE
7 Biggin Street
Loughborough, LE11 1UA

CONTACT US
01509 320 320
let@huntleys.net

