

A modern, bright bedroom with a slanted ceiling. The room features a desk with a black office chair on the left, a bed with white linens in the center, and a wooden wardrobe on the right. A skylight provides natural light, and a circular light fixture is mounted on the ceiling. The room is clean and well-lit.

Forest Road

Loughborough

1 Bed Top Floor Room • LE11 3NR • £600 pcm • £690 Deposit



Forest Road, Loughborough

LARGE contemporary TOP floor double BEDROOM in a shared house with 50inch 4K smart TV and 500Mb SUPERFAST broadband. STYLISH fully equipped kitchen with high-grade APPLIANCES and kitchenware included, TWO washrooms, common room, maintained GARDEN. OPEN PLAN kitchen diner. Fully FURNISHED to a high standard. BILLS included. DRIVEWAY parking. Just a short WALK into town.

The Bedroom 5.9m (19'4) x 5.8m (19'0)

The bedroom available has only just been fitted out and comes fully furnished with bed with memory foam mattress, 50 inch 4K smart TV with Alexa built in. Includes all the furniture pictured including a wardrobe, bedside cabinet, desk with draws, chair, plenty of power points, large double-glazed Velux windows with integrated blackout blinds.

Common Room 4.3m (14'1) x 3.4m (11'2)

The social hub of the home with smart wood flooring, modern decor and large 50inch 4K smart TV with Virgin media package. Open plan to the Kitchen via a breakfast bar.

Kitchen 3.9m (12'10) x 2.4m (7'10)

Stunning kitchen complete with breakfast bar and stalls. Open plan to the common room. All the appliances and kitchenware you need are supplied including a dishwasher and two large fridge freezer. Access to the utility room.

Utility room 2.46m (8'1) x 2.02m (6'8)

With washing machine and separate tumble dryer. Provides access to both the shower room and the side of the house.

Bathroom 3.9m (12'10) x 2.5m (8'2)

Located on the first floor this three piece bathroom is supported by a further shower room. Includes bath with shower mixer, toilet and sink.

Shower room

Situated on the ground floor. Includes shower, toilet, sink and heated towel rail.

Garden

Communal rear garden with patio and lawn. All maintained by the landlord. Great for BBQs in the summer. NB: Due to be completed summer 2021.

Parking

Driveway parking for several cars. On street parking is also available with a permit.

For more information about this property, visit our website huntleys.net.

Energy Performance

Score	Energy rating	Current	Potential
92+	A		
81-91	B		
69-80	C		74 C
55-68	D	59 D	
39-54	E		
21-38	F		
1-20	G		

We aim to make our particulars both accurate and reliable. However they are not guaranteed; nor do they form part of an offer or contract. If you require clarification on any points then please contact us, especially if you are traveling some distance to view. All measurements are to widest point.



Bedroom



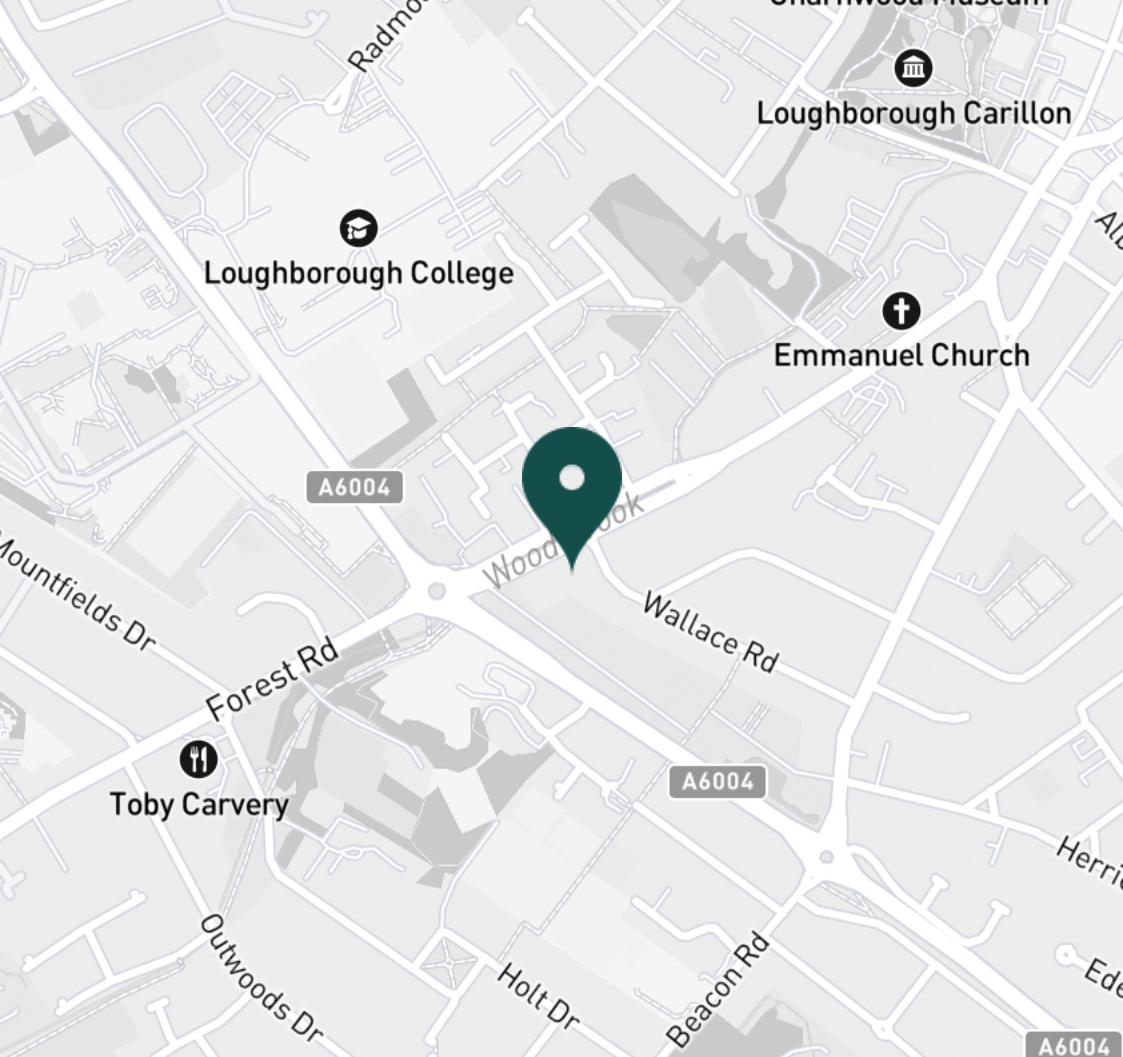
Bedroom



Bedroom



Forest Road



SUPERMARKETS

Tesco Extra Loughborough	0.9 mi
Co-op Food Knightthorpe Rd	1.2 mi
Sainsburys Loughborough	1.2 mi
Tesco Superstore Loughborough	1.2 mi
Marks & Spencer	1.4 mi

GYMS

Radmoor Centre	0.5 mi
Loughborough University Pool	0.6 mi
Loughborough Sport	0.7 mi
Fit4Less	0.8 mi
Dynamite Gym Ltd	0.9 mi

TRAIN STATIONS

Loughborough	1.8 mi
Barrow upon Soar	3.7 mi
Sileby	5.5 mi
Syston	10.5 mi
South Wigston	10.8 mi

NURSERY SCHOOLS

Emmanuel PS	0.4 mi
Parkside PS	0.6 mi
Loughborough Campus Nursery	0.8 mi
Little House Day Nursery	0.9 mi
Westwards Nursery	0.9 mi

PRIMARY SCHOOLS

Mountfields Lodge Sch	0.3 mi
Sacred Heart Catholic PS	0.5 mi
Our Lady's Convent Sch	0.9 mi
Beacon Primary Academy	1.0 mi
Loughborough CE PS	1.1 mi

HIGH SCHOOLS

Loughborough College	0.5 mi
Lboro Uni School Of The Arts	0.5 mi
Our Lady's Convent Sch	0.9 mi
RNIB College Loughborough	1.4 mi
The Garendon High Sch	1.4 mi

Discover
Loughborough





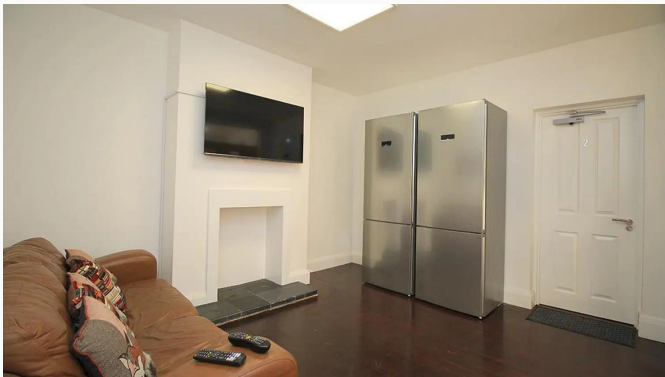
Living Area



Living Area



Living Area



Living Area



Living Area



Kitchen



Kitchen



Kitchen



Kitchen



Kitchen



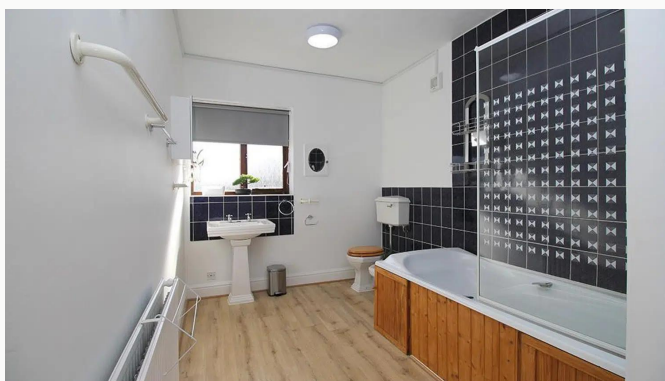
Utility Room



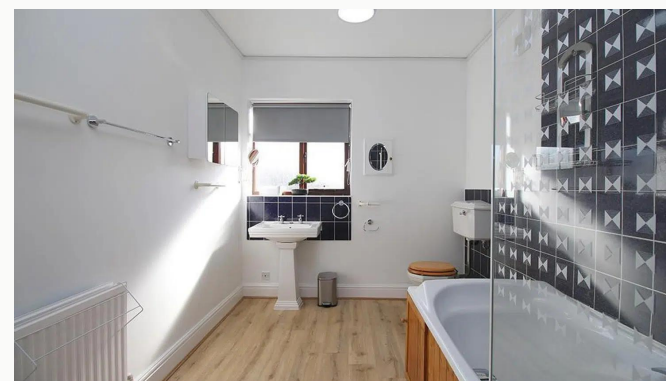
Utility Room



Downstairs Bathroom



Bathroom



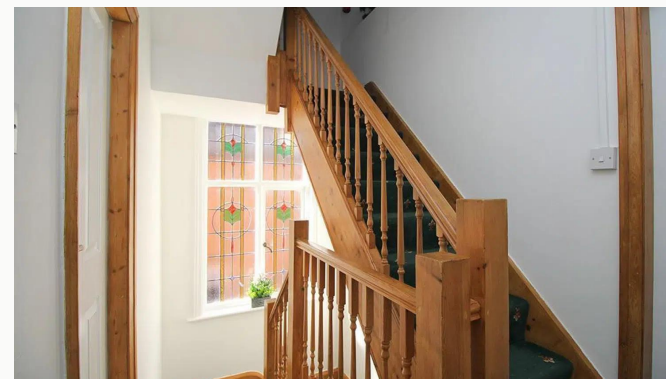
Bathroom



Bathroom



Bathroom



Landing



Landing



Cutlery



Kitchen

Available
From 03/06/2026

Comes
Furnished

Bedrooms
1

Receptions
1

Bathrooms
2

Parking
Driveway

Postcode
LE11 3NR

Rent
£600 pcm

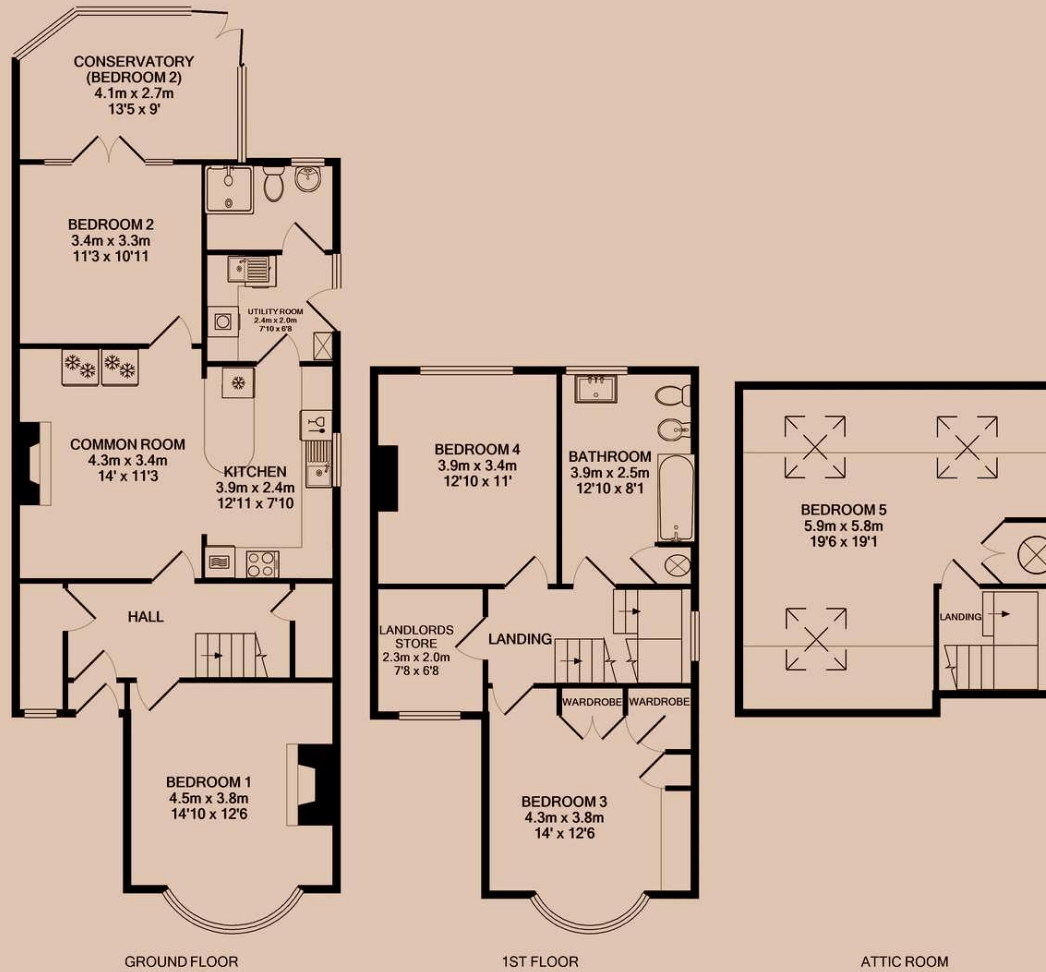
Deposit
£690

EPC
59 | D

Council Tax Band
D

ID
#5884

Updated
29/04/2026



Have a property like this? Let's work together.

Design and marketing are at the heart of our approach. With most people now looking for property online, we can get our clients' properties in front of as many people as the most prominent national agents. Where we differ is in the quality of our work. We create stunning digital particulars that highlight the individual attributes of every property we market, with videos and floor plans as standard.



OUR OFFICE
7 Biggin Street
Loughborough, LE11 1UA

CONTACT US
01509 320 320
let@huntleys.net

